



How to Choose a 500kWh Smart Photovoltaic Energy Storage Container





Overview

This manual is designed to guide you through the most significant considerations to bear in mind—technically, logistically, financially—when selecting a containerized solar unit that best meets your individual energy needs. What Is a Solar Containerized Energy Unit?

This manual is designed to guide you through the most significant considerations to bear in mind—technically, logistically, financially—when selecting a containerized solar unit that best meets your individual energy needs. What Is a Solar Containerized Energy Unit?

The Bluesun 40-foot BESS Container is a powerful energy storage solution featuring battery status monitoring, event logging, dynamic balancing, and advanced protection systems. It also includes automatic fire detection and alarm systems, ensuring safe and efficient energy management. The BESS.

The series of energy-type energy storage products adopts a lithium iron phosphate chemistry. It has high energy density and a long cycle life. The system design is highly integrated. The box structure is compact and the space utilization is high. It is easy to install using the rack with a flexible.

It features a three-level battery management system that ensures robust protection against overcharging, over-discharging, and over-voltage. The modular design enables easy expansion and front maintenance, while a built-in local monitoring EMS allows for remote oversight. Additionally, an optional.

But one of the most important factors in choosing the right solution is understanding BESS container size — and how it impacts performance, cost, and scalability. From small 20ft units powering factories and EV charging stations, to large 40ft containers stabilizing microgrids or utility loads, the.

Choosing a suitable solar containerized energy unit can be overwhelming—especially when you're weighing budget, location, load demands,



and long-term reliability. Whether you're powering a remote building, serving as a grid backup, or preparing for going off-grid, the containerized solar setup you.

Adding Containerized Battery Energy Storage System (BESS) to solar, wind, EV charger, and other renewable energy applications can reduce energy costs, minimize carbon footprint, and increase energy efficiency. Get ahead of the energy game with SCU! 50Kwh-2Mwh What is energy storage container?

SCU.



How to Choose a 500kWh Smart Photovoltaic Energy Storage Container



500KWh Container Lithium ESS

It can be used for utility scaled energy storage plants, wind turbine storage plants and commercial energy storage plants, and can also be used for small energy storage system, photovoltaic ...

[Request Quote](#)

[BESS 500kwh 1MWh Container Battery Energy Storage System](#)

It features a three-level battery management system that ensures robust protection against overcharging, over-discharging, and over-voltage. The modular design enables easy ...

[Request Quote](#)



[Industrial ESS 500kW/1000kWh - EnSmart Power](#)

Explore the typical application areas of energy storage and find out how you can use Ensmart Power energy storage systems to reduce your electricity costs and be energy ...

[Request Quote](#)

Foxtheon P500

FoxMind (TM) EMS is the intelligent core of the P500, transforming complex energy dispatch into simple solutions aligned with your business objectives. You don't need to be a power ...

[Request Quote](#)



[BESS Container 500KW 2MWH 40FT Energy Storage System ...](#)

The IP54-rated enclosure ensures dependable operation even in harsh environments. Consequently, with its robust features and exceptional scalability, the BESS Container 500kW ...

[Request Quote](#)



500kW Battery Energy Storage System

Each system is constructed in a environmentally controlled container including fire suppression. Each complete system offers users a hassle free 10+ year service life and hold internationally ...

[Request Quote](#)



Containerized Bess 500kwh 1MW 20FT 40FT Container Solar Storage ...

This scheme is applicable to the distribution system composed of photovoltaic, energy storage, power load and power grid (generator). The application of the system in the power grid mainly ...

[Request Quote](#)



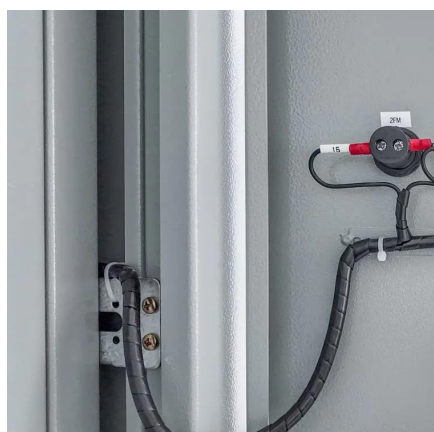
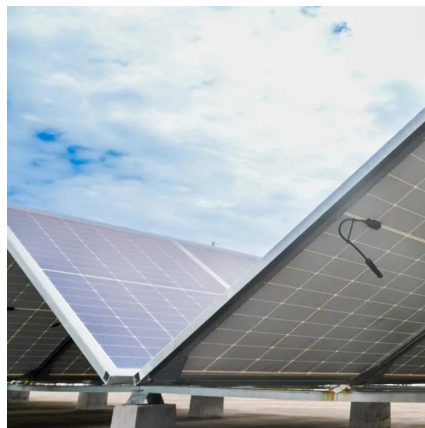
[BESS Container Sizes: How to Choose the](#)



[Right Capacity](#)

Not sure which BESS container size fits your project? Discover the differences between 20ft, 40ft, and modular systems--plus expert tips to help you choose the right ...

[Request Quote](#)



[Energy storage container, BESS container](#)

Adding Containerized Battery Energy Storage System (BESS) to solar, wind, EV charger, and other renewable energy applications can reduce energy costs, minimize carbon footprint, and ...

[Request Quote](#)

[How to Choose the Right Solar Containerized ...](#)

Learn how to choose the right solar containerized energy unit based on your energy needs, battery size, certifications, and deployment ...

[Request Quote](#)



[How to Choose the Right Solar Containerized Energy Unit](#)

Learn how to choose the right solar containerized energy unit based on your energy needs, battery size, certifications, and deployment conditions. A practical guide with ...

[Request Quote](#)

[BESS Container Sizes: How to Choose the](#)



[Right ...](#)

Not sure which BESS container size fits your project? Discover the differences between 20ft, 40ft, and modular systems--plus expert tips ...

[Request Quote](#)





Contact Us

For catalog requests, pricing, or partnerships, please visit:

<https://www.energyinnovationday.pl>

Phone: +48 22 335 1273

Email: info@energyinnovationday.pl

Scan the QR code to contact us via WhatsApp.

