



# How much power does a ground 5G base station consume





## Overview

---

How much power does a 5G base station use?

“A 5G base station is generally expected to consume roughly three times as much power as a 4G base station. And more 5G base stations are needed to cover the same area,” -IEEE Spectrum, 5G’s Waveform Is a Battery Vampire.

Are 5G base stations causing more energy consumption?

However, Li says 5G base stations are carrying five times the traffic as when equipped with only 4G, pushing up power consumption. The carrier is seeking subsidies from the Chinese government to help with the increased energy usage.

Does China Mobile have a 5G base station?

China Mobile has tried using lower cost deployments of MIMO antennas, specifically 32T32R and sometimes 8T8R rather than 64T64R, according to MTN. However, Li says 5G base stations are carrying five times the traffic as when equipped with only 4G, pushing up power consumption.

How much electricity does 5G use?

To achieve gigabit speeds, the plan with 5G is to have it operate at very high frequencies of 24-26 Gigahertz. For this reason, 5G requires millions of new so-called “small cells,” for example, transmitters in lampposts. Billions of new wireless devices will soon be available worldwide. All of the above consumes electricity.



## How much power does a ground 5G base station consume



### Why does 5g base station consume so much power and how to ...

In addition to other small modules that use electricity, the power consumption of a single 5G base station is generally around 3700 watts, which is about three times that of 4G ...

[Request Quote](#)

### How much power does 5G consume?

One 5G base station is estimated to consume about as much power as 73 households (6), and 3x as much as the previous generation of base stations (5), (7). When base stations, data centers ...

[Request Quote](#)



### Optimal energy-saving operation strategy of 5G base station with

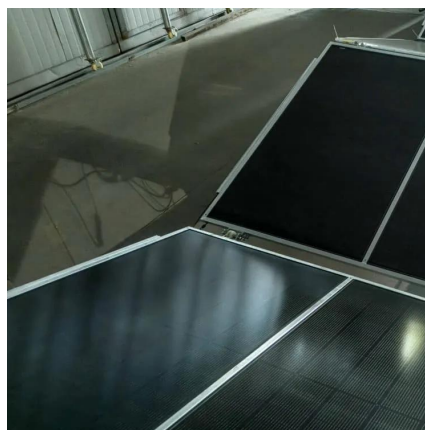
Under full-load conditions, the power consumption of 5 G base stations is approximately 3-4 times that of 4 G base stations, which has a notable impact on energy ...

[Request Quote](#)

### Base station 5G power consumption

The power consumption of a single 5G station is 2.5 to 3.5 times higher than that of a single 4G station. The main factor behind this increase in 5G power consumption is the high power ...

[Request Quote](#)



### [How Much Power Does 5G Base Station Consume? , Huijue ...](#)

The average 5G base station consumes 2.5-4 kW daily - equivalent to powering 40 refrigerators simultaneously. Three factors amplify this: Operators now spend 20-40% of ...

[Request Quote](#)

### [Power Consumption: 5G Basestations Are Hungry, Hungry Hippos](#)

The increased power consumption of next-generation basestations may be one of the dirty little secrets of 5G, which might not be a secret much longer as operators roll out ...

[Request Quote](#)



### [A technical look at 5G energy consumption and performance](#)

In addition to other small modules that use electricity, the power consumption of a single 5G base station is generally around 3700 watts, ...

[Request Quote](#)



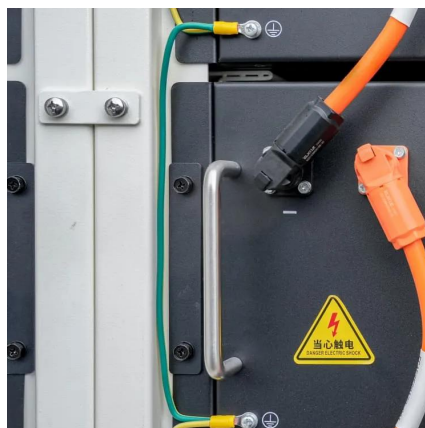
**5G base stations use a lot more**



## energy than 4G base stations: MTN

A typical 5G base station consumes up to twice or more the power of a 4G base station, writes MTN Consulting Chief Analyst Matt Walker in a new report entitled " Operators ...

[Request Quote](#)



## 5G base stations use a lot more energy than 4G ...

A typical 5G base station consumes up to twice or more the power of a 4G base station, writes MTN Consulting Chief Analyst Matt ...

[Request Quote](#)

## How much power does 5G consume?

One 5G base station is estimated to consume about as much power as 73 households (6), and 3x as much as the previous generation of base ...

[Request Quote](#)



## What is 5G Energy Consumption?

With 5G projected to increase capacity up to approximately 1000-fold and high frequency millimeter wave (mmWave) transmission driving exponentially higher cell density, this ...

[Request Quote](#)

## Energy Consumption of 5G, Wireless



## Systems and ...

"A 5G base station is generally expected to consume roughly three times as much power as a 4G base station. And more 5G base stations are ...

[Request Quote](#)



## A technical look at 5G energy consumption and performance

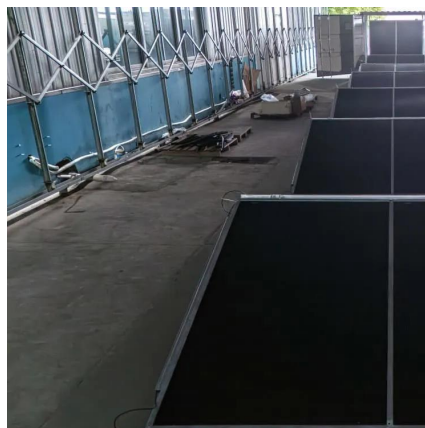
To understand this, we need to look closer at the base station power consumption characteristics (Figure 3). The model shows that there is significant energy consumption in the ...

[Request Quote](#)

## **Energy Consumption of 5G, Wireless Systems and the Digital ...**

"A 5G base station is generally expected to consume roughly three times as much power as a 4G base station. And more 5G base stations are needed to cover the same area," -IEEE ...

[Request Quote](#)





## Contact Us

---

For catalog requests, pricing, or partnerships, please visit:

<https://www.energyinnovationday.pl>

Phone: +48 22 335 1273

Email: [info@energyinnovationday.pl](mailto:info@energyinnovationday.pl)

Scan the QR code to contact us via WhatsApp.

