



How much power does a 5G base station use





How much power does a 5G base station use



Energy Consumption of 5G, Wireless Systems and the Digital ...

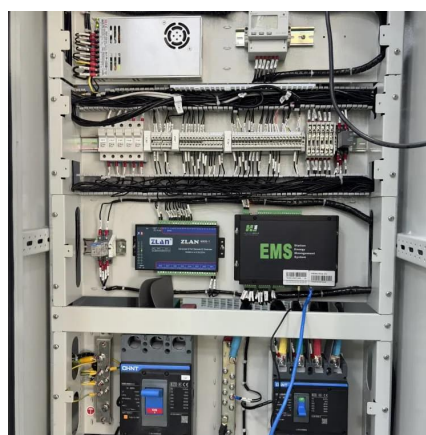
"A 5G base station is generally expected to consume roughly three times as much power as a 4G base station. And more 5G base stations are needed to cover the same area," -IEEE ...

[Request Quote](#)

5G base stations use a lot more energy than 4G base stations: MTN

A typical 5G base station consumes up to twice or more the power of a 4G base station, writes MTN Consulting Chief Analyst Matt Walker in a new report entitled " Operators ...

[Request Quote](#)



Energy Consumption of 5G, Wireless Systems and ...

"A 5G base station is generally expected to consume roughly three times as much power as a 4G base station. And more 5G base stations are ...

[Request Quote](#)



Why does 5g base station consume so much power and how to ...

In addition to other small modules that use electricity, the power consumption of a single 5G base station is generally around 3700 watts, which is about three times that of 4G ...



[Request Quote](#)



[5G base stations use a lot more energy than 4G ...](#)

A typical 5G base station consumes up to twice or more the power of a 4G base station, writes MTN Consulting Chief Analyst Matt ...

[Request Quote](#)

How much power does 5G consume?

One 5G base station is estimated to consume about as much power as 73 households (6), and 3x as much as the previous generation of base stations (5), (7). When base stations, data centers ...

[Request Quote](#)



[A technical look at 5G energy consumption and performance](#)

Base Station Power Consumption
Energy Saving Features of 5G New Radio
How Much Energy Can We Save with Nr Sleep Modes?
Impact on Energy Efficiency and Performance in A Super Dense Urban Scenario
Further Reading
The 5G NR standard has been designed based on the knowledge of the typical traffic activity in radio networks as well as the need to support sleep states in radio network equipment. By putting the base station into a sleep state when there is no traffic to serve i.e. switching off hardware

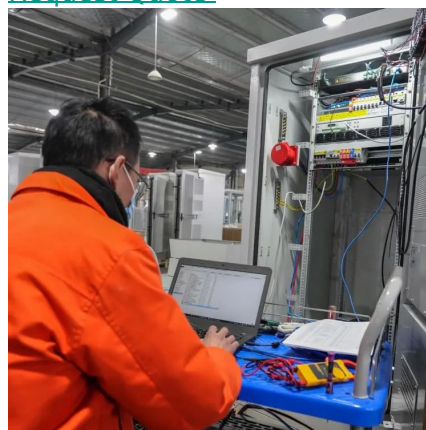


components, it will consume less energy. The more component See more on ericsson Missing: base stationMust include: base stationHuawei

5G Power: Creating a green grid that slashes costs, emissions

In the 5G era, the maximum energy consumption of a 64T64R active antenna unit (AAU) will be an estimated 1 to 1.4 kW to 2 kW for a baseband unit (BBU). Base stations with multiple ...

[Request Quote](#)



Base station 5G power consumption

The power consumption of a single 5G station is 2.5 to 3.5 times higher than that of a single 4G station. The main factor behind this increase in 5G power consumption is the high power ...

[Request Quote](#)



Power Consumption: 5G Basestations Are Hungry, Hungry Hippos

5G basestations are pushing up power requirements by three times, as MIMO and more digital circuitry require more power.

[Request Quote](#)

How much power does 5G consume?

One 5G base station is estimated to consume about as much power as 73 households (6), and 3x as much as the previous generation of base ...

[Request Quote](#)





5G Power: Creating a green grid that slashes costs, emissions & energy use

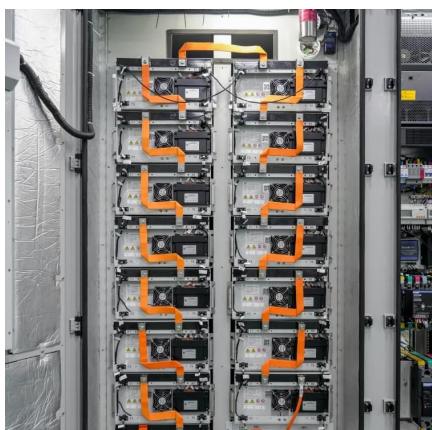
In the 5G era, the maximum energy consumption of a 64T64R active antenna unit (AAU) will be an estimated 1 to 1.4 kW to 2 kW for a baseband unit (BBU). Base stations with multiple ...

[Request Quote](#)

[A technical look at 5G energy consumption and performance](#)

To understand this, we need to look closer at the base station power consumption characteristics (Figure 3). The model shows that there is significant energy consumption in the ...

[Request Quote](#)



[How Much Power Does 5G Base Station Consume? , Huijue ...](#)

The average 5G base station consumes 2.5-4 kW daily - equivalent to powering 40 refrigerators simultaneously. Three factors amplify this: Operators now spend 20-40% of ...

[Request Quote](#)

What is 5G Energy Consumption?

Learn how much power 5G networks consume and understand how you can reduce RAN energy use. Does Open Ran Save Energy? The Information and Communication Technology (ICT) ...

[Request Quote](#)



[Why does 5g base station consume so](#)



[much ...](#)

In addition to other small modules that use electricity, the power consumption of a single 5G base station is generally around 3700 watts, ...

[Request Quote](#)



Contact Us

For catalog requests, pricing, or partnerships, please visit:

<https://www.energyinnovationday.pl>

Phone: +48 22 335 1273

Email: info@energyinnovationday.pl

Scan the QR code to contact us via WhatsApp.

