



How much power does a 5G base station have





Overview

How much power does a 5G base station consume?

That's almost a threefold increase compared to 4G (5). One 5G base station is estimated to consume about as much power as 73 households (6), and 3x as much as the previous generation of base stations (5), (7).

Are 5G base stations causing more energy consumption?

However, Li says 5G base stations are carrying five times the traffic as when equipped with only 4G, pushing up power consumption. The carrier is seeking subsidies from the Chinese government to help with the increased energy usage.

How much power will a 5G base station use in 2025?

The Small Cell Forum predicts the installed base of small cells to reach 70.2 million in 2025 and the total installed base of 5G or multimode small cells in 2025 to be 13.1 million. "A 5G base station is generally expected to consume roughly three times as much power as a 4G base station.

Does China Mobile have a 5G base station?

China Mobile has tried using lower cost deployments of MIMO antennas, specifically 32T32R and sometimes 8T8R rather than 64T64R, according to MTN. However, Li says 5G base stations are carrying five times the traffic as when equipped with only 4G, pushing up power consumption.



How much power does a 5G base station have



[5G power consumption is 2.5 to 3 times of 4G](#)

The power consumption of a 5G single station is 2.5 to 3.5 times that of a 4G single station due to AAU power consumption, the current full load power of a single station is nearly ...

[Request Quote](#)

[A technical look at 5G energy consumption and performance](#)

To understand this, we need to look closer at the base station power consumption characteristics (Figure 3). The model shows that there is significant energy consumption in the ...

[Request Quote](#)



Optimal energy-saving operation strategy of 5G base station with

Under full-load conditions, the power consumption of 5 G base stations is approximately 3-4 times that of 4 G base stations, which has a notable impact on energy ...

[Request Quote](#)

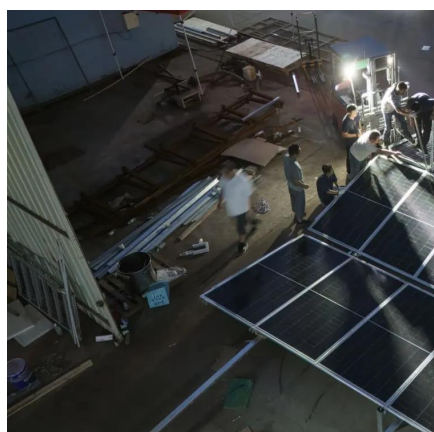


5G base stations use a lot more energy than 4G base stations: MTN

A typical 5G base station consumes up to twice or more the power of a 4G base station, writes MTN Consulting Chief Analyst Matt Walker in a new report entitled " Operators ...



[Request Quote](#)



What is 5G Energy Consumption?

With 5G projected to increase capacity up to approximately 1000-fold and high frequency millimeter wave (mmWave) transmission driving exponentially higher cell density, this ...

[Request Quote](#)

How much power does 5G consume?

One 5G base station is estimated to consume about as much power as 73 households (6), and 3x as much as the previous generation of base ...

[Request Quote](#)



How much power does 5G consume?

One 5G base station is estimated to consume about as much power as 73 households (6), and 3x as much as the previous generation of base stations (5), (7). When base stations, data centers ...

[Request Quote](#)

[Energy Consumption of 5G, Wireless](#)



[Systems and ...](#)

"A 5G base station is generally expected to consume roughly three times as much power as a 4G base station. And more 5G base stations are ...

[Request Quote](#)



[Power Consumption: 5G Basestations Are Hungry, Hungry Hippos](#)

The increased power consumption of next-generation basestations may be one of the dirty little secrets of 5G, which might not be a secret much longer as operators roll out ...

[Request Quote](#)

[5g base station power supply and energy storage](#)

The 5G base station battery is a key component that provides backup power for base station equipment in the 5G communication network, ensuring that the base station can continue to ...

[Request Quote](#)



[5G base stations use a lot more energy than 4G ...](#)

A typical 5G base station consumes up to twice or more the power of a 4G base station, writes MTN Consulting Chief Analyst Matt ...

[Request Quote](#)

[A technical look at 5G energy](#)



[consumption and performance](#)

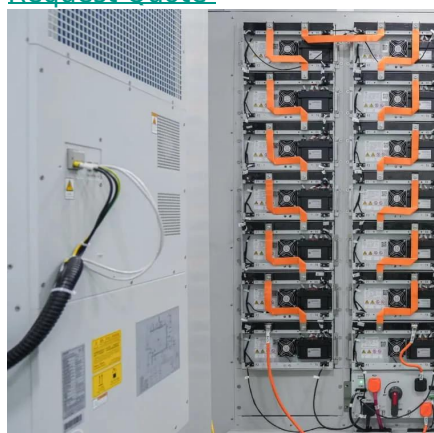
Base Station Power Consumption
Energy Saving Features of 5G New Radio
How Much Energy Can We Save with Nr Sleep Modes?
Impact on Energy Efficiency and Performance in A Super Dense Urban Scenario
Further Reading
Today we see that a major part of energy consumption in mobile networks comes from the radio base station sites and that the consumption is stable. We can also see that even in densely deployed networks, as in city centers, the network traffic load can fluctuate very much during the day, with significant periods of almost no traffic in the base sta
See more on [ericsson eastcoastpower \[PDF\]](#)



5g base station power supply and energy storage

The 5G base station battery is a key component that provides backup power for base station equipment in the 5G communication network, ensuring that the base station can continue to ...

[Request Quote](#)



Energy Consumption of 5G, Wireless Systems and the Digital ...

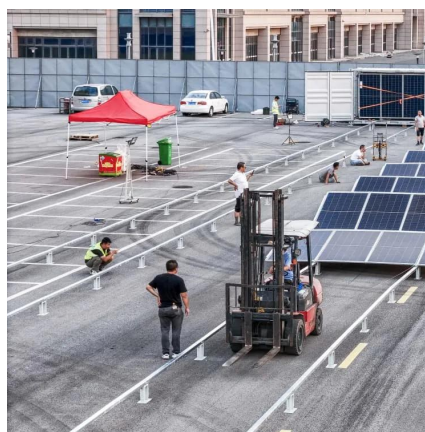
"A 5G base station is generally expected to consume roughly three times as much power as a 4G base station. And more 5G base stations are needed to cover the same area," -IEEE ...

[Request Quote](#)

[How Much Power Does 5G Base Station Consume? , Huijue ...](#)

Have you ever wondered how much energy our hyper-connected world is consuming? 5G base stations, the backbone of next-gen connectivity, now draw 3-4 times ...

[Request Quote](#)





Contact Us

For catalog requests, pricing, or partnerships, please visit:

<https://www.energyinnovationday.pl>

Phone: +48 22 335 1273

Email: info@energyinnovationday.pl

Scan the QR code to contact us via WhatsApp.

