



How much load can a 4mw energy storage power station carry





Overview

How many tons can the energy storage power station bear?

To understand how many tons an energy storage power station can bear, it's essential to consider several factors. 1. Capacity limitations, 2. Material strengths, 3. Design specifications, 4.

How many tons can the energy storage power station bear?

To understand how many tons an energy storage power station can bear, it's essential to consider several factors. 1. Capacity limitations, 2. Material strengths, 3. Design specifications, 4.

How many tons can the energy storage power station bear?

To understand how many tons an energy storage power station can bear, it's essential to consider several factors. 1. Capacity limitations, 2. Material strengths, 3. Design specifications, 4. Load distribution. Of particular importance is the.

The key quantities you need to know are as follows: Power capacity or power rating: The maximum amount of power that a battery can instantaneously produce on a continuing basis. It can be compared to the nameplate rating of a power plant. Power capacity or rating is measured in megawatts (MW) for.

For example, combining a battery with a solar power can help bridge the energy supply gap between sunset and the time when the load begins to decrease. Why Now for Battery Storage?

Compact footprint; 80% round trip efficiency; can cycle daily; life?

Lithium Iron Phosphate batteries, commonly used.

Battery storage power stations store electrical energy in various types of batteries such as lithium-ion, lead-acid, and flow cell batteries. These facilities require efficient operation and management functions, including data collection capabilities, system control, and management capabilities.



Energy capacity is the total amount of electricity that a BESS container can store and later discharge. It is measured in kilowatt-hours (kWh) or megawatt-hours (MWh). This value reflects how long the system can provide energy at a certain power level before needing to recharge. For example, a 2.

Energy from fossil or nuclear power plants and renewable sources is stored for use by customers. Grid energy storage, also known as large-scale energy storage, is a set of technologies connected to the electrical power grid that store energy for later use. These systems help balance supply and demand. What is energy storage capacity?

Energy storage capacity is measured in megawatt-hours (MWh) or kilowatt-hours (kWh). Duration: The length of time that a battery can be discharged at its power rating until the battery must be recharged. The three quantities are related as follows: $\text{Duration} = \text{Energy Storage Capacity} / \text{Power Rating}$.

What are battery storage power stations?

Battery storage power stations are usually composed of batteries, power conversion systems (inverters), control systems and monitoring equipment. There are a variety of battery types used, including lithium-ion, lead-acid, flow cell batteries, and others, depending on factors such as energy density, cycle life, and cost.

How many kWh should a storage system have?

Individual energy storage system units shall have a maximum rating of 20 kWh. The aggregate rating shall not exceed: 1. 40 kWh within utility closets and storage or utility spaces 2. 80 kWh in attached or detached garages and detached accessory structures 3. 80 kWh on exterior walls 4. 80 kWh outdoors on the ground R327.6 Electrical installation.

What are the minimum requirements for battery energy storage systems?

The following permits are the minimum requirements for battery energy storage systems installed with an aggregate energy capacity less than or equal to 600kWh and, if in a room or indoor area, where only a single energy storage system technology is provided. 1. Battery Energy Storage System Permit 2.



How much load can a 4mw energy storage power station carry



[Measuring Battery Electric Storage System ...](#)

Energy storage capacity: The amount of energy that can be discharged by the battery before it must be recharged. It can be compared to the output ...

[Request Quote](#)

Grid energy storage

Grid energy storage, also known as large-scale energy storage, is a set of technologies connected to the electrical power grid that store energy for ...

[Request Quote](#)



[How many tons can the energy storage power station bear?](#)

Hence, understanding the intricate interplay between these factors is pivotal in assessing how many tons an energy storage power station can safely bear. In contrast, ...

[Request Quote](#)



[Battery storage power station - a comprehensive guide](#)

The guide covers the construction, operation, management, and functionalities of these power stations, including their contribution to grid stability, peak shaving, load shifting, ...



[Request Quote](#)



[Measuring Battery Electric Storage System Capabilities](#)

Energy storage capacity: The amount of energy that can be discharged by the battery before it must be recharged. It can be compared to the output of a power plant. Energy storage ...

[Request Quote](#)



[Electricity storage: Location, location, location ...](#)

The examples above and below illustrate the wide range of storage applications, though neither is intended to provide a ...

[Request Quote](#)



Understanding the Energy Capacity and Applications of BESS ...

Energy capacity is the total amount of electricity that a BESS container can store and later discharge. It is measured in kilowatt-hours (kWh) or megawatt-hours (MWh). This ...

[Request Quote](#)



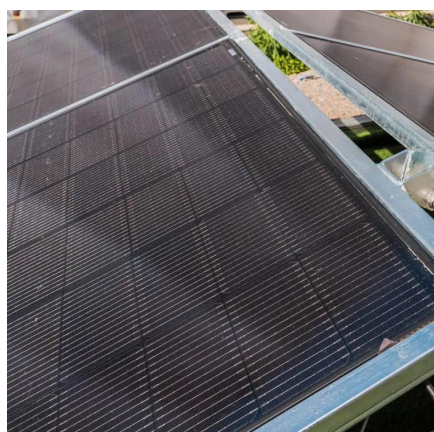
Understanding Power Storage



Installed Capacity: Key Factors, ...

Let's start with the basics: power storage installed capacity refers to the maximum amount of electricity a system can store and discharge. Think of it as the "gas tank size" for ...

[Request Quote](#)



[Energy storage power station storage capacity requirements](#)

The capacity of a storage station reflects the total amount of energy it can hold, while the storage duration determines how long that energy can be supplied during demand

[Request Quote](#)

[What is Utility Scale Battery Storage?](#)

Utility-scale battery storage systems differ from Uninterruptible Power Systems (UPS) because they do not yet provide no-blink power. These ratings reflect a combination of the actual ...

[Request Quote](#)



Grid energy storage

Grid energy storage, also known as large-scale energy storage, is a set of technologies connected to the electrical power grid that store energy for later use. These systems help ...

[Request Quote](#)

[How many tons can the energy storage](#)



[power ...](#)

Hence, understanding the intricate interplay between these factors is pivotal in assessing how many tons an energy storage power ...

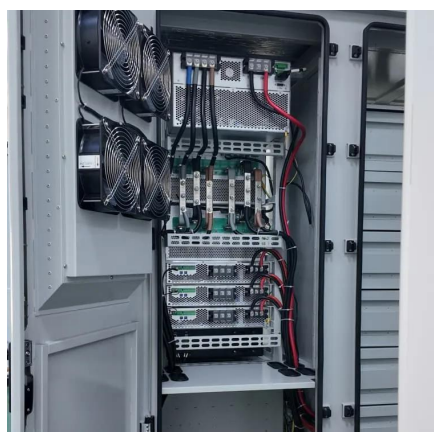
[Request Quote](#)



[Battery storage power station - a comprehensive guide](#)

The guide covers the construction, operation, management, and functionalities of these power stations, including their contribution to grid stability, peak shaving, load shifting, and backup ...

[Request Quote](#)



Electricity storage: Location, location, location ... and cost

The examples above and below illustrate the wide range of storage applications, though neither is intended to provide a comprehensive listing of storage technologies. Some ...

[Request Quote](#)



[New York Battery Energy Storage System Guidebook for ...](#)

As an important first step in protecting public and firefighter safety while promoting safe energy storage, the New York State Energy Research and Development Authority (NYSERDA) ...

[Request Quote](#)





Contact Us

For catalog requests, pricing, or partnerships, please visit:

<https://www.energyinnovationday.pl>

Phone: +48 22 335 1273

Email: info@energyinnovationday.pl

Scan the QR code to contact us via WhatsApp.

