



# How much is the solar panel current per square meter





## Overview

---

For 1m<sup>2</sup> of modern photovoltaic panels, you're looking at a daily output ranging from 0.3 kWh to 1.5 kWh. But why such a wide range?

Stick with me - this solar story has more twists than a photovoltaic cell's electron dance.

For 1m<sup>2</sup> of modern photovoltaic panels, you're looking at a daily output ranging from 0.3 kWh to 1.5 kWh. But why such a wide range?

Stick with me - this solar story has more twists than a photovoltaic cell's electron dance.

Estimate your solar energy production per m<sup>2</sup> with accurate calculations for any location. Free calculator with multiple units, efficiency modes, and detailed visualizations. This calculator provides estimates only and should not be used as the sole basis for solar system purchases or financial.

Solar panels have become a cornerstone of renewable energy, but many wonder: How much power can a single square meter of solar panels actually produce?

Let's break down the science behind photovoltaic efficiency. Under optimal conditions (5 peak sun hours): At noon under direct sunlight: \*Note: 1m<sup>2</sup>.

This article explores solar energy per square meter and the various factors that influence energy output, such as location, climate, and panel efficiency. It provides crucial calculations, compares energy production across regions, and offers strategies to maximize solar energy generation. Explore.

On a clear day, each square metre of the Earth's surface receives approximately 1,000 watts of solar energy, also known as 1 kW/m<sup>2</sup>. This energy can be converted into electricity using solar panels, making it a reliable and sustainable source of power for homes and businesses. However, not all of.

Estimates the energy production of grid-connected photovoltaic (PV) energy systems throughout the world. It allows homeowners, small building owners, installers and manufacturers to easily develop estimates of the performance of



potential PV installations. Operated by the Alliance for Sustainable.

To measure this efficiency, use solar panel Watts per square meter (W/m). This metric shows how much power a solar panel produces per square meter of surface area under standard conditions. By knowing W/m, you can: Install solar panels and maximize your energy output! What is Solar Panel.



## How much is the solar panel current per square meter



### [How many watts per square meter is a solar ...](#)

Each type of solar panel has its unique efficiency and wattage output per square meter, which impacts their suitability for different ...

[Request Quote](#)

### [How Much Electricity Can 1 Square Meter of Solar Panels ...](#)

Here's the kicker: A 150W panel under ideal Arizona sun (6 peak hours) would theoretically generate 0.9 kWh. But in cloudy London? Maybe 0.3 kWh. It's like comparing a desert cactus ...

[Request Quote](#)



### **Solar Panel Output Per Square Meter**

Discover how much electricity solar panels generate per square meter, explore efficiency factors, technology comparisons, and future innovations in photovoltaic energy.

[Request Quote](#)

### **How many watts per square meter is a solar panel? , NenPower**

Each type of solar panel has its unique efficiency and wattage output per square meter, which impacts their suitability for different settings. Crystalline silicon panels are among ...



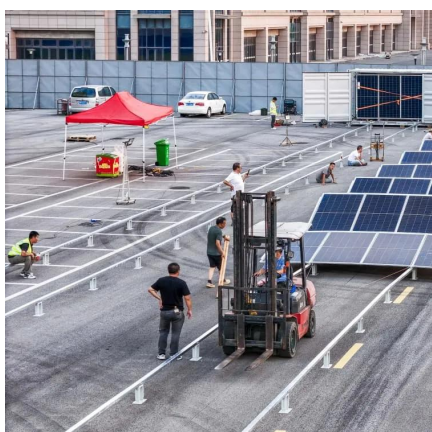
[Request Quote](#)



### [Solar Panel Wattage Calculation: How To Calculate In 2025?](#)

These standardized conditions include 1,000 watts per square meter of solar irradiance, 25°C cell temperature, and air mass of 1.5. The basic solar panel wattage formula is:  $Wattage = Voltage \times Current$

[Request Quote](#)



### **PVWatts Calculator**

NREL's PVWatts® Calculator Estimates the energy production of grid-connected photovoltaic (PV) energy systems throughout the world. It allows homeowners, small building owners, ...

[Request Quote](#)



### [Solar Panel Watts Per Square Meter Explained](#)

Solar panel watts per square meter (W/m) measures the power output of a solar panel based on its size. Compare solar panels to see which generates most electricity per square meter.

[Request Quote](#)



### [Solar Energy Per Square Meter: How Much](#)



## [Power Can You Get?](#)

The average solar energy received per square meter varies widely across regions, influenced primarily by local sunlight exposure and climate conditions. Energy planners must ...

[Request Quote](#)



## [Solar Energy Generation Per Square Metre: A Complete Guide](#)

How much electricity can solar panels generate per square metre? Most solar panels generate 150-220 watts per square metre, depending on efficiency and conditions.

[Request Quote](#)

## [Solar Power Per Square Meter Calculator](#)

Calculate solar panel energy output per square meter. Get accurate daily, monthly, and annual production estimates based on location, panel specs, and system losses.

[Request Quote](#)



## [Solar Energy Generation Per Square Metre: A ...](#)

How much electricity can solar panels generate per square metre? Most solar panels generate 150-220 watts per square metre, ...

[Request Quote](#)

## [Solar Power per Square Meter Calculator](#)



Factors to Consider for Solar Panel Output Per Square Meter. Region: If you are living in countries near to poles, you will receive less sunlight. In comparison to the people ...

[Request Quote](#)



## Solar Panel Output Per Square Meter

Discover how much electricity solar panels generate per square meter, explore efficiency factors, technology comparisons, and ...

[Request Quote](#)



## Contact Us

---

For catalog requests, pricing, or partnerships, please visit:

<https://www.energyinnovationday.pl>

Phone: +48 22 335 1273

Email: [info@energyinnovationday.pl](mailto:info@energyinnovationday.pl)

Scan the QR code to contact us via WhatsApp.

