



How much electricity does the base station wind power source consume





Overview

The data suggest that the turbine consumes at a minimum rate of about 50 kW, or 8.3% of its reported production over those years (which declined 2-4% each year). There is also the matter of reactive power (VAR).

The data suggest that the turbine consumes at a minimum rate of about 50 kW, or 8.3% of its reported production over those years (which declined 2-4% each year). There is also the matter of reactive power (VAR).

Other electricity plants generally use their own electricity, and the difference between the amount they generate and the amount delivered to the grid is readily determined. Wind plants, however, use electricity from the grid, which does not appear to be accounted for in their output figures. At.

Large wind turbines require a large amount of energy to operate. Other electricity plants generally use their own electricity, and the difference between the amount they generate and the amount delivered to the grid is readily determined. Wind plants, however, use electricity from the grid, which.

U. S. wind turbines produce about 434 billion kilowatts (kWh) of electricity a year, with an average of 26 kWh of energy needed to power an entire home for a day. Wind is the third largest source of electricity in the United States, with 40 turbines. The amount of energy a wind turbine can produce.

A single onshore wind turbine that can handle 2-3 megawatts pumps out about 6 million kilowatt hours (kWh) of electricity each year. This much power keeps roughly 1,500 average homes running [-3] [-4]. GE's huge Haliade-X 13 MW offshore turbine shows even more impressive numbers - one spin of its.

In December 2025, the Energy Markets team published Patterns & Trends - New York State Energy Profiles 2009-2023, a compilation of energy statistics and data on energy consumption, supply sources, prices, and expenditure information for New York State. To download a full copy of the report, and.

Today nearly 84,000 onshore wind turbines across the country are generating clean, reliable power. Wind power capacity totals over 155 GW, making it the fourth-largest source of electricity generation capacity in the country. This is



enough wind power to serve the equivalent of nearly 50 million.



How much electricity does the base station wind power source consume



[Wind Power Facts and Information , ACP , ACP](#)

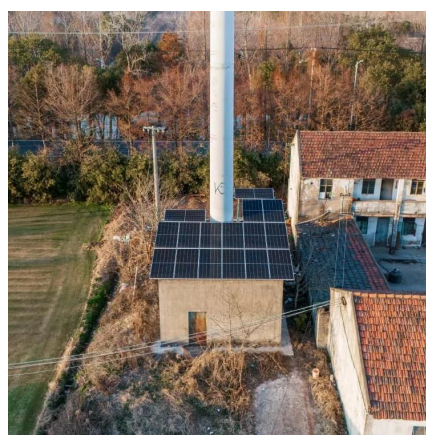
Wind's cost has declined more than 30% from 2015 to 2024, with improved technology and U.S.-based manufacturing making it competitive with other energy sources and the cheapest ...

[Request Quote](#)

How Much Electricity Does a Wind Turbine Produce? Daily and ...

Learn how much electricity wind turbines generate, what affects their output, and how hybrid systems boost renewable energy performance.

[Request Quote](#)



[Energy consumption in wind facilities](#)

Large wind turbines require a large amount of energy to operate. Other electricity plants generally use their own electricity, and the difference between the amount they generate and the ...

[Request Quote](#)



[How Much Energy Does a Wind Turbine Produce?](#)

U.S. wind turbines produce about 434 billion kilowatts (kWh) of electricity a year, and it only takes an average of 26 kWh of ...

[Request Quote](#)



[Wind Power Facts and Information , ACP , ACP](#)

Wind's cost has declined more than 30% from 2015 to 2024, with improved technology and U.S.-based manufacturing making it competitive with ...

[Request Quote](#)



Patterns and Trends

The dashboard currently covers consumption, pricing data, and expenditure datasets of the New York State energy system. Primary energy consumption, electric generation, net energy ...

[Request Quote](#)



Wind power

Wind power is thus proportional to the third power of the wind speed; the available power increases eightfold when the wind speed doubles. Change of wind speed by a factor of 2.1544 ...

[Request Quote](#)

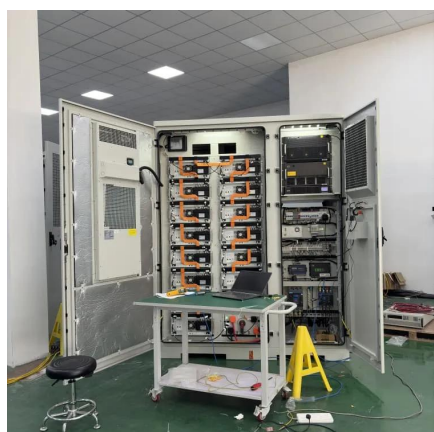
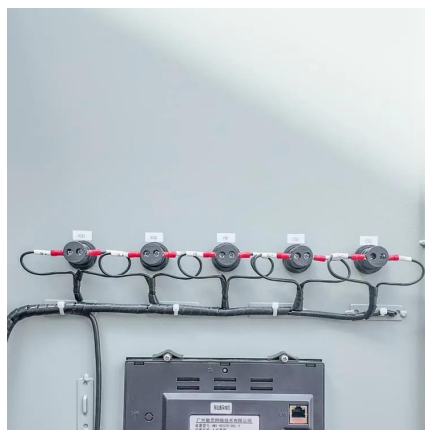


Wind Energy Factsheet



Among universities, University of California, University of Iowa, and Arizona State led green power use, with University of Iowa obtaining 84% of electricity from green sources in 2024.

[Request Quote](#)



[How Much Electricity Does a Wind Turbine](#)

...

Learn how much electricity wind turbines generate, what affects their output, and how hybrid systems boost renewable energy ...

[Request Quote](#)

Wind power

Wind power is thus proportional to the third power of the wind speed; the available power increases eightfold when the wind speed doubles. ...

[Request Quote](#)



Wind Energy Factsheet

Among universities, University of California, University of Iowa, and Arizona State led green power use, with University of Iowa obtaining 84% of ...

[Request Quote](#)

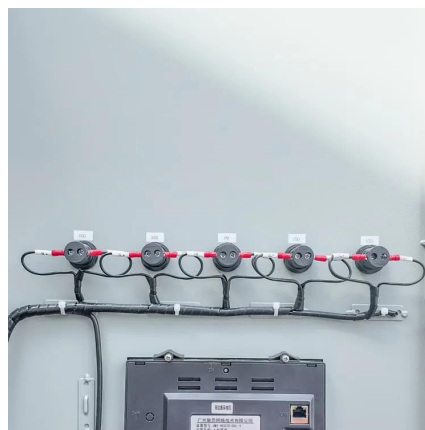
[Consumption of Electricity by Wind](#)



[Turbines \[AWEO \]](#)

Large wind turbines require a large amount of energy to operate. Other electricity plants generally use their own electricity, and the difference between the amount they generate and the ...

[Request Quote](#)



State Energy Profile Data

Data in this section highlight only a small number of the many series available for this state. Use the "more" links on this page or the "Find" tool to access EIA's additional state ...

[Request Quote](#)

[How Much Electricity Does A Wind Turbine Use](#)

Determining the appropriate wind turbine size to power your home largely depends on your electricity consumption and local wind conditions. In the UK, the average household ...

[Request Quote](#)



[How Much Energy Does a Wind Turbine Produce?](#)

U.S. wind turbines produce about 434 billion kilowatts (kWh) of electricity a year, and it only takes an average of 26 kWh of energy to power an entire home for a day.

[Request Quote](#)



Contact Us

For catalog requests, pricing, or partnerships, please visit:

<https://www.energyinnovationday.pl>

Phone: +48 22 335 1273

Email: info@energyinnovationday.pl

Scan the QR code to contact us via WhatsApp.

