



How much electricity does a 5G base station in Zimbabwe consume





Overview

How much power does a 5G base station use?

“A 5G base station is generally expected to consume roughly three times as much power as a 4G base station. And more 5G base stations are needed to cover the same area,” -IEEE Spectrum, 5G’s Waveform Is a Battery Vampire.

How much electricity does 5G use?

To achieve gigabit speeds, the plan with 5G is to have it operate at very high frequencies of 24-26 Gigahertz. For this reason, 5G requires millions of new so-called “small cells,” for example, transmitters in lampposts. Billions of new wireless devices will soon be available worldwide. All of the above consumes electricity.

How much energy does a 5G small cell BS consume?

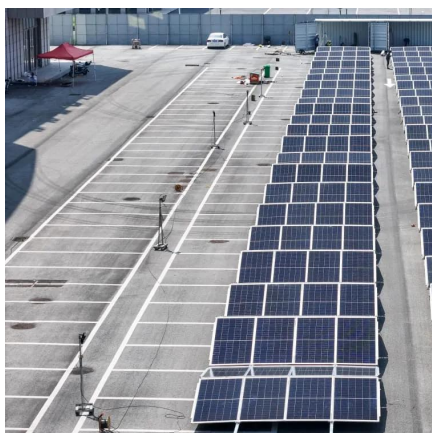
Simulation results reveal that more than 50% of the energy is consumed by the computation power at 5G small cell BS’s. Moreover, the computation power of 5G small cell BS can approach 800 watt when the massive MIMO (e.g., 128 antennas) is deployed to transmit high volume traffic.

What is 5G NR?

The 5G NR standard has been designed based on the knowledge of the typical traffic activity in radio networks as well as the need to support sleep states in radio network equipment. By putting the base station into a sleep state when there is no traffic to serve i.e. switching off hardware components, it will consume less energy.



How much electricity does a 5G base station in Zimbabwe consume



Zimbabwe: 60 5G Sites, 77 Base Stations, and 10 Rural Towers: ...

In a bold step to extend broadband access, 60 5G sites were deployed in the final quarter of the year, enhancing connectivity for both urban and underserved areas.

[Request Quote](#)

How much power does 5G consume?

One 5G base station is estimated to consume about as much power as 73 households (6), and 3x as much as the previous generation of base stations (5), (7). When base stations, data centers ...

[Request Quote](#)



What is 5G Energy Consumption?

With 5G projected to increase capacity up to approximately 1000-fold and high frequency millimeter wave (mmWave) transmission driving exponentially higher cell density, this ...

[Request Quote](#)

Zimbabwe Records 53% Surge in 5G Rollout as Mobile Base Stations ...

According to the latest sector performance report by the Postal and Telecommunications Regulatory Authority of Zimbabwe (Potraz), the country recorded a ...



[Request Quote](#)



[Energy Consumption of 5G, Wireless Systems and ...](#)

"A 5G base station is generally expected to consume roughly three times as much power as a 4G base station. And more 5G base stations are ...

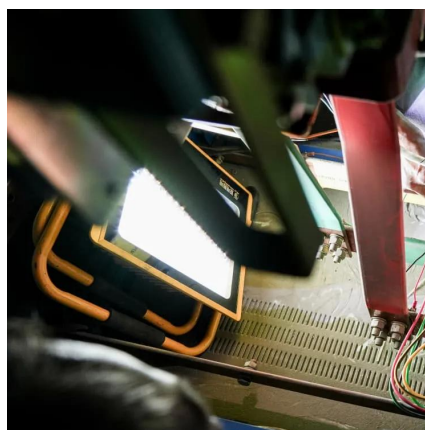
[Request Quote](#)



[Zimbabwe Records 53% Surge in 5G Rollout as ...](#)

According to the latest sector performance report by the Postal and Telecommunications Regulatory Authority of Zimbabwe ...

[Request Quote](#)



How Much Power Does a 5G Base Station Consume? - Smart Solar

On average, a 5G base station consumes between 1,000 to 3,000 watts. This is significantly higher than 4G base stations, which typically consume 500 to 1,500 watts.

[Request Quote](#)



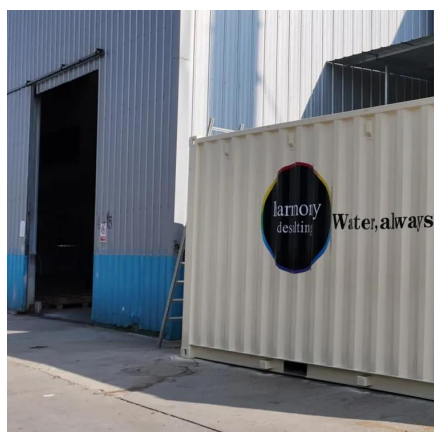
[60 5G Sites, 77 Base Stations, and 10](#)



[Rural ...](#)

In a bold step to extend broadband access, 60 5G sites were deployed in the final quarter of the year, enhancing connectivity for both ...

[Request Quote](#)



[A technical look at 5G energy consumption and performance](#)

Base Station Power Consumption
Energy Saving Features of 5G New Radio
How Much Energy Can We Save with Nr Sleep Modes?
Impact on Energy Efficiency and Performance in A Super Dense Urban Scenario
Further Reading
Today we see that a major part of energy consumption in mobile networks comes from the radio base station sites and that the consumption is stable. We can also see that even in densely deployed networks, as in city centers, the network traffic load can fluctuate very much during the day, with significant periods of almost no traffic in the base sta See more on ericsson

Searches you might like

5g network
how much electricity does a data center use
data center electricity consumption
how much power does a data center use
jrseco

How much power does 5G consume? - JRS Eco ...

One 5G base station is estimated to consume about as much power as 73 households (6), and 3x as much as the previous generation of base ...

[Request Quote](#)

[60 5G Sites, 77 Base Stations, and 10 Rural Towers: Econet's](#)

In a bold step to extend broadband access, 60 5G sites were deployed in the final quarter of the



year, enhancing connectivity for both urban and underserved areas. In addition, ...

[Request Quote](#)



Energy Consumption of 5G, Wireless Systems and the Digital ...

"A 5G base station is generally expected to consume roughly three times as much power as a 4G base station. And more 5G base stations are needed to cover the same area," -IEEE ...

[Request Quote](#)



How Much Power Does 5G Base Station Consume? , Huijue ...

The average 5G base station consumes 2.5-4 kW daily - equivalent to powering 40 refrigerators simultaneously. Three factors amplify this: Operators now spend 20-40% of ...

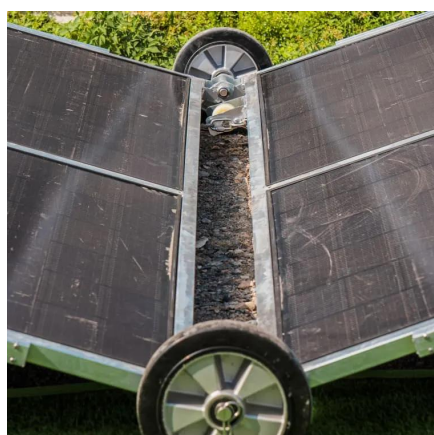
[Request Quote](#)



ZIMBABWE INSTALLS 27 5G BASE STATIONS

Base station operators deploy a large number of distributed photovoltaics to solve the problems of high energy consumption and high electricity costs of 5G base stations.

[Request Quote](#)



A technical look at 5G energy



consumption and performance

To understand this, we need to look closer at the base station power consumption characteristics (Figure 3). The model shows that there is significant energy consumption in the ...

[Request Quote](#)





Contact Us

For catalog requests, pricing, or partnerships, please visit:

<https://www.energyinnovationday.pl>

Phone: +48 22 335 1273

Email: info@energyinnovationday.pl

Scan the QR code to contact us via WhatsApp.

