



# How much current does the solar DC combiner box have





## Overview

---

A DC combiner box handles the raw, high-voltage direct current coming straight from your solar panels—we're talking 600V to over 1,500V DC in modern systems.

A DC combiner box handles the raw, high-voltage direct current coming straight from your solar panels—we're talking 600V to over 1,500V DC in modern systems.

To determine the size of a solar combiner box, check key factors. These include how many inputs you need and voltage limits. You also need to know the current your system uses. These details help keep your system safe and working well. The right combiner box organizes solar panel wires and prevents.

A solar combiner box is mainly used to collect the direct current (DC) generated by photovoltaic modules and distribute it to subsequent inverters or other equipment. In a photovoltaic (PV) power generation system, PV modules are connected in series to form strings, which are then routed to the PV.

Here's what most engineers miss: AC and DC combiner boxes operate at fundamentally different points in the solar power conversion process. A DC combiner box handles the raw, high-voltage direct current coming straight from your solar panels—we're talking 600V to over 1,500V DC in modern systems. An.

A Smart combiner box is an electrical device that combines the output of multiple solar strings into a single DC output. It plays a crucial role in solar power systems by streamlining the management of solar panel arrays, enhancing system performance, and simplifying maintenance tasks. PV smart.

A combiner box merges multiple PV strings into one safe DC output, adds over-current fuses or breakers, includes surge (SPD) protection, and can add monitoring. It makes wiring tidy, serviceable, and safer. I am Wao Wu, co-founder and Sales Director at ADNLITE. I design and price solar systems.

A combiner box is a key DC distribution device used between PV strings and the inverter. Each string consists of solar modules wired in series, and the combiner box gathers multiple strings into a single output while ensuring safety and system efficiency. Current Collection: Consolidates DC output.



## How much current does the solar DC combiner box have



### [Understanding PV Combiner Boxes: Design, Function, ...](#)

Current Collection and Transmission. A standard combiner box supports 6-24 PV string inputs, with typical current per string ranging from 10-20A. Key features include: ...

[Request Quote](#)

### [Understanding PV Combiner Boxes: Design, ...](#)

Current Collection and Transmission. A standard combiner box supports 6-24 PV string inputs, with typical current per string ranging ...

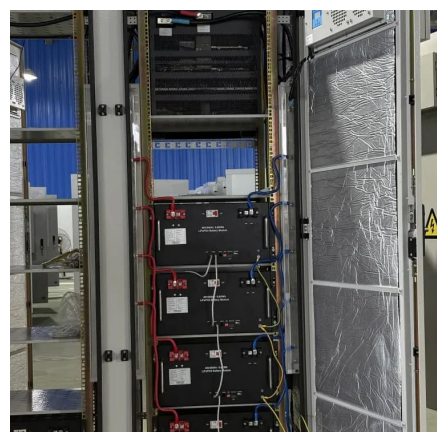
[Request Quote](#)



### **Photovoltaic DC Combiner Box vs. AC Combiner Box: What's the ...**

Photovoltaic DC combiner boxes and AC combiner boxes are key components in PV systems for power consolidation, but they differ significantly in function, structure, and ...

[Request Quote](#)



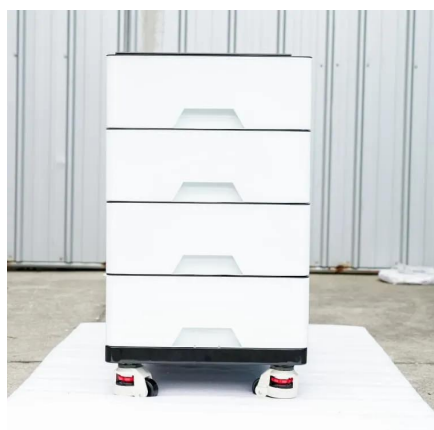
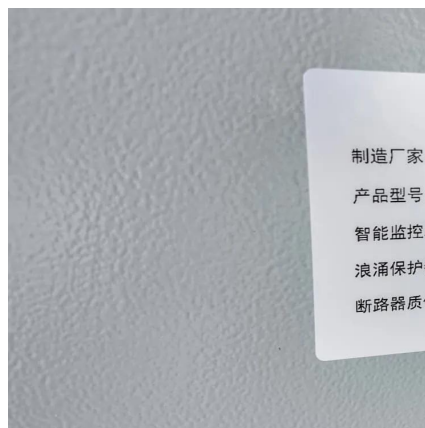
### [How to determine the size of the solar combiner box](#)

Find out the highest current and voltage your system makes. Add a safety buffer by multiplying the current by 1.25. Think about adding more panels later. Pick a combiner box with extra slots

...



[Request Quote](#)



## What Is a Combiner Box in a Solar Panel System? Complete Guide

A good combiner box combines current, stops over-current, absorbs surges, and reports live data. These four parts raise safety, speed up service, and protect the inverter.

[Request Quote](#)

## [The Ultimate Guide to Solar Combiner Boxes: ...](#)

Maximum Current: Select a combiner box with a current rating that can handle the maximum current produced by your solar panel ...

[Request Quote](#)



## AC vs DC Combiner Box

Here's what most engineers miss: AC and DC combiner boxes operate at fundamentally different points in the solar power conversion process. A DC combiner box ...

[Request Quote](#)

## GRL DC PV smart combiner box



If each solar combiner box can handle 5 strings, you would need 2 combiner boxes (10 strings / 5 strings per combiner box). Always consult with a ...

[Request Quote](#)



## [Solar Combiner Box: The Ultimate Buying Guide](#)

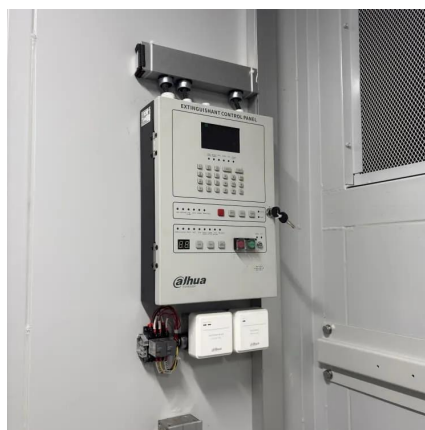
Regarding current, the rated current at the inverter input should be greater than the combined current at the combiner box output, typically with a 10-20% margin to ensure safe operation.

[Request Quote](#)

## Comparing AC and DC Combiner Boxes: What Solar Installers ...

DC combiner boxes take direct current from solar panels and send it to the inverter. AC combiner boxes work with alternating current from inverters and send it to the grid.

[Request Quote](#)



## The Ultimate Guide to Solar Combiner Boxes: From Basics to ...

Maximum Current: Select a combiner box with a current rating that can handle the maximum current produced by your solar panel strings. Common ratings are typically below ...

[Request Quote](#)

## What is DC PV Solar Combiner Box



Inside the DC string combiner box, the direct current is combined and distributed through controllers and DC distribution components. It is finally converted into alternating ...

[Request Quote](#)



### [What Is a Combiner Box in a Solar Panel System?](#)

A good combiner box combines current, stops over-current, absorbs surges, and reports live data. These four parts raise safety, speed up service, and ...

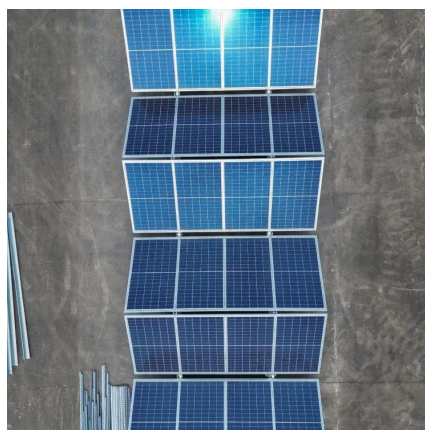
[Request Quote](#)



### **GRL DC PV smart combiner box**

If each solar combiner box can handle 5 strings, you would need 2 combiner boxes (10 strings / 5 strings per combiner box). Always consult with a professional solar installer to determine the ...

[Request Quote](#)





## Contact Us

---

For catalog requests, pricing, or partnerships, please visit:

<https://www.energyinnovationday.pl>

Phone: +48 22 335 1273

Email: [info@energyinnovationday.pl](mailto:info@energyinnovationday.pl)

Scan the QR code to contact us via WhatsApp.

