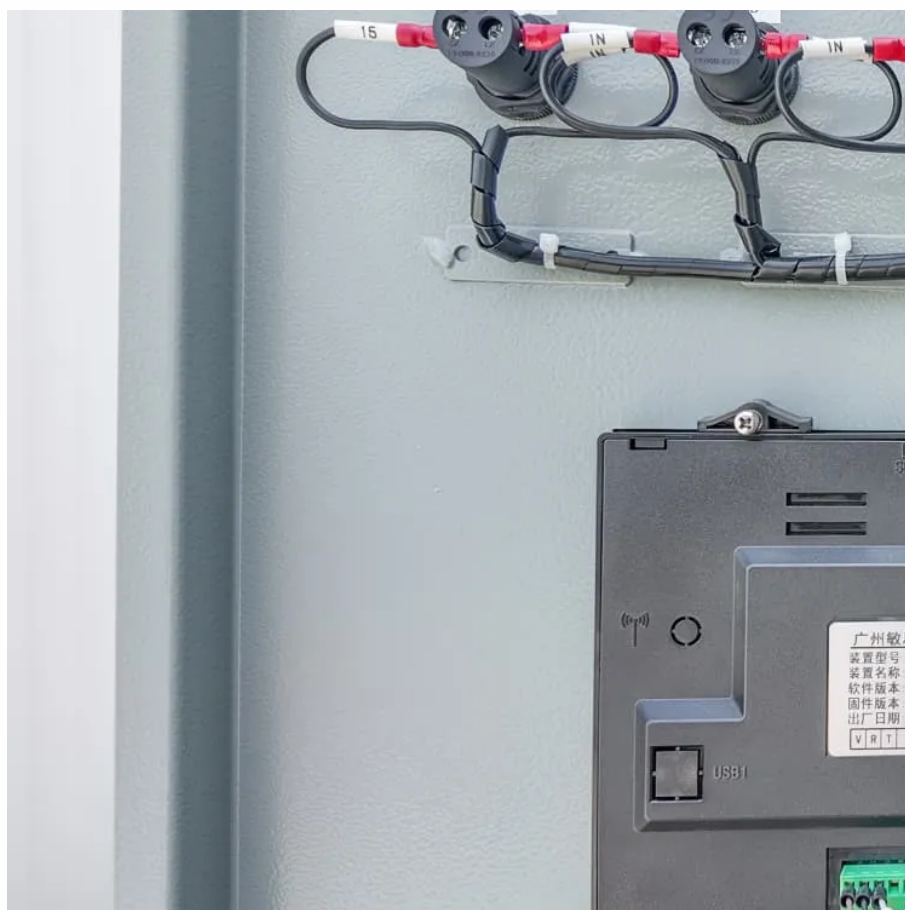




How much current does the mobile base station power supply have





Overview

Telecom power supplies are typically powered by 48 VDC, but there is a growing trend where Base Transceiver Station (BTS) equipment is powered by 110/220 VAC.

Telecom power supplies are typically powered by 48 VDC, but there is a growing trend where Base Transceiver Station (BTS) equipment is powered by 110/220 VAC.

The Duracomm Power Supply delivers a simple solution for MicroMobile users to kickstart their base station by easily connecting the GMRS radios to a standard AC electrical plug, bringing powerful communication to homes and businesses. For product support visit support.midlandusa.com The MXT500.

This product is available globally. The ICT Comm Series switching power supplies deliver continuous trouble-free operation and incorporate extra filtering for a virtually noise-free environment. Designed for a wide range of mobile radio communications equipment and 12V accessories, the low profile.

Telecom power supplies are typically powered by 48 VDC, but there is a growing trend where Base Transceiver Station (BTS) equipment is powered by 110/220 VAC. While it is highly recommended that all electrical ports have some sort of protection, most 48 VDC power supplies will have limited.

Power supplies can be employed in each of the three systems that compose wireless base stations. These three systems are known as the environmental monitoring system, the data communication system, and the power supply system. Each of these systems is in turn divided into smaller sections and.

The General Mobile Radio Service (GMRS) is a North American land-mobile FM UHF radio service designed for short-distance two-way communication. It requires a license in United States but can be used license-free in Canada. ----- "Information is power. But like all power, there are those who want to.

The Motorola HPN4007 is a power supply & cable. This power supply is a genuine Motorola power supply for Motorola mobile two way radios. It has been designed to power 25 to 60 watt radios, allowing you to use this power supply to power your



Motorola mobile radio as a basic base station for your. Can a mobile radio be used as a base station?

Of course, there is a little matter of power. A mobile radio is specifically designed to operate on DC power from a vehicle. It has no internal power transformer or inverter of its own, so it isn't made to plug into the AC wall outlet of a home or office building. In that case, how do you power a mobile radio for use as a base station?

That's easy.

Do mobile radios need a power supply?

Mobile radios have different power requirements, and power supplies have different power ratings. Choose the correct power supply for your radio, and you may have years of clean power with no noisy interference and uninterrupted service. Choose the wrong one, and your radio may not be able to transmit or even stay on from the start.

How much power does a mobile radio need?

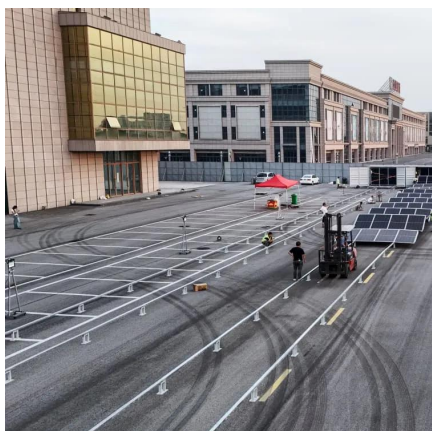
For starters, let's discuss how much power you will need for safe and stable operation. For this, you will need the operating specs of your radio. Since mobile radios are designed for use in a vehicle, they will typically need Direct Current (DC) between 12VDC and 13.8VDC operate.

How do I choose the right size power supply for my Radio?

To the average layperson, all this sounds overly complicated. So to simplify the process, here are some general guidelines for choosing the right size power supply for your radio. Use the manufacturer's amp rating of the radio as the rule. Use the maximum, or peak load rating of the radio, not the standby or typical draw.



How much current does the mobile base station power supply have



Land Mobile Radio DC Power Supplies in 12 and 24VDC Output ...

Reliability Performance Dependability Flexibility Land Mobile Radio Covers wide selection of power levels 12 and 24VDC outputs Standard desktop package with 19 inch rackmount and wall mount bracket options Broad selection of matching radio covers to complete your land mobile radio base station solutions See more on heliosps Bourns [PDF]

Protection for an AC Power Supply in a Mobile Transceiver ...

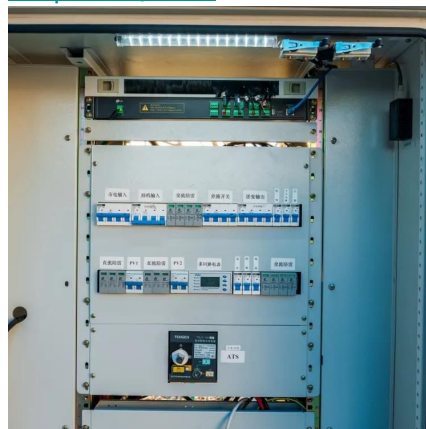
48 VDC power supply, the Model 1250-xS-230 SPD provides a 20 kA nominal surge current, a 50 kA maximum discharge current and a 1 kV Voltage Protection Rating (VPR).

[Request Quote](#)

Selecting the Right Supplies for Powering 5G Base Stations

As a result, a variety of state-of-the-art power supplies are required to power 5G base station components. Modern FPGAs and processors are built using advanced nanometer processes ...

[Request Quote](#)



Protection for an AC Power Supply in a Mobile Transceiver ...

48 VDC power supply, the Model 1250-xS-230 SPD provides a 20 kA nominal surge current, a 50 kA maximum discharge current and a 1 kV Voltage Protection Rating (VPR).

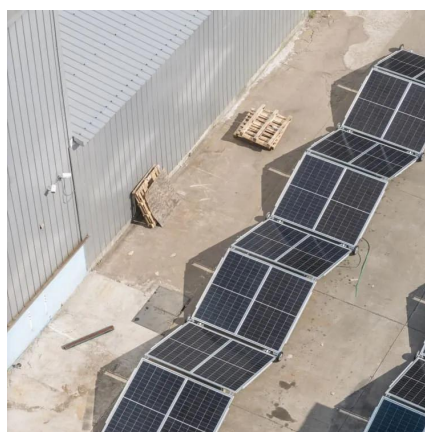
[Request Quote](#)



[Motorola HPN4007 , Power Supply and Cable](#)

It has been designed to power 25 to 60 watt radios, allowing you to use this power supply to power your Motorola mobile radio as a basic base station for your fleet. The HPN4007 is ...

[Request Quote](#)



Power Supply Solutions for Wireless Base Stations Applications

In particular, MORNSUN can provide specific power supply solutions for optical communication and 5G base stations applications. In particular, MORNSUN's VCB/VCF series of isolated 3 ...

[Request Quote](#)

Land Mobile Radio DC Power Supplies in 12 and 24VDC Output ...

Comm Series power supplies are available in 120 and 220 VAC inputs with 12, 24, and 48 VDC outputs, providing 70W to 625W of continuous power. Combine your radio with a reliable ...

[Request Quote](#)



[LPX-14 Base Station Power Supply .](#)



[Midland Radio](#)

Convert your MicroMobile into a base station with the DURACOMM LPX-14 radio power supply, available from Midland Radio. This power supply is 7" wide.

[Request Quote](#)

[Motorola HPN4007 , Power Supply and Cable](#)

It has been designed to power 25 to 60 watt radios, allowing you to use this power supply to power your Motorola mobile radio as a basic base station ...

[Request Quote](#)



[Choosing the right size power supply for your radio](#)

Mobile radios have different power requirements, and power supplies have different power ratings. Choose the correct power supply for your radio, and you may have years of ...

[Request Quote](#)

what kind of power supplies do you guys use for base station

That radio should run from 11.73v to 15.87v but at 12v and 5 amps, you'll probably put too much demand on that little power supply. I use a switching power supply similar to this one.

[Request Quote](#)



Power supply recommendations?



What is a good and not very expensive power supply that can handle the amp draw of a 40-50 watt GMRS mobile to be used as a base station? Turns out the power supply that I ...

[Request Quote](#)

[Choosing a Power Supply for Your Station](#)

The figure you want to look at is the continuous rating--the amount of current the power supply can provide. For example, the Samlex SEC-1235P-M switching power supply is ...

[Request Quote](#)



[Selecting the Right Supplies for Powering 5G Base Stations](#)

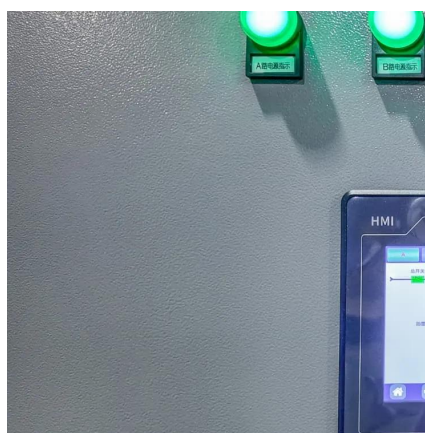
As a result, a variety of state-of-the-art power supplies are required to power 5G base station components. Modern FPGAs and processors are built using advanced nanometer processes ...

[Request Quote](#)

what kind of power supplies do you guys use for base station

That radio should run from 11.73v to 15.87v but at 12v and 5 amps, you'll probably put too much demand on that little power supply. I use a switching power supply similar to this ...

[Request Quote](#)





Contact Us

For catalog requests, pricing, or partnerships, please visit:

<https://www.energyinnovationday.pl>

Phone: +48 22 335 1273

Email: info@energyinnovationday.pl

Scan the QR code to contact us via WhatsApp.

