



# How much current does the external power supply of the base station have





## Overview

---

Here are the specific requirements of a suitable power supply: Voltage output: 12V to 14V DC Current output: minimum 4 amps for the 148GTL, minimum 3 amps for all other models The 148GTL has a higher power requirement because it needs extra power for operation on single sideband.

Here are the specific requirements of a suitable power supply: Voltage output: 12V to 14V DC Current output: minimum 4 amps for the 148GTL, minimum 3 amps for all other models The 148GTL has a higher power requirement because it needs extra power for operation on single sideband.

This power supply can be used as a base station and capable to work at various AC source conditions worldwide. The built-in float circuit keeps the backup battery in optimum status. When AC power is interrupted, the power supply can be switched by the external lead-acid battery. 1)The maximum rated.

How much voltage drop occurs on the connection cable?

The results of a cable calculator, using three common cable cross-sections as examples, give an idea of the voltage drop on the connecting cable of a short-wave transceiver. 300 W DC input power at 13.8 V, corresponding to a current consumption.

Must use an external power supply to power the radio. Controls are close together. Speaker usually fires downward, which does not provide the best audio. An external speaker can be used for better audio. The main reasons to use a mobile CB in your home is because they cost less and you can buy them.

As a result, a variety of state-of-the-art power supplies are required to power 5G base station components. Modern FPGAs and processors are built using advanced nanometer processes because they often perform calculations at fast speeds using low voltages (<0.9 V) at high current from compact.

The idea of base stations is anchored in their function to provide coverage, capacity, and connectivity, hence allowing for extending the working capabilities of mobile phones and other radio gear. What is Base Station?



## What is Base Station?

A base station represents an access point for a wireless.

The basic components for a Base Station CB System include a CB radio, power supply (if you are using a mobile CB radio instead of a base station CB radio), coax, and an antenna. The article is designed to help provide you with recommendations and advice. We hope it helps! We have selected the. What are the components of a base station?

**Power Supply:** The power source provides the electrical energy to base station elements. It often features auxiliary power supply mechanisms that guarantee operation in case of lost or interrupted electricity, during blackouts. **Baseband Processor:** The baseband processor is responsible for the processing of the digital signals.

## What are the components of a base station CB system?

Remember, the longer the CB antenna, the more potential range that you will have. The basic components for a Base Station CB System include a CB radio, power supply (if you are using a mobile CB radio instead of a base station CB radio), coax, and an antenna.

## Can a power supply be used for a radio station?

Power supplies with a wide range of variable output voltage are more suitable for use as a laboratory power supply. In principle, however, such a power supply can be used for operating a radio station, provided it can deliver the maximum required current at 13.8 V. However, there is a risk in using such power supplies.

## Which base station Radio will plug directly into my wall outlet?

We have selected the Galaxy DX2547 first, as this is the only base station radio that we offer that will plug directly into your wall outlet. You can choose to get a mobile CB radio, like the DX959B, but will require an additional power supply.



## How much current does the external power supply of the base station



### [Power Supply Management for Ham Radio](#)

The majority of transceivers with a standard output power of 100 W without an integrated power supply unit are designed for direct connection to an external low-voltage power supply unit, ...

[Request Quote](#)

### [Selecting the Right Supplies for Powering 5G Base Stations](#)

These tools simplify the task of selecting the right power management solutions for these devices and, thereby, provide an optimal power solution for 5G base stations components.

[Request Quote](#)



### **Power converter for base station**

A 30 amp power supply will handle two 50 watt radios transmitting at the same time as long as you are running low or medium power on both radios. Trying to transmit on high ...

[Request Quote](#)

### [Power Supply Management for Ham Radio](#)

The majority of transceivers with a standard output power of 100 W without an integrated power supply unit are designed for direct connection to an ...



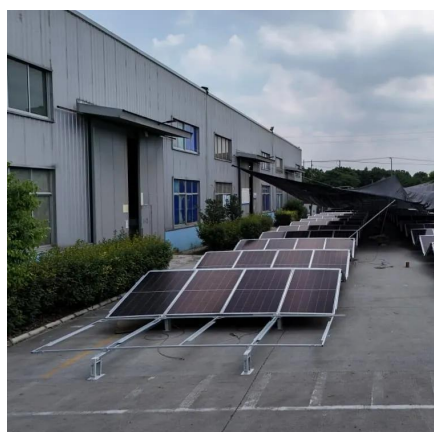
[Request Quote](#)



### [CB Radio Base Station Equipment Recommendations and Advice](#)

We have selected the DX959 and PS12 for this kit. You will still need to select a base station antenna and coax for that option. Keep in mind that, regardless of size, all CB radios have a ...

[Request Quote](#)



### [Selecting the Right Supplies for Powering 5G Base Stations](#)

These tools simplify the task of selecting the right power management solutions for these devices and, thereby, provide an optimal power solution for 5G base stations components.

[Request Quote](#)



### **Power converter for base station**

A 30 amp power supply will handle two 50 watt radios transmitting at the same time as long as you are running low or medium ...

[Request Quote](#)



### [CB Radio Base Station : Cobra Electronics](#)



To use a mobile CB in your home, you need a power supply that provide 12 volts DC. Here are the specific requirements of a suitable power supply: Voltage output: 12V to 14V ...

[Request Quote](#)



### Hytera , PS22002

This power supply can be used as a base station and capable to work at various AC source conditions worldwide. The built-in float circuit keeps the backup battery in optimum status.

[Request Quote](#)



### Getting Started in Ham Radio

Amateur Radio equipment is usually marked as requiring 13.8V DC. This value comes from the fact that it is approximately a typical terminal voltage of a freshly charged lead-acid battery and ...

[Request Quote](#)



### Power Supply Solutions for Wireless Base Stations Applications

In particular, MORNSUN can provide specific power supply solutions for optical communication and 5G base stations applications. In particular, MORNSUN's VCB/VCF series of isolated 3 ...

[Request Quote](#)



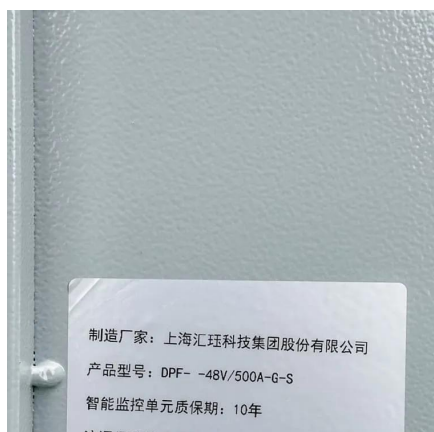
### what kind of power supplies do you



## guys use for base station

I would suggest a dedicated power source with the 13.8V 30A capabilities. Try to use a meter to see exactly how much output wattage your getting now just to see. The radio you have should ...

[Request Quote](#)



## Base Stations

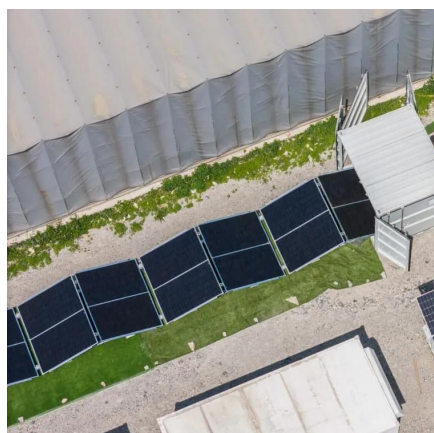
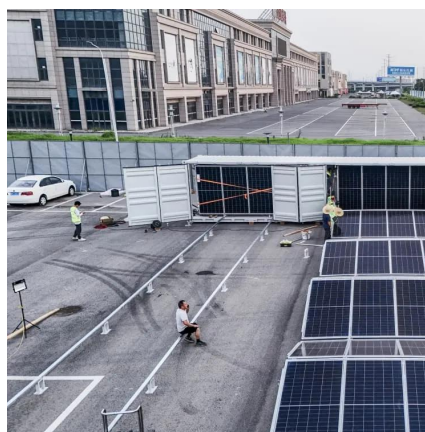
Power Supply: The power source provides the electrical energy to base station elements. It often features auxiliary power supply ...

[Request Quote](#)

## Base Stations

Power Supply: The power source provides the electrical energy to base station elements. It often features auxiliary power supply mechanisms that guarantee operation in ...

[Request Quote](#)



## what kind of power supplies do you guys use for base station

I would suggest a dedicated power source with the 13.8V 30A capabilities. Try to use a meter to see exactly how much output wattage your getting now just to see. The radio ...

[Request Quote](#)



## Contact Us

---

For catalog requests, pricing, or partnerships, please visit:

<https://www.energyinnovationday.pl>

Phone: +48 22 335 1273

Email: [info@energyinnovationday.pl](mailto:info@energyinnovationday.pl)

Scan the QR code to contact us via WhatsApp.

