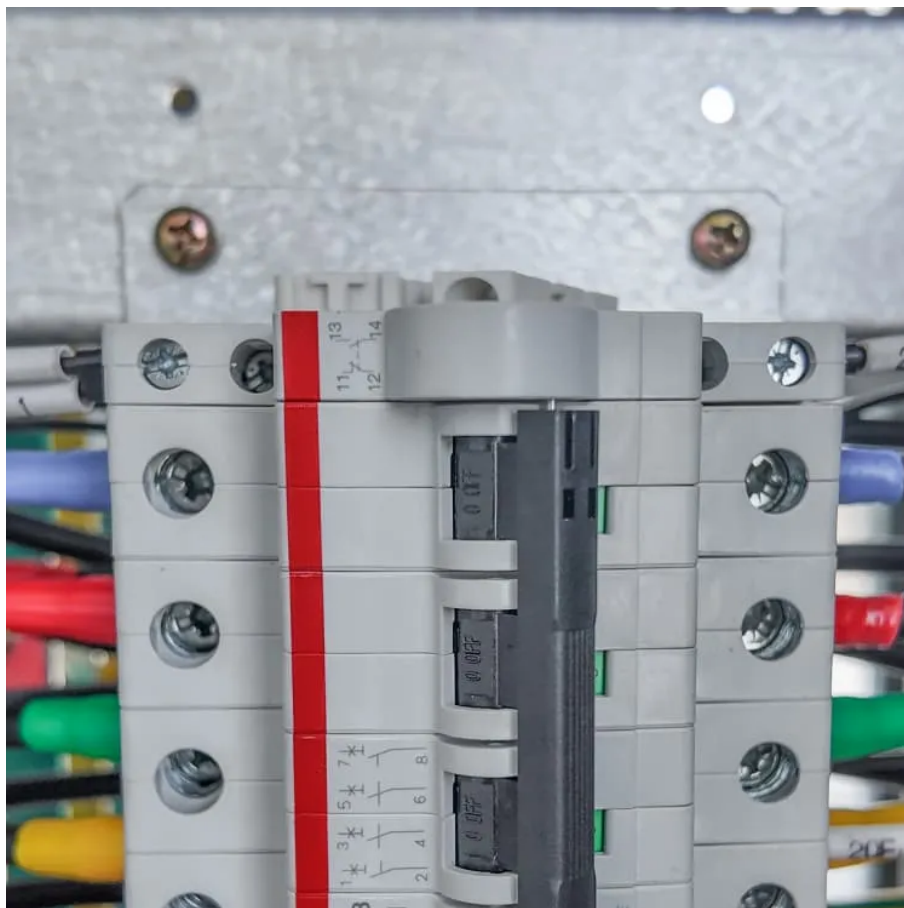




# How much actual power does the inverter correspond to





## Overview

---

A power inverter, inverter, or invertor is a device or circuitry that changes (DC) to (AC). The resulting AC frequency obtained depends on the particular device employed. Inverters do the opposite of which were originally large electromechanical devices converting AC to DC.

kW refers to the real or usable power output of an inverter. kVA represents the total power capacity it can carry, including power lost in phase difference (reactive power). For example, an inverter rated at 10 kVA with a power factor of 0.8 can only deliver 8 kW of real power.

kW refers to the real or usable power output of an inverter. kVA represents the total power capacity it can carry, including power lost in phase difference (reactive power). For example, an inverter rated at 10 kVA with a power factor of 0.8 can only deliver 8 kW of real power.

An inverter draws power from a battery depending on its efficiency, typically over 92%. For a connected load of 250 watts, the inverter uses less than 270 watts from the battery. This value includes energy conversion losses. Understanding inverter specifications helps optimize power consumption and.

Think of your inverter like a translator—its job is to convert the DC (direct current) electricity from your solar panels or batteries into AC (alternating current) power that your appliances can use. And like any translator, it's not always perfect. Some energy gets lost in the process. This blog.

A power inverter, inverter, or invertor is a power electronic device or circuitry that changes direct current (DC) to alternating current (AC). [1] The resulting AC frequency obtained depends on the particular device employed. Inverters do the opposite of rectifiers which were originally large.

The current draw from a 12V or 24V battery when running an inverter depends on the actual load, not the inverter size. A quick rule is to divide watts by 10 for 12V systems or 20 for 24V systems. For more accuracy, divide the load by the actual battery voltage and adjust for inverter efficiency.

kW (kilowatts) measures real power—what actually powers your appliances. kVA (kilovolt-amps) measures apparent power—the total power the inverter handles, including both useful and reactive power. The gap between the two can affect

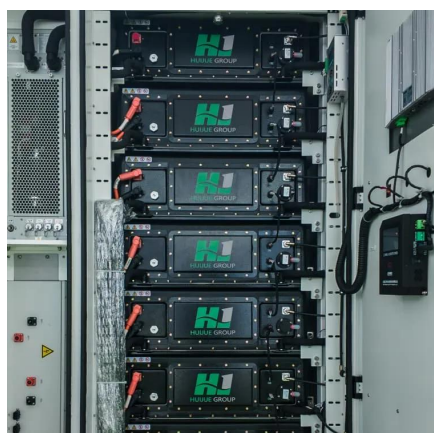


system performance and sizing. Let's break this down so you know.

An inverter is a device that converts direct current (DC) to alternating current (AC) and is widely used in areas such as solar power, electric vehicles and portable power. When choosing an inverter, it is critical to understand its current consumption as this will directly impact battery storage.



## How much actual power does the inverter correspond to



### [Inverter Efficiency: Understanding How Much Power You're ...](#)

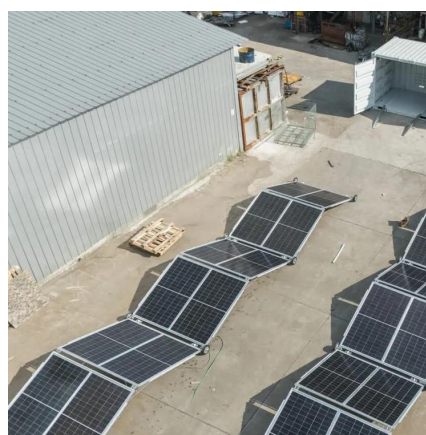
In simple terms, inverter efficiency refers to how well an inverter converts DC electricity into usable AC power. No inverter is 100% efficient--some energy always gets lost ...

[Request Quote](#)

### Power inverter

Overview  
Input and output  
Batteries  
Applications  
Circuit description  
Size  
History  
See also

A power inverter, inverter, or invertor is a power electronic device or circuitry that changes direct current (DC) to alternating current (AC). The resulting AC frequency obtained depends on the particular device employed. Inverters do the opposite of rectifiers which were originally large electromechanical devices converting AC to DC.



[Request Quote](#)



### [Inverter Power Calculator & Formula Online Calculator Ultra](#)

This calculator streamlines the process of estimating the effective AC power output of an inverter, making it easier for individuals and professionals to plan and implement ...

[Request Quote](#)

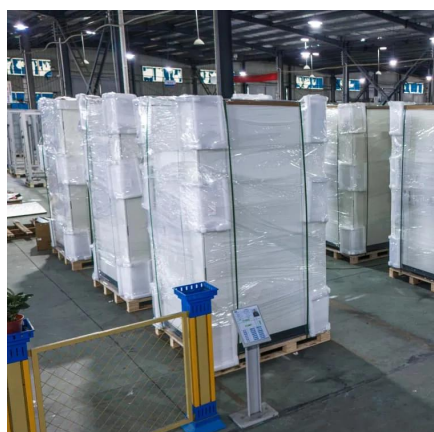
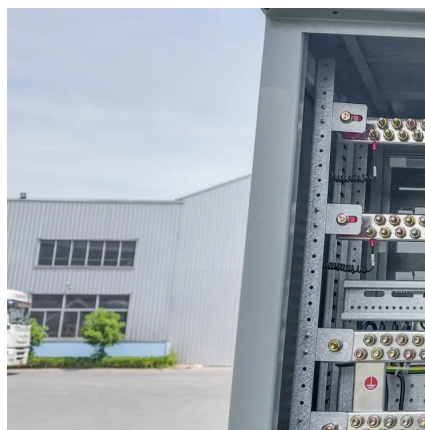
### [How To Read And Interpret An Inverter Specification](#)

Inverters generally have an input voltage of 12V,



24V, or 48V. The inverter selected must match the power source, such as batteries or solar panels. Solar and EV systems usually use higher ...

[Request Quote](#)



## What Does An Inverter Do? Complete Guide To Power Conversion

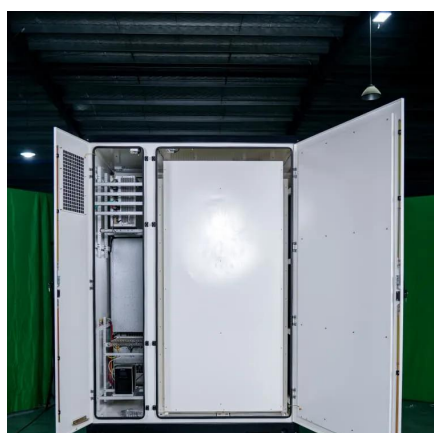
Learn what inverters do, how they convert DC to AC power, types available, and applications. Complete guide with sizing tips, safety advice, and expert insights.

[Request Quote](#)

## Power inverter

A power inverter, inverter, or invertor is a power electronic device or circuitry that changes direct current (DC) to alternating current (AC). [1] The resulting AC frequency obtained depends on ...

[Request Quote](#)



## [Inverter Power Draw: How Much Power Does an Inverter Use ...](#)

According to the U.S. Department of Energy, modern inverters can have efficiency ratings between 80% to 95%. This means that if an inverter needs to deliver 1,000 watts of AC ...

[Request Quote](#)

## [Understanding Inverter Power Ratings: kW](#)



## [vs kVA Explained](#)

kW refers to the real or usable power output of an inverter. kVA represents the total power capacity it can carry, including power lost in phase difference (reactive power). For example, ...

[Request Quote](#)



## [What Does An Inverter Do? Complete Guide To ...](#)

Learn what inverters do, how they convert DC to AC power, types available, and applications. Complete guide with sizing tips, safety ...

[Request Quote](#)

## [How Many Amps Does an Inverter Draw?](#)

Truth: The power consumption of the inverter itself is usually positively correlated with its power rating. Higher power inverters may result in higher energy losses when handling ...

[Request Quote](#)



## [How Many Amps Does an Inverter Draw?](#)

Truth: The power consumption of the inverter itself is usually positively correlated with its power rating. Higher power inverters may ...

[Request Quote](#)

## **How much power does an inverter**



## draw? - REDARC North America

The current draw from a 12V or 24V battery when running an inverter depends on the actual load, not the inverter size. A quick rule is to divide watts by 10 for 12V systems or 20 for 24V systems.

[Request Quote](#)



## [How Does a Power Inverter Work? An Easy Explanation for ...](#)

A power inverter converts DC to AC, letting batteries or solar panels run household devices. Learn how inverters work, their types, sizing tips, installation guide, and what to ...

[Request Quote](#)

## [How To Read And Interpret An Inverter Specification](#)

Inverters generally have an input voltage of 12V, 24V, or 48V. The inverter selected must match the power source, such as batteries or solar panels. ...

[Request Quote](#)



## [Understanding Inverter Power Ratings: kW vs kVA ...](#)

kW refers to the real or usable power output of an inverter. kVA represents the total power capacity it can carry, including power lost in phase ...

[Request Quote](#)

## [How Does a Power Inverter Work? An Easy](#)



...

A power inverter converts DC to AC, letting batteries or solar panels run household devices. Learn how inverters work, their types, ...

[Request Quote](#)





## Contact Us

---

For catalog requests, pricing, or partnerships, please visit:

<https://www.energyinnovationday.pl>

Phone: +48 22 335 1273

Email: [info@energyinnovationday.pl](mailto:info@energyinnovationday.pl)

Scan the QR code to contact us via WhatsApp.

