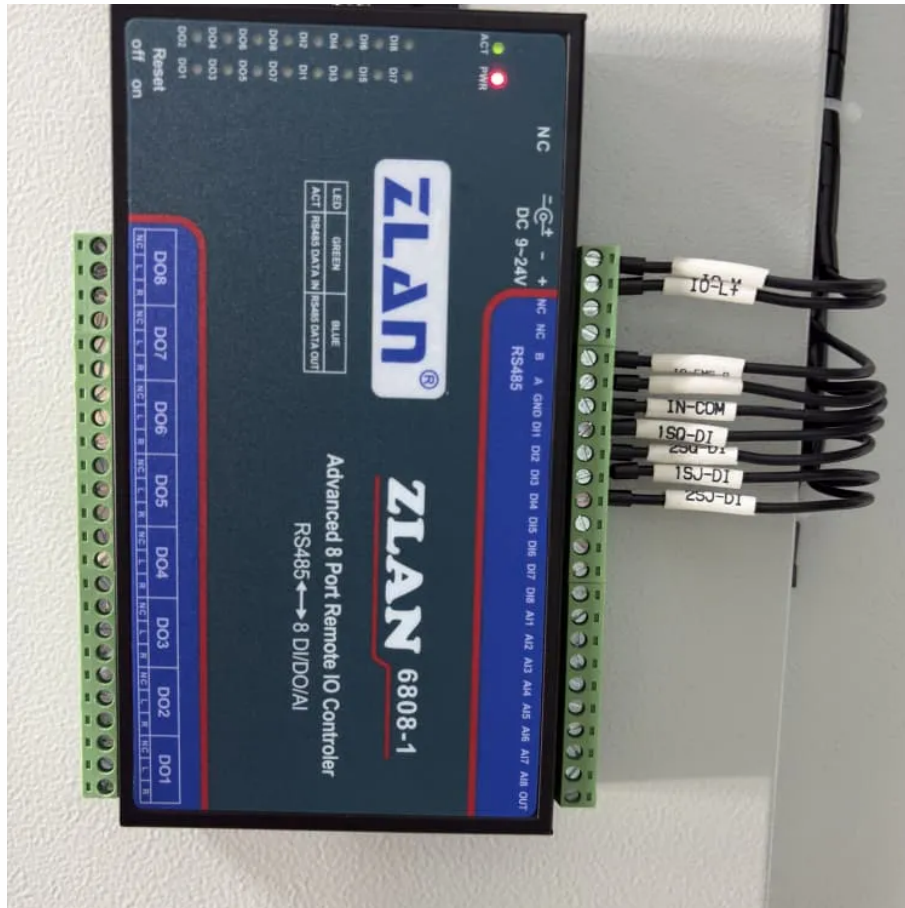




# How many watts of solar street lights should I buy





## Overview

---

A solar street light typically ranges from 20 watts to 100 watts or more. The specific wattage required will depend on several factors, including the area to be illuminated, the height of the installation, and the intended function of the light fixture.

A solar street light typically ranges from 20 watts to 100 watts or more. The specific wattage required will depend on several factors, including the area to be illuminated, the height of the installation, and the intended function of the light fixture.

Determining the appropriate wattage for solar street lights is crucial for ensuring adequate illumination and effective energy utilization. 1. Consider the purpose of the lighting, 2. Evaluate the environment, 3. Assess the height of the mounting pole, 4. Review the efficiency of the LED bulbs.

They want bright lights, but they also worry about cost. I understand this pain, and I want to share solutions. The ideal solar streetlight power depends on location, lighting goals, and overall budget. It is best to balance needed brightness with feasible panel and battery capacity. I want to show.

A solar street light typically consumes between 10 to 80 watts, depending on its use case. For quiet residential paths, 10 to 20 watts might be enough. But when it comes to highways or industrial zones, you're likely looking at 60 watts or more. The beauty is, unlike traditional street lights.

This guide breaks down key factors like lumens, battery capacity, solar panel type, and installation requirements to help distributors, wholesalers, traders, and retailers choose high-quality products. To choose the best solar street light, consider lumens per watt efficiency, battery capacity.

When you buy a light, it says things like 50W, 100W, 200W, 300W - so you know the wattage. Why even ask?

Well, here's the thing: that's true for regular lights that plug into the power grid (we call it 'mains power' or 'grid power' sometimes). These regular lights have strict rules.



Choosing the appropriate wattage for solar street lights hinges on several critical factors, primarily the specific application, environmental considerations, and the desired brightness level. 1. Consider the location and intended use, 2. Assess the brightness in lumens required for effective. How much wattage should a street light use?

Recommended Wattage for Solar Street Lights Based on Area & Pole Height LEDs with 150-200 lm/W efficiency require lower wattage for the same brightness, saving battery power. High-efficiency monocrystalline solar panels ( $\geq 18\%$  efficiency) allow optimal wattage utilization.

What is the wattage of a commercial solar street light?

The wattage of a commercial solar street lights depends on lumen output, pole height, and application type. Higher poles and wider roads require higher wattage to ensure proper brightness and uniform illumination.

How to choose a solar-powered street lighting system?

Understanding the power consumption of a solar-powered street lighting system is the first step in determining the appropriate specifications. The total energy consumption depends on the wattage of the LED fixture and its operating hours per night. Higher-wattage lights require larger battery storage and solar panel capacity. 2.

How much battery does a solar street light need?

Example: If a solar street light requires 300Wh per night and uses a 12V battery, the battery capacity needed is:  $300\text{Wh}/12\text{v}=25\text{Ah}$  LiFePO<sub>4</sub> (Lithium Iron Phosphate) batteries: Longer lifespan, high efficiency, and deep cycle capabilities. Lithium-ion batteries: Cost-effective but may degrade faster.



## How many watts of solar street lights should I buy



### How many watts should I buy for solar street lights? , NenPower

A solar street light typically ranges from 20 watts to 100 watts or more. The specific wattage required will depend on several factors, including the area to be illuminated, the height ...

[Request Quote](#)

### [How many watts of solar street lights should I ...](#)

For instance, a typical solar street light of 30 to 50 watts is generally suitable for residential areas, whereas higher wattage ...

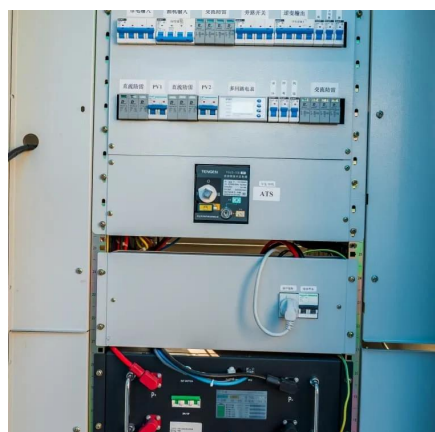
[Request Quote](#)



### [How many watts of solar street lights should I choose?](#)

For instance, a typical solar street light of 30 to 50 watts is generally suitable for residential areas, whereas higher wattage configurations up to 100 watts may be necessary for ...

[Request Quote](#)

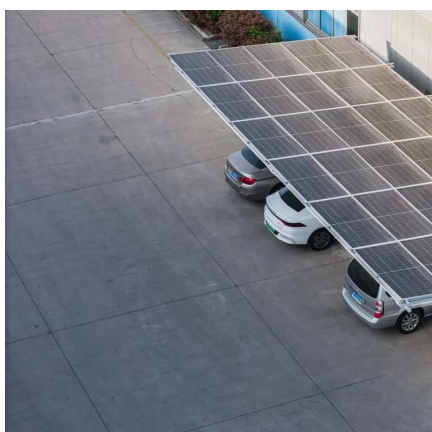


### How many watts of solar LED street lights are suitable for home ...

5W~20W solar LED street lights can meet the needs of most home yards: 5W~10W: suitable for small yards (10~30m<sup>2</sup>), providing basic lighting (such as paths, ...



[Request Quote](#)



### [How to Choose Solar LED Street Light: The ...](#)

Standard LED street lights typically offer 100-120 lm/W, but opt for models with at least 130-200 lm/W for superior performance. ...

[Request Quote](#)

### [How many watts does a solar street light use?](#)

Discover the optimal wattage for your solar street light project. Learn about power consumption, efficiency factors, and cost savings. Expert analysis of residential to industrial ...

[Request Quote](#)



### **How Much Power Does a Solar Street Light Use? (Watts, Energy, ...)**

A solar street light typically consumes between 10 to 80 watts, depending on its use case. For quiet residential paths, 10 to 20 watts might be enough. But when it comes to ...

[Request Quote](#)



### [How to Select the Best Wattage for Solar](#)



## [Street Lights?](#)

The ideal solar streetlight power depends on location, lighting goals, and overall budget. It is best to balance needed brightness with feasible panel and battery capacity.

[Request Quote](#)



## [What lumen is good for residential solar street lights?](#)

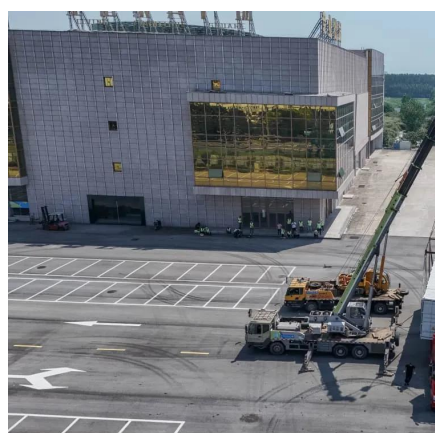
In solar street lights, LED technology reigns supreme, offering high lumens per watt (typically 100-200 lm/W), making them efficient and bright.

[Request Quote](#)

## [How to Choose Solar LED Street Light: The Ultimate Guide](#)

Standard LED street lights typically offer 100-120 lm/W, but opt for models with at least 130-200 lm/W for superior performance. Higher lm/W values translate to better energy ...

[Request Quote](#)



## [How many watts of solar street light is bright enough](#)

Generally, for most applications, a solar street light between 30 to 60 watts will provide adequate brightness, while larger areas may require lights in the 60 to 150 watts range. Always consider ...

[Request Quote](#)

## [Good Solar Light Wattage: Best Power for](#)



## [Outdoor Lighting](#)

Wondering what wattage makes a good solar light? Discover the ideal power range for bright, efficient lighting in any outdoor space.

[Request Quote](#)





## Contact Us

---

For catalog requests, pricing, or partnerships, please visit:

<https://www.energyinnovationday.pl>

Phone: +48 22 335 1273

Email: [info@energyinnovationday.pl](mailto:info@energyinnovationday.pl)

Scan the QR code to contact us via WhatsApp.

