



How many watts of solar panels mean mean





Overview

Solar panel wattage is the maximum amount of power a solar panel can produce under ideal conditions. It's measured in watts (W) and represents the panel's peak power output.

Solar panel wattage is the maximum amount of power a solar panel can produce under ideal conditions. It's measured in watts (W) and represents the panel's peak power output.

Because actual solar panel power output depends on more than just the wattage on the spec sheet. Efficiency, temperature, sunlight, shading, orientation, and even how the panels are tested all influence real performance. To make confident decisions, whether you're sizing a system, comparing.

Wattage refers to the amount of electrical power a solar panel can produce under standard test conditions (STC), which simulate a bright sunny day with optimal solar irradiance (1,000 W/m²), a cell temperature of 25°C, and clean panels. In simpler terms, a panel's wattage rating tells you its.

Simply put, it indicates the maximum amount of electricity a solar panel can produce under ideal conditions, measured in watts (W). For example, a 300-watt panel can generate up to 300 watts of power in one hour when exposed to direct sunlight. Understanding Solar Panel Wattage is essential because.

Wattage indicates the amount of electricity a solar panel can produce under optimal conditions, and it plays a significant role in determining the overall efficiency and effectiveness of a solar energy system. To assess how much wattage you need, factors such as your energy consumption, available.

For example, a 6.6 kW solar system typically consists of 20 panels each delivering 330W of power. Solar Panel Wattage Divide the average daily wattage usage by the average sunlight hours to measure solar panel wattage. Moreover, panel output efficiency directly impacts watts and the system's.

Solar panels come in various sizes and efficiencies, typically ranging from 250 to 400 watts per panel. This variation can depend on several factors, including the type of solar technology used, the manufacturer, and even the geographical



location where the panels are installed. For instance, a. What is solar panel wattage?

Solar panel wattage is the maximum amount of power a solar panel can produce under ideal conditions. It's measured in watts (W) and represents the panel's peak power output. For example, a 400-watt solar panel can generate up to 400 watts of electricity when exposed to full sunlight in a controlled test environment.

How many Watts Does a solar panel produce?

Solar panels are rated in watts based on how much power they can produce under Standard Test Conditions (STC): 1,000 W/m² of sunlight, 25°C (77°F) temperature, and optimal angle. This wattage rating represents the panel's peak output in a lab setting, not in real-world conditions. Do higher watt solar panels produce more electricity?

How many Watts Does a solar panel produce in 2025?

About 97% of home solar panels installed in 2025 produce between 400 and 460 watts, based on thousands of quotes from the EnergySage Marketplace. But wattage alone doesn't tell the whole story. In fact, efficiency matters more than wattage when comparing solar panels—a higher wattage can simply mean that a panel is larger.

How much power does a home solar panel produce?

About 97% of home solar panels included in EnergySage quotes today have power output ratings between 400 and 460 watts. The most frequently quoted panels are around 450 watts, so we'll use this as an example.



How many watts of solar panels mean



[How Much Energy Does A Solar Panel Produce?](#)

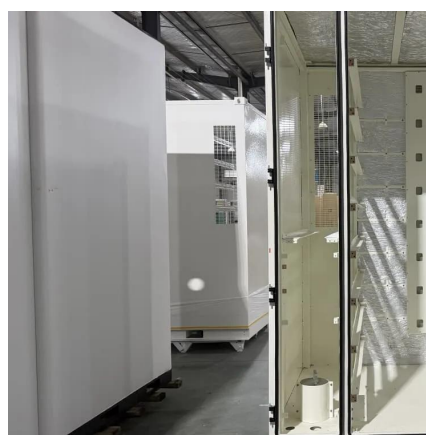
About 97% of home solar panels installed in 2025 produce between 400 and 460 watts, based on thousands of quotes from the ...

[Request Quote](#)

[Understanding Solar Panel Wattage Ratings](#)

Simply put, it indicates the maximum amount of electricity a solar panel can produce under ideal conditions, measured in watts (W). For example, a 300-watt panel can generate up ...

[Request Quote](#)



[How Much Energy Does A Solar Panel Produce?](#)

Most residential panels in 2025 are rated 250-550 watts, with 400-watt models becoming the new standard. A 400-watt panel can generate roughly 1.6-2.5 kWh of energy ...

[Request Quote](#)



[Solar Panel Wattage Explained: How Many Watts Do You Need?](#)

How many watts do you really need to power your home or RV? This guide will explain solar panel wattage clearly, with real-life examples and simple calculations anyone can ...



[Request Quote](#)



[Understanding Solar Panel Wattage Ratings](#)

Simply put, it indicates the maximum amount of electricity a solar panel can produce under ideal conditions, measured in watts (W). ...

[Request Quote](#)



[How Much Energy Does A Solar Panel Produce? , EnergySage](#)

About 97% of home solar panels installed in 2025 produce between 400 and 460 watts, based on thousands of quotes from the EnergySage Marketplace. But wattage alone ...

[Request Quote](#)



[Solar Panel Wattage Explained Simply: Empower Yourself](#)

Wattage: This term means the rated power output of the panel under ideal laboratory conditions. If a panel is 350W, it can produce 350 watts of power when exposed to ...

[Request Quote](#)



[How Many Watts in 1 Solar Panel: Myths](#)



[and Facts Explained](#)

Explore how many watts are in 1 solar panel, debunk common myths, and learn about wattage, efficiency, and solar energy insights.

[Request Quote](#)



[Solar Panel Sizes and Wattage Explained](#)

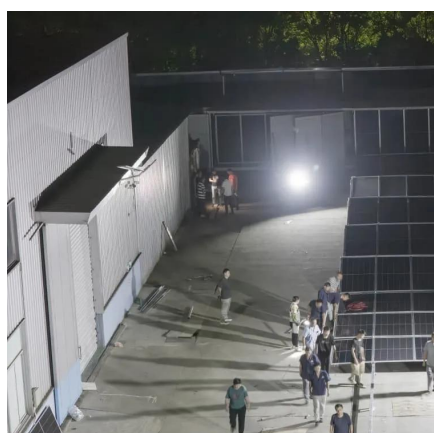
Remember that you decide how many solar panels to install based on your demands, space and budget. Ultimately, for calculating the right solar panel dimension and ...

[Request Quote](#)

[Understanding solar panel wattage: How much do you need?](#)

Solar panel wattage refers to the amount of electricity a panel can produce under standard test conditions, typically measured in watts. This measurement is essential because it directly ...

[Request Quote](#)



[Solar Panel Wattage Explained: How Many Watts ...](#)

How many watts do you really need to power your home or RV? This guide will explain solar panel wattage clearly, with real-life examples ...

[Request Quote](#)

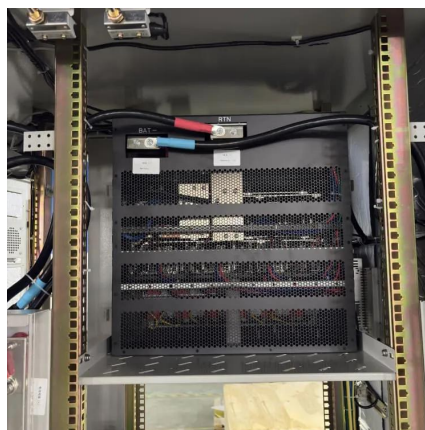
[How Many Watts Per Solar Panel: What](#)



[You Need to Know](#)

The wattage of a solar panel is essentially a measure of its power output. Most residential solar panels fall within the range of 250 to 400 watts per panel. Here's a breakdown ...

[Request Quote](#)



[How Much Energy Does A Solar Panel Produce?](#)

Most residential panels in 2025 are rated 250-550 watts, with 400-watt models becoming the new standard. A 400-watt panel can ...

[Request Quote](#)

[Solar Panel Wattage & Output Explained](#)

Solar panel wattage is the maximum amount of power a solar panel can produce under ideal conditions. It's measured in watts (W) and represents the panel's peak power output.

[Request Quote](#)





Contact Us

For catalog requests, pricing, or partnerships, please visit:

<https://www.energyinnovationday.pl>

Phone: +48 22 335 1273

Email: info@energyinnovationday.pl

Scan the QR code to contact us via WhatsApp.

