



How many watts of power do 38 solar panels produce





Overview

Average solar panel capacity typically ranges from 250 to 400 watts, 2. Thus, 38 panels rated at 300 watts would generate approximately 11,400 watts, 3. If the capacity is higher, say 400 watts per panel, total output rises to 15,200 watts.

Average solar panel capacity typically ranges from 250 to 400 watts, 2. Thus, 38 panels rated at 300 watts would generate approximately 11,400 watts, 3. If the capacity is higher, say 400 watts per panel, total output rises to 15,200 watts.

To determine the total wattage produced by 38 solar panels, the wattage depends primarily on individual panel capacity. 1. Average solar panel capacity typically ranges from 250 to 400 watts, 2. Thus, 38 panels rated at 300 watts would generate approximately 11,400 watts, 3. If the capacity is.

About 97% of home solar panels installed in 2025 produce between 400 and 460 watts, based on thousands of quotes from the EnergySage Marketplace. But wattage alone doesn't tell the whole story. In fact, efficiency matters more than wattage when comparing solar panels—a higher wattage can simply.

Estimates the energy production of grid-connected photovoltaic (PV) energy systems throughout the world. It allows homeowners, small building owners, installers and manufacturers to easily develop estimates of the performance of potential PV installations. Operated by the Alliance for Sustainable.

The Solar Panel Output Calculator is a highly useful tool so you can understand the total output, production, or power generation from your solar panels per day, month, or year. Input your solar panel system's total size and the peak sun hours specific to your location, this calculator simplifies.

These days, the latest and best solar panels for residential properties produce between 250 and 400 Watts of electricity. While solar panel systems start at 1 KW and produce between 750 and 850 Kilowatt hour (KwH) annually, larger homes and bigger households typically want to be on the higher end.

Now, the amount of electricity in terms of kWh any solar panel will produce depends on only these two factors: Solar Panel Size (Wattage). Most common solar panel sizes include 100-watt, 300-watt, and 400-watt solar panels, for example.



The biggest the rated wattage of a solar panel, the more kWh. How much power does a solar panel produce?

The power rating of solar panels is in “Watts” or “Wattage,” which is the unit used to measure power production. These days, the latest and best solar panels for residential properties produce between 250 and 400 Watts of electricity.

What is solar panel wattage?

Solar panel wattage is the maximum amount of power a solar panel can produce under ideal conditions. It’s measured in watts (W) and represents the panel’s peak power output. For example, a 400-watt solar panel can generate up to 400 watts of electricity when exposed to full sunlight in a controlled test environment.

How much energy does a 400 watt solar panel produce?

A 400-watt solar panel will produce anywhere from 1.20 to 1.80 kWh per day (at 4-6 peak sun hours locations). The biggest 700-watt solar panel will produce anywhere from 2.10 to 3.15 kWh per day (at 4-6 peak sun hours locations). Let’s have a look at solar systems as well:.

How much power does a 500 watt solar panel produce?

How much power does a 500-watt solar panel produce per day?

Based on our energy output estimates for a location with five sunlight hours, a 500-watt solar panel would produce approximately 2.5 kWh: $500 \text{ watts} \times 5 \text{ hours} = 2,500 \text{ watts}$ OR approximately 2.5 kWh per day.



How many watts of power do 38 solar panels produce



[How Much Energy Does A Solar Panel Produce? , EnergySage](#)

About 97% of home solar panels installed in 2025 produce between 400 and 460 watts, based on thousands of quotes from the EnergySage Marketplace. But wattage alone ...

[Request Quote](#)

[How Much Power Does A Solar Panel Produce?](#)

Type of Panels Direction & Angle Efficiency Climate Sunlight Hours Solar panel efficiency, or how well panels convert sunlight into electricity, is the biggest factor determining how much electricity you can generate. The more efficient your panels are at converting sunlight into electricity, the more electricity you can generate for your home with the same amount of sunlight. See more on forbes The Green Watt



How Many kWh Does A Solar Panel Produce Per ...

Most common solar panel sizes include 100-watt, 300-watt, and 400-watt solar panels, for example. The biggest the rated wattage of a solar panel, ...

[Request Quote](#)

[How Much Power Does a Solar Panel Produce?](#)

Most residential solar panels produce electricity with 15% to 20% efficiency. Researchers are working toward models with up to 50% ...

[Request Quote](#)



[Solar Panel Wattage & Output Explained](#)

Most residential solar panels in 2025 are rated between 350W and 480W, while commercial modules can exceed 600W. How do manufacturers determine wattage? They test ...

[Request Quote](#)



[How Much Energy Does A Solar Panel Produce?](#)

If you're thinking about going solar, one of your biggest questions is likely: how much electricity can a solar panel actually ...

[Request Quote](#)

[Solar Panel Output Calculator , Get Maximum Power Output](#)

Use Solar Panel Output Calculator to find out the total output, production, or power generation from your solar panels per day, month, or in year.

[Request Quote](#)



[How Much Power Does A Solar Panel](#)



[Produce?](#)

These days, the latest and best solar panels for residential properties produce between 250 and 400 Watts of electricity. While solar panel systems start at 1 KW and produce between 750 and

[Request Quote](#)

PVWatts Calculator

NREL's PVWatts[®] Calculator Estimates the energy production of grid-connected photovoltaic (PV) energy systems throughout the world. It allows homeowners, small building owners, ...

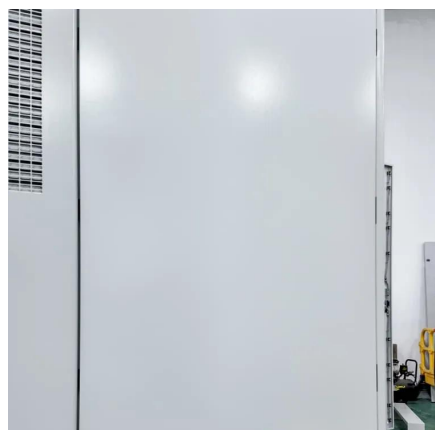
[Request Quote](#)



[How much power do solar panels produce? , Trinity Solar](#)

Most solar panels used in residential settings can produce between 300 W and 800 W per hour. Because of current technology and average peak sun hours, common residential solar panels ...

[Request Quote](#)



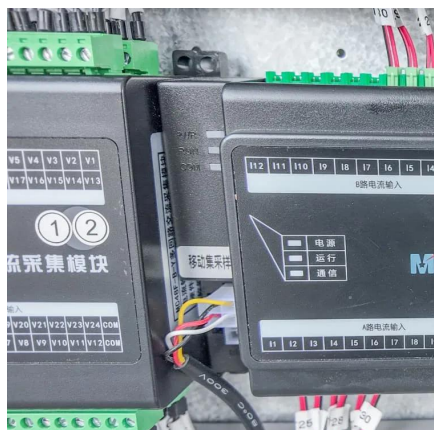
[How Much Energy Does A Solar Panel Produce?](#)

If you're thinking about going solar, one of your biggest questions is likely: how much electricity can a solar panel actually produce? This in-depth guide breaks down the ...

[Request Quote](#)



How many watts are 38 solar



panels?

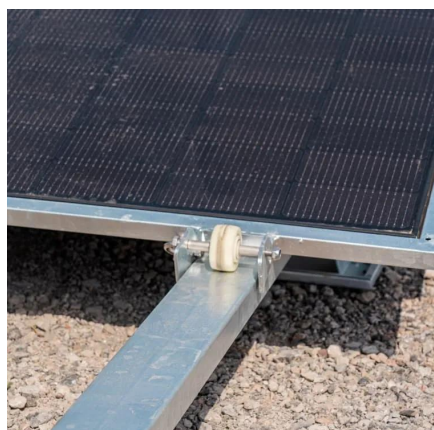
38 (number of panels) x 300 (individual wattage) = 11,400 watts. Conversely, if utilizing panels rated at 400 watts, the formidable total rises to 15,200 watts.

[Request Quote](#)

How many watts are 38 solar panels?

38 (number of panels) x 300 (individual wattage) = 11,400 watts. Conversely, if utilizing panels rated at 400 watts, the formidable ...

[Request Quote](#)



How Much Power Does a Solar Panel Produce?

Most residential solar panels produce electricity with 15% to 20% efficiency. Researchers are working toward models with up to 50% efficiency. The U.S. Department of ...

[Request Quote](#)

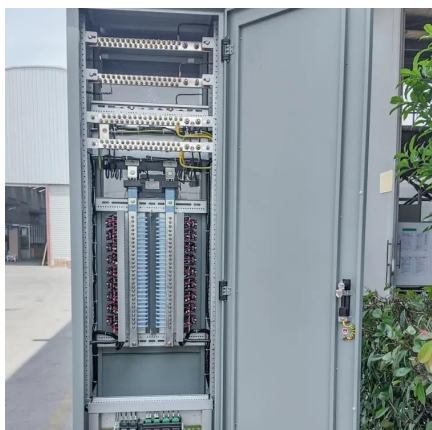
How Many kWh Does A Solar Panel Produce Per Day?

Most common solar panel sizes include 100-watt, 300-watt, and 400-watt solar panels, for example. The biggest the rated wattage of a solar panel, the more kWh per day it will produce.

[Request Quote](#)



[Solar Panel Output Calculator , Get](#)



[Maximum ...](#)

Use Solar Panel Output Calculator to find out the total output, production, or power generation from your solar panels per day, month, or ...

[Request Quote](#)



Contact Us

For catalog requests, pricing, or partnerships, please visit:

<https://www.energyinnovationday.pl>

Phone: +48 22 335 1273

Email: info@energyinnovationday.pl

Scan the QR code to contact us via WhatsApp.

