



How many watts of electricity does a solar street light use





Overview

A solar street light typically consumes between 10 to 80 watts, depending on its use case. For quiet residential paths, 10 to 20 watts might be enough. But when it comes to highways or industrial zones, you're likely looking at 60 watts or more.

A solar street light typically consumes between 10 to 80 watts, depending on its use case. For quiet residential paths, 10 to 20 watts might be enough. But when it comes to highways or industrial zones, you're likely looking at 60 watts or more.

How many watts does a solar street light calculate?

Solar street lights have become increasingly popular due to their efficient use of renewable energy, environmental benefits, and cost-saving potential. 1. The wattage for solar street lights varies depending on the application and design.

A solar street light typically consumes between 10 to 80 watts, depending on its use case. For quiet residential paths, 10 to 20 watts might be enough. But when it comes to highways or industrial zones, you're likely looking at 60 watts or more. The beauty is, unlike traditional street lights.

To choose the best solar street light, consider lumens per watt efficiency, battery capacity, solar panel quality, and installation environment. High-lumen LED chips, monocrystalline solar panels, MPPT charge controllers, and durable materials ensure long-lasting performance. Match brightness.

Solar street lights are an effective solution that rely on photovoltaic energy rather than drawing from the grid for electricity. But how much power do these systems actually consume?

And what type of performance can buyers expect?

This informative blog post dives into essential details surrounding.

The power consumption of solar street lights typically ranges from 15 to 100 watts, influenced by various factors including brightness requirements, design specifications, and geographical locations. 1. The majority of solar street lights are designed to optimize energy efficiency, ensuring.



The LED light source is the primary consumer of power in a solar battery street light. The power consumption of an LED is measured in watts. Higher - wattage LEDs generally produce more light but also consume more power. For example, a Solar Street Light 120w will consume 120 watts of power when it.



How many watts of electricity does a solar street light use



[How to Choose Solar LED Street Light: The ...](#)

Understanding the power consumption of a solar-powered street lighting system is the first step in determining the appropriate ...

[Request Quote](#)

How Much Power Does a Solar Street Light Use? (Watts, Energy, ...

A solar street light typically consumes between 10 to 80 watts, depending on its use case. For quiet residential paths, 10 to 20 watts might be enough. But when it comes to ...

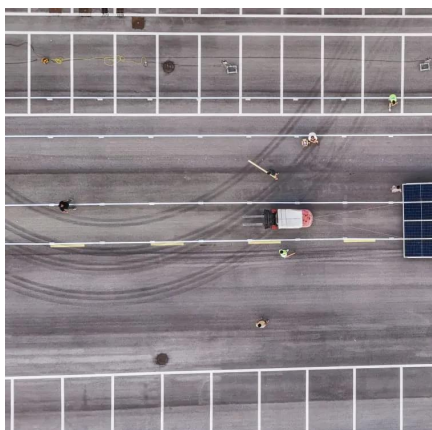
[Request Quote](#)



[What is the actual power of solar street lights?](#)

Many solar street lights on platforms like Amazon are marketed as 50W, 100W, or even higher, but these figures are typically inflated. In fact, the true power output of these lights often falls ...

[Request Quote](#)



[How many watts does an integrated solar street light have?](#)

75W to 120W: This is the common power range of solar street lights, suitable for different lighting needs and installation environments. 300W, 400W, 500W: These high-power solar street lights ...



[Request Quote](#)



[What is the actual power of solar street lights?](#)

Many solar street lights on platforms like Amazon are marketed as 50W, 100W, or even higher, but these figures are typically inflated. In fact, the ...

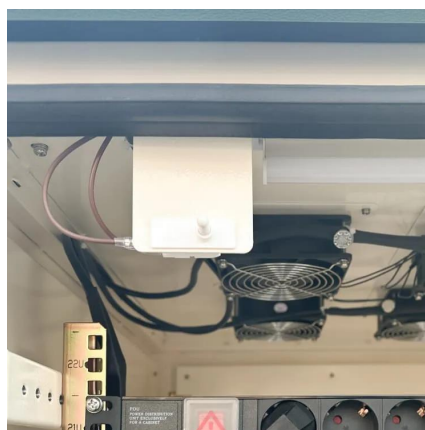
[Request Quote](#)



How many watts does a solar street light calculate? , NenPower

The typical wattage of solar street lights often falls between 15 and 150 watts. Smaller installations designed for pedestrian pathways frequently utilize approximately 15 to ...

[Request Quote](#)



What is the power consumption of a solar battery street light?

For example, a Solar Street Light 120w will consume 120 watts of power when it is operating at full brightness. However, modern LED technology has made significant ...

[Request Quote](#)



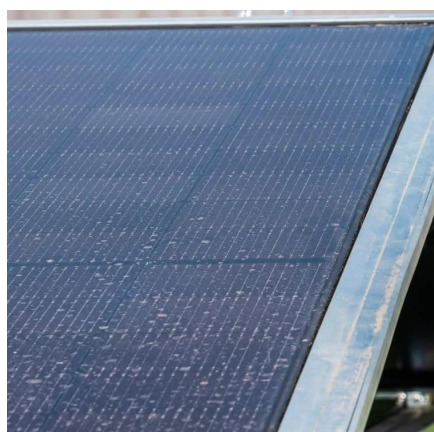
[How much power does a solar street light](#)



...

These solar street lights are designed for residential areas, pathways, or small parks, and typically have a power consumption rate ...

[Request Quote](#)



[How many watts does a solar street light usually use?](#)

How many watts does a solar street light usually use? The power consumption of solar street lights typically ranges from 15 to 100 watts, influenced by various factors including ...

[Request Quote](#)

Solar Street Light Power Explained: Beyond the Wattage Claims

One of the most common misconceptions about solar street lights is that higher wattage equals better performance. While wattage indicates the energy consumption of the ...

[Request Quote](#)



[How much power does a solar street light consume?](#)

These solar street lights are designed for residential areas, pathways, or small parks, and typically have a power consumption rate between 5 watts to 20 watts.

[Request Quote](#)



[How to Choose Solar LED Street Light: The](#)



[Ultimate Guide](#)

Understanding the power consumption of a solar-powered street lighting system is the first step in determining the appropriate specifications. The total energy consumption ...

[Request Quote](#)



[How many watts does solar street light normally use](#)

Light decay In order to reduce manufacturing costs, some street lamp manufacturers only use hundreds of 0.5W low-power LEDs. However, the light decay of this low-power LED is very ...

[Request Quote](#)



Contact Us

For catalog requests, pricing, or partnerships, please visit:

<https://www.energyinnovationday.pl>

Phone: +48 22 335 1273

Email: info@energyinnovationday.pl

Scan the QR code to contact us via WhatsApp.

