



How many watts does the 5g base station battery have





Overview

How much power does a 5G base station consume?

That's almost a threefold increase compared to 4G (5). One 5G base station is estimated to consume about as much power as 73 households (6), and 3x as much as the previous generation of base stations (5), (7).

How much power does 5G use?

The power consumption per unit of traffic (Watt/bit) is greatly decreased, but the power consumption of 5G increases greatly compared to that of 4G. Noticeably, in the 5G era, the maximum power consumption of a 64T64R AAU is 1000-1400 W, and that of a BBU is about 2000 W. Multiple bands in one site will be the typical configuration in the 5G era.

Are 5G base stations causing more energy consumption?

However, Li says 5G base stations are carrying five times the traffic as when equipped with only 4G, pushing up power consumption. The carrier is seeking subsidies from the Chinese government to help with the increased energy usage.

Is 5G more energy efficient than 4G?

Although the absolute value of the power consumption of 5G base stations is increasing, their energy efficiency ratio is much lower than that of 4G stations. In other words, with the same power consumption, the network capacity of 5G will be as dozens of times larger than 4G, so the power consumption per bit is sharply reduced.



How many watts does the 5g base station battery have



How much power does 5G consume?

One 5G base station is estimated to consume about as much power as 73 households (6), and 3x as much as the previous generation of base ...

[Request Quote](#)

How much power does 5G consume?

One 5G base station is estimated to consume about as much power as 73 households (6), and 3x as much as the previous generation of base stations (5), (7). When base stations, data centers ...

[Request Quote](#)



[How Much Power Does 5G Base Station Consume?](#)

The average 5G base station consumes 2.5-4 kW daily - equivalent to powering 40 refrigerators simultaneously. Three factors amplify this: Operators now spend 20-40% of ...

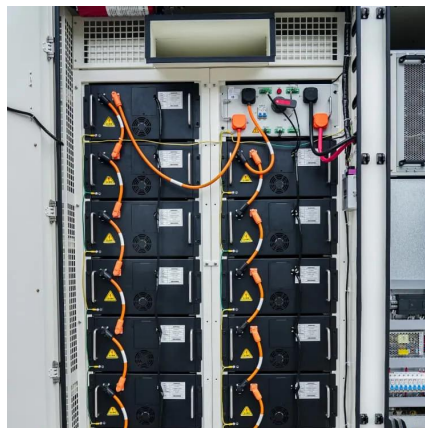
[Request Quote](#)

[5G Micro Base Station Lithium Battery Backup](#)

Built with LiFePO4 chemistry, it delivers long-lasting power for critical 5G infrastructure. Designed for telecom field deployment, remote tower locations, and small cell installations, this battery ...



[Request Quote](#)



Release Notes

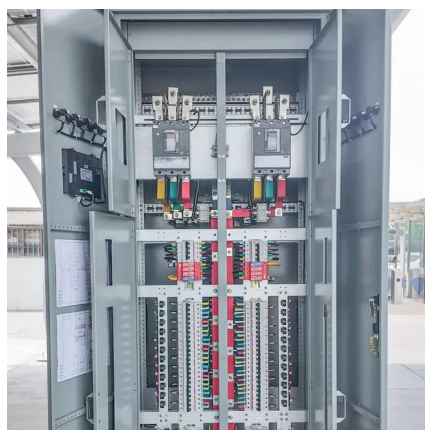
Noticeably, in the 5G era, the maximum power consumption of a 64T64R AAU is 1000-1400 W, and that of a BBU is about 2000 W. Multiple bands in one site will be the typical configuration ...

[Request Quote](#)

5G Base Station Lithium Battery: Capacity and Discharge Rate ...

EverExceed's high-rate discharge LiFePO4 batteries are engineered to handle these demanding conditions, ensuring stable and efficient power delivery to 5G infrastructure.

[Request Quote](#)



5G Base Station Energy Storage Battery Data: Powering the ...

As of 2025, over 15 million 5G base stations worldwide require energy storage solutions smarter than your average AA battery [5] [8]. Let's explore why these unsung heroes of connectivity ...

[Request Quote](#)

[5G Micro Base Station Lithium Battery](#)



[Backup](#)

Built with LiFePO4 chemistry, it delivers long-lasting power for critical 5G infrastructure. Designed for telecom field deployment, remote tower ...

[Request Quote](#)



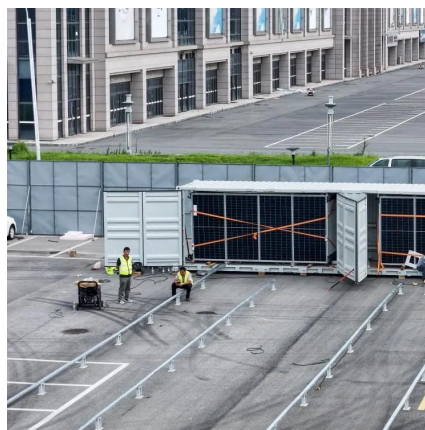
[5G base stations use a lot more energy than 4G ...](#)

A typical 5G base station consumes up to twice or more the power of a 4G base station, writes MTN Consulting Chief Analyst Matt ...

[Request Quote](#)



5G Base Station Power Supply



[Lithium Battery for 5G Base Stations Market](#)

A typical 5G base station consumes approximately 3.5-4 kW of power, nearly double that of 4G stations. Lithium batteries address this demand through superior energy density (150-200 ...

[Request Quote](#)



5G base stations use a lot more energy than 4G base stations: MTN

A typical 5G base station consumes up to twice or more the power of a 4G base station, writes MTN Consulting Chief Analyst Matt Walker in a new report entitled " Operators ...

[Request Quote](#)



System: NextG Power's Cutting ...

Discover NextG Power's 5G micro base station power solutions! Our IP65-rated 2000W/3000W modules and 48V 20Ah/50Ah LFP batteries ensure reliable connectivity.

[Request Quote](#)



[Front Line Data Study about 5G Power Consumption](#)

The power consumption of a single 5G station is 2.5 to 3.5 times higher than that of a single 4G station. The main factor behind this increase in 5G power consumption is the high power ...

[Request Quote](#)



Contact Us

For catalog requests, pricing, or partnerships, please visit:

<https://www.energyinnovationday.pl>

Phone: +48 22 335 1273

Email: info@energyinnovationday.pl

Scan the QR code to contact us via WhatsApp.

