



How many watts does a solar street light in the UK use





Overview

A solar street light typically consumes between 10 to 80 watts, depending on its use case. For quiet residential paths, 10 to 20 watts might be enough. But when it comes to highways or industrial zones, you're likely looking at 60 watts or more.

A solar street light typically consumes between 10 to 80 watts, depending on its use case. For quiet residential paths, 10 to 20 watts might be enough. But when it comes to highways or industrial zones, you're likely looking at 60 watts or more.

The power of solar street lights generally ranges from 10 watts to 100 watts, depending on factors such as the design of the street light, the required lighting intensity, and the efficiency of the solar panel. Here are some specific power ranges. [pdf] Are solar photovoltaic street lighting.

These solar street lights are designed for residential areas, pathways, or small parks, and typically have a power consumption rate between 5 watts to 20 watts. These solar street lights are designed for residential areas, pathways, or small parks, and typically have a power consumption rate.

On average, a standard solar street light with a 60-watt solar panel and a 40Ah battery can consume around 15-20 watts per hour. This means that a solar street light can produce enough energy to operate for up to 14 hours, depending on the amount of sunlight received during the day. On.

A solar street light typically consumes between 10 to 80 watts, depending on its use case. For quiet residential paths, 10 to 20 watts might be enough. But when it comes to highways or industrial zones, you're likely looking at 60 watts or more. The beauty is, unlike traditional street lights.

The amount of power consumed by a solar street light depends on a range of factors, such as the size of the solar panel, the capacity of the battery, and the brightness of the LED lights. On average, a standard solar street light with a 60-watt solar panel and a 40Ah battery can consume around.

Solar street lights vary significantly in wattage outputs, typically ranging from 15 to 100 watts, depending on the desired illumination level and specific application needs. 1. The brightness produced by solar street lights largely depends on the



wattage, with higher wattage allowing for increased.



How many watts does a solar street light in the UK use



[How much power does a solar street light consume?](#)

On average, a standard solar street light with a 60-watt solar panel and a 40Ah battery can consume around 15-20 watts per hour. This means that a solar street light can ...

[Request Quote](#)

[UNDERSTANDING STREET LIGHT POWER CONSUMPTION ...](#)

The power of solar street lights generally ranges from 10 watts to 100 watts, depending on factors such as the design of the street light, the required lighting intensity, and the efficiency of the ...

[Request Quote](#)



[How many watts of solar street light . NenPower](#)

Typically, solar street lights range from 15 watts to over 100 watts, depending on specific use cases. Factors like installation height and intended illumination area determine the ...

[Request Quote](#)



[How to Choose Solar LED Street Light: The Ultimate Guide](#)

Standard LED street lights typically offer 100-120 lm/W, but opt for models with at least 130-200 lm/W for superior performance. Higher lm/W values translate to better energy ...



[Request Quote](#)



[Solar powered street lighting - MMA Lighting Consultancy](#)

At MMA Lighting Consultancy Ltd we believe solar-powered street lighting can be sustainably used in the UK, but there are important considerations regarding technology, ...

[Request Quote](#)



[Solar Street Lighting Guide for the UK: Benefits](#)

In this guide, our experts who have worked on UK solar street light installations for the last six years, explore the power, sustainability, and adaptability of solar lighting solutions, ...

[Request Quote](#)



[How to Choose Solar LED Street Light: The ...](#)

Standard LED street lights typically offer 100-120 lm/W, but opt for models with at least 130-200 lm/W for superior performance. ...

[Request Quote](#)



[How many watts of solar street light .](#)



[NenPower](#)

Typically, solar street lights range from 15 watts to over 100 watts, depending on specific use cases. Factors like installation height ...

[Request Quote](#)



[A GUIDE TO SOLAR STREET LIGHTING IN THE UK](#)

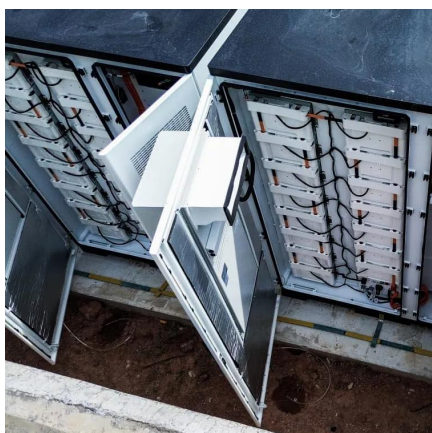
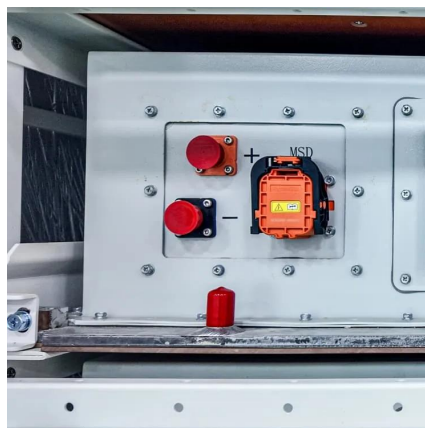
These solar street lights are designed for residential areas, pathways, or small parks, and typically have a power consumption rate between 5 watts to 20 watts..

[Request Quote](#)

[How many watts does a solar street light use?](#)

Discover the optimal wattage for your solar street light project. Learn about power consumption, efficiency factors, and cost savings. Expert analysis of residential to industrial ...

[Request Quote](#)



[UNDERSTANDING STREET LIGHT POWER CONSUMPTION IN THE UK](#)

The power of solar street lights generally ranges from 10 watts to 100 watts, depending on factors such as the design of the street light, the required lighting intensity, and the efficiency of the ...

[Request Quote](#)

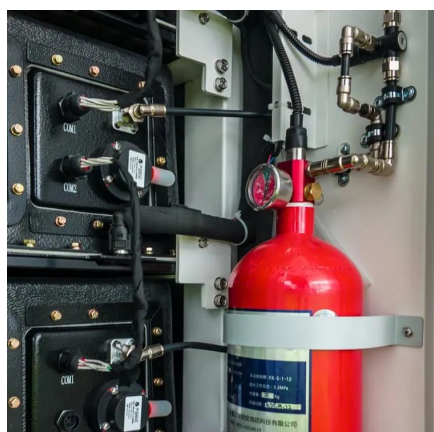
How Much Power Does a Solar Street



Light Use? (Watts, Energy, ...)

For quiet residential paths, 10 to 20 watts might be enough. But when it comes to highways or industrial zones, you're likely looking at 60 watts or more. The beauty is, unlike ...

[Request Quote](#)



[How many watts does a solar street light in the UK use](#)

How many watts should solar street lights be installed? Typical wattages for these solar lights range from 15 to 50 watts, offering adequate illumination while remaining cost-effective and ...

[Request Quote](#)



Contact Us

For catalog requests, pricing, or partnerships, please visit:

<https://www.energyinnovationday.pl>

Phone: +48 22 335 1273

Email: info@energyinnovationday.pl

Scan the QR code to contact us via WhatsApp.

