



How many volts is the low voltage of a 24 volt inverter





Overview

How much battery does a 24 volt inverter use?

For 24-volt inverters, it is 10 %. The battery capacity for a 12-volt Mass Sine 12/1200, for instance, is 240 Ah, while a 24-volt Mass Sine 24/1500 inverter would require at least 150 Ah. The indicated battery capacity is only for the inverter. The capacity required for other loads should be added to it. How much power does an inverter consume?

What voltage is a 12V inverter?

Inverters come in various configurations, each designed for specific power systems. Common rated input voltages include 12V, 24V, and 48V. The choice depends on the application, the size of the power system, and the available power source. A 12V inverter is commonly used for smaller applications, such as in vehicles or small off-grid setups.

What is a 24V power supply?

AC/AC -- The most common source of 24VAC you will find is the AC/AC wall mount power supply. This is a simple step-down low voltage transformer, with AC mains voltage input and 24VAC output . It is inexpensive because there are no other active or passive components (other than possibly a fuse).

How much power does an inverter use?

An inverter uses a small amount of energy during the conversion process. The difference between the input power and the output power is expressed in percentages. The efficiency of modern inverters is more than 92 %. This means that a maximum of 8 % of the power consumption is used to convert battery voltage to 230V/50Hz.



How many volts is the low voltage of a 24 volt inverter



Understanding inverter voltage

Low output inverter voltage can stem from issues such as a weak battery, loose connections, or internal faults. Thoroughly troubleshooting these aspects can help identify and ...

[Request Quote](#)

What voltage should 24 volt inverter shut off at?

1.75 volts per cell is the low voltage cut off point for all UPS battery systems. this is equal to 21 volts for a 24 volt system. Every system I have ever been involved with uses this ...

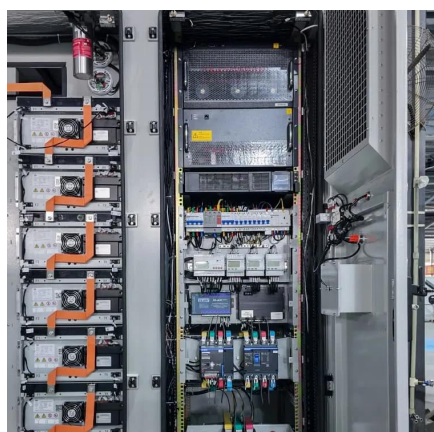
[Request Quote](#)



Inverter Battery Voltage: How Many Volts Are Needed For ...

Home backup power systems typically require 12 volts, 24 volts, or 48 volts, depending on the size and application of the system. A common choice for residential use is ...

[Request Quote](#)



24V Battery Voltage Chart (Understanding

...

Our 24V battery voltage chart below gives you an indication of the voltage of your 24V battery at various battery percentages. Have a look to ...

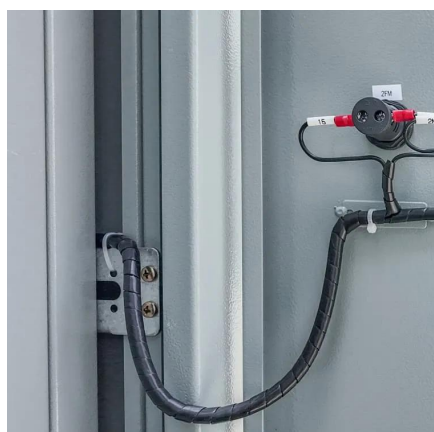
[Request Quote](#)



[24V Battery Voltage Chart \(Understanding Voltage\)](#)

Our 24V battery voltage chart below gives you an indication of the voltage of your 24V battery at various battery percentages. Have a look to understand how the voltage changes slightly over ...

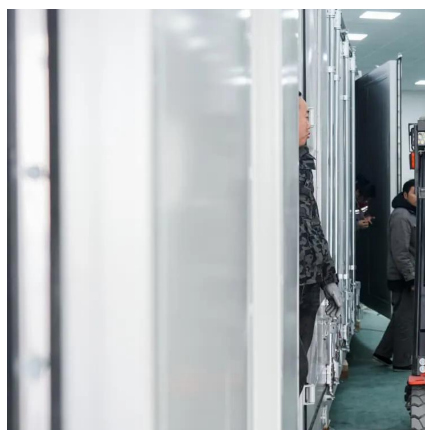
[Request Quote](#)



24VAC tutorial and FAQ for irrigation, security, HVAC and control ...

If you draw more current the voltage will sag, if you draw less then the voltage will increase. Furthermore, the mains voltage can typically vary by $\pm 10\%$ depending how far you ...

[Request Quote](#)



[A comprehensive guide to inverter voltage](#)

The inverter start voltage is the minimum input voltage required for the inverter to start the conversion process. The startup ...

[Request Quote](#)



Low battery voltage cut off



Low Voltage Cut Out default to 21 volts, why? Just installed a Schneider Electric SW4024 inverter in my 24V off grid system and don't want to damage my batteries (24 6V ...

[Request Quote](#)



What is the under

This is crucial because if the inverter operates at a very low voltage, it can cause damage to the inverter itself and also the connected devices. For a 24 Volt 220v Inverter, the under - voltage ...

[Request Quote](#)

Inverter Battery Voltage Chart

If the voltage falls to about 12.0 volts, it's nearing a low state of charge, indicating that recharging is necessary. Understanding these voltage characteristics helps you determine ...

[Request Quote](#)



[A comprehensive guide to inverter voltage](#)

The inverter start voltage is the minimum input voltage required for the inverter to start the conversion process. The startup voltage can vary depending on the design and model ...

[Request Quote](#)



[Frequently asked questions about](#)



[inverters , Mastervolt](#)

As a rule of thumb you should divide the connected capacity by 10 for 12 volt and by 20 for 24 volt. This also includes all the power losses in the cables, fuses and the inverter.

[Request Quote](#)



24VAC tutorial and FAQ for irrigation, security, HVAC and control ...

If the voltage falls to about 12.0 volts, it's nearing a low state of charge, indicating that recharging is necessary. Understanding these ...

[Request Quote](#)



Contact Us

For catalog requests, pricing, or partnerships, please visit:

<https://www.energyinnovationday.pl>

Phone: +48 22 335 1273

Email: info@energyinnovationday.pl

Scan the QR code to contact us via WhatsApp.

