



How many kilowatts of inverter do 24kw solar panels require





Overview

Generally, it's recommended to size the inverter to 80-100% of the DC system's rated capacity. Before determine the inverter size, the most important thing is to calculate your average daily power consumption (kWh) and calculate your solar panel array size to match your power.

Generally, it's recommended to size the inverter to 80-100% of the DC system's rated capacity. Before determine the inverter size, the most important thing is to calculate your average daily power consumption (kWh) and calculate your solar panel array size to match your power.

Generally, it's recommended to size the inverter to 80-100% of the DC system's rated capacity. Before determine the inverter size, the most important thing is to calculate your average daily power consumption (kWh) and calculate your solar panel array size to match your power consumption. You could.

Inverter: one or two inverters of a combined 10 kW–15 kW A 12 kW solar installation in a farm near Berlin utilized a 10 kW inverter with excellent results—saving a couple of hundred dollars on initial cost and still registering peak output. 3. Equate Load Requirements, Not Panel Watts It's not.

Find out how many solar panels, batteries, and inverter capacity you need for your off-grid solar system. Going solar doesn't have to be confusing. This free DIY solar calculator makes it simple to estimate the size of your solar array, the number of panels, battery storage, and the inverter.

A solar inverter should closely match your solar system's output in kW—typically within 80% to 120% of your total panel capacity. Too big = wasted money. Too small = wasted energy What Is a Solar Inverter and Why Does Size Matter?

Swap out old appliances for energy-efficient ones to cut down your.

How to Calculate Your Solar Inverter Size?

Inverters have two important power ratings: continuous power rating and peak power rating. The continuous power rating is the sustained amount of power the inverter can convert from DC to AC electricity. On the other hand, the peak power



rating is the.



How many kilowatts of inverter do 24kw solar panels require



[How to Choose the Right Size Solar Inverter: Step ...](#)

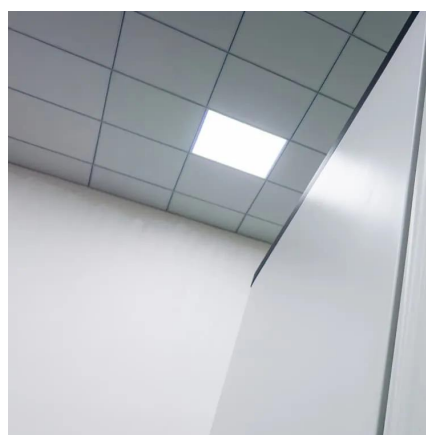
This guide walks you through calculating inverter size based on panel capacity, power usage, and safety margins. We use real ...

[Request Quote](#)

[Inverter Size Calculator - self2solar](#)

Determining the correct inverter size depends on your solar array's capacity and your household's power needs. Generally, the inverter should be sized to match about ...

[Request Quote](#)



[How To Size A Solar Inverter in 3 Easy Steps](#)

Most homes have an average daily consumption of between 9 to 20 kW. Depending on where they fall in that band and the size of their solar array, they will likely use a 3, 5, or 10kW ...

[Request Quote](#)



[How to Calculate Solar Panel, Battery, and Inverter Size](#)

In general, your inverter capacity should be approximately the same size as the total wattage of your solar panels. This ensures that the inverter operates at its most efficient ...



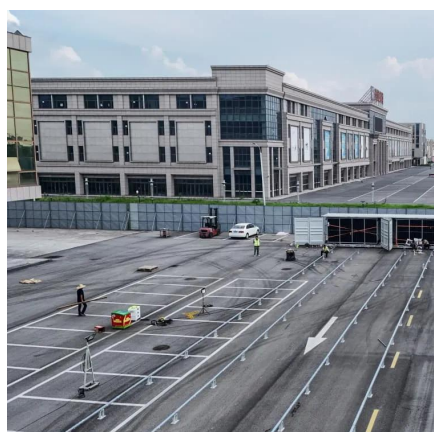
[Request Quote](#)



[calculate inverter size for solar + Sizing Formula](#)

Most solar inverters, including brands like the Growatt hybrid inverter, come in discrete sizes measured in terms of single or multiple kilowatts (kW). Common sizes range ...

[Request Quote](#)



Solar System Size Calculator: Estimate Panels, Inverter, and ...

Inverters are rated in watts (W) or kilowatts (kW), indicating their capacity to handle power. Our solar inverters are designed to efficiently convert DC to AC, ensuring maximum ...

[Request Quote](#)



[Solar System Size Calculator: Estimate Panels, ...](#)

Inverters are rated in watts (W) or kilowatts (kW), indicating their capacity to handle power. Our solar inverters are designed to ...

[Request Quote](#)



[Solar Panel Inverter Size Calculator: What](#)



[Size Do I Need?](#)

What Solar Panel Inverter Size Do I Need? Your solar power inverter needs to handle the output of your solar panels. For this reason, you should choose a solar inverter ...

[Request Quote](#)



[What Size Solar Inverter Do I Need? Experts Break It Down](#)

What Size Solar Inverter Do I Need? A solar inverter should closely match your solar system's output in kW--typically within 80% to 120% of your total panel capacity.

[Request Quote](#)

[Solar Panel Inverter Size Calculator: What Size Do ...](#)

What Solar Panel Inverter Size Do I Need? Your solar ...

[Request Quote](#)



[Inverter Size Calculator - self2solar](#)

Determining the correct inverter size depends on your solar array's capacity and your household's power needs. Generally, the ...

[Request Quote](#)

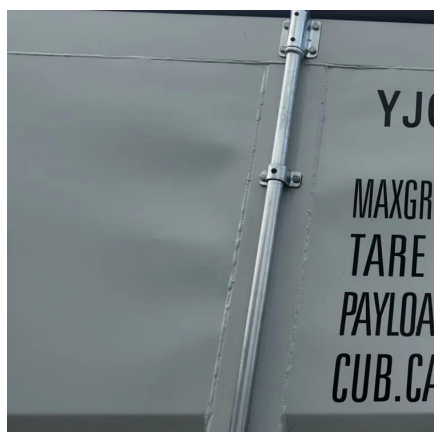
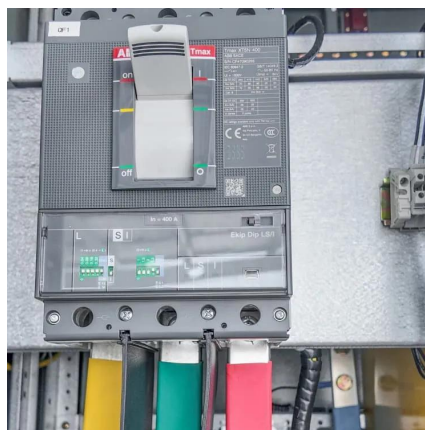
How to Choose the Right Size Solar



Inverter: Step-by-Step with ...

This guide walks you through calculating inverter size based on panel capacity, power usage, and safety margins. We use real examples from installations in Texas and ...

[Request Quote](#)



[Solar Inverter Sizing Guide: How to Size Your Inverter](#)

Your inverter needs to handle that 6kW of DC power, regardless of whether your home uses 2kW or 10kW at any given moment. The grid and your electrical panel manage the ...

[Request Quote](#)

[DIY Solar Calculator: Size Panels, Batteries & Inverter](#)

Find out how many solar panels, batteries, and inverter capacity you need for your off-grid solar system. Going solar doesn't have to be confusing. This free DIY solar calculator ...

[Request Quote](#)





Contact Us

For catalog requests, pricing, or partnerships, please visit:

<https://www.energyinnovationday.pl>

Phone: +48 22 335 1273

Email: info@energyinnovationday.pl

Scan the QR code to contact us via WhatsApp.

