



# How many kilowatts does the wall-mounted solar power have





## Overview

---

Most residential panels in 2025 are rated 250–550 watts, with 400-watt models becoming the new standard. A 400-watt panel can generate roughly 1.6–2.5 kWh of energy per day, depending on local sunlight. To cover the average U.S. household's 900 kWh/month consumption, you typically.

Most residential panels in 2025 are rated 250–550 watts, with 400-watt models becoming the new standard. A 400-watt panel can generate roughly 1.6–2.5 kWh of energy per day, depending on local sunlight. To cover the average U.S. household's 900 kWh/month consumption, you typically.

How much power does a wall mounted solar panel have?

To determine the power output of a wall-mounted solar panel, several key factors play a significant role. 1. The type of solar panel utilized, 2. The amount of sunlight received, 3. The angle and positioning of the panel, 4. The efficiency.

Most residential panels in 2025 are rated 250–550 watts, with 400-watt models becoming the new standard. A 400-watt panel can generate roughly 1.6–2.5 kWh of energy per day, depending on local sunlight. To cover the average U.S. household's 900 kWh/month consumption, you typically need 12–18.

Every solar panel has a wattage rating — typically between 350 and 450 watts for modern residential models. This rating has grown over time, so older panels may produce less electricity, depending on age. The wattage rating tells you the maximum power the panel can produce under Standard Test.

Residential solar panels typically produce between 250 and 400 watts per hour—enough to power a microwave oven for 10–15 minutes. As of 2020, the average U.S. household uses around 30 kWh of electricity per day or approximately 10,700 kWh per year. Most residential solar panels produce electricity.

About 97% of home solar panels installed in 2025 produce between 400 and 460 watts, based on thousands of quotes from the EnergySage Marketplace. But wattage alone doesn't tell the whole story. In fact, efficiency matters more than wattage when comparing solar panels—a higher wattage can simply.



Wall-mounted solar panels or photovoltaic systems can vary significantly in wattage output based on several factors including size, efficiency, and specific use-case. 1. The average wattage of wall-mounted solar panels typically ranges from 250 to 400 watts per panel;; 2. The overall power.



## How many kilowatts does the wall-mounted solar power have



### [How Much Energy Does A Solar Panel Produce?](#)

Most residential panels in 2025 are rated 250-550 watts, with 400-watt models becoming the new standard. A 400-watt panel can generate roughly 1.6-2.5 kWh of energy ...

[Request Quote](#)

### [How many watts are wall mounted solar panels?](#)

Wall-mounted solar panels or photovoltaic systems can vary significantly in wattage output based on several factors including size, ...

[Request Quote](#)



### [How Much Energy Does A Solar Panel Produce?](#)

Most residential panels in 2025 are rated 250-550 watts, with 400-watt models becoming the new standard. A 400-watt panel can ...

[Request Quote](#)



### [How much power does a wall mounted solar panel have?](#)

The power output generated by a wall-mounted solar panel varies depending on numerous pivotal factors, including the type of solar technologies employed, the positioning ...



[Request Quote](#)



### Powerwall 3 Datasheet

Powerwall 3 achieves this by supporting up to 20 kW DC of solar and providing up to 11.5 kW AC of continuous power per unit. It has the ability to start heavy loads rated up to 185 LRA, ...

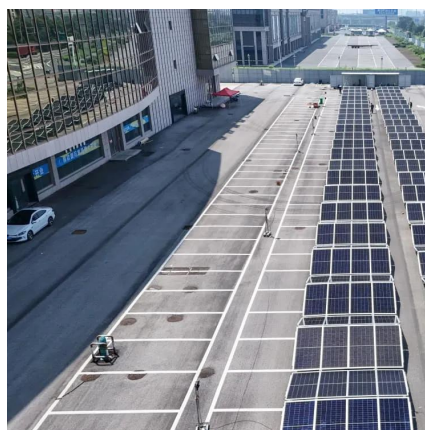
[Request Quote](#)



### [How Much Power Does a Solar Panel Produce?](#)

You'll need between 15 and 22 solar panels to cover your home's electricity usage. Note: These costs are based on EnergySage ...

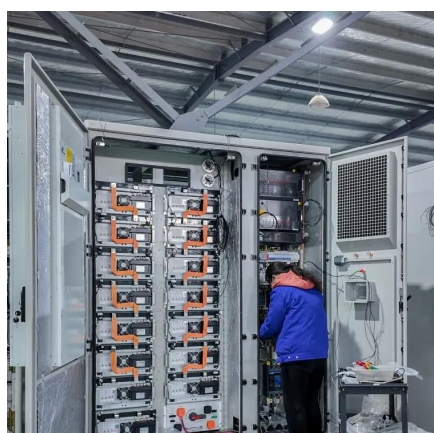
[Request Quote](#)



### [How Much Energy Does A Solar Panel Produce? , EnergySage](#)

You'll need between 15 and 22 solar panels to cover your home's electricity usage. Note: These costs are based on EnergySage Marketplace data.

[Request Quote](#)



### [How Much Power Does A Solar Panel](#)



## [Produce?](#)

These days, the latest and best solar panels for residential properties produce between 250 and 400 Watts of electricity. While solar panel ...

[Request Quote](#)



## [How Efficient Are Wall-Mounted Solar Panels? - ...](#)

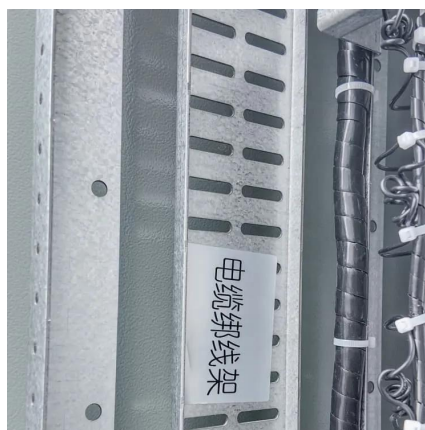
Energy Yield Compared to Roof-Mounted Arrays. When mounted vertically (90° tilt), wall arrays typically produce around 695 kWh ...

[Request Quote](#)

## [How much power does a wall mounted solar panel ...](#)

The power output generated by a wall-mounted solar panel varies depending on numerous pivotal factors, including the type of solar ...

[Request Quote](#)



## [How Much Power Does A Solar Panel Produce?](#)

These days, the latest and best solar panels for residential properties produce between 250 and 400 Watts of electricity. While solar panel systems start at 1 KW and produce between 750 and

[Request Quote](#)

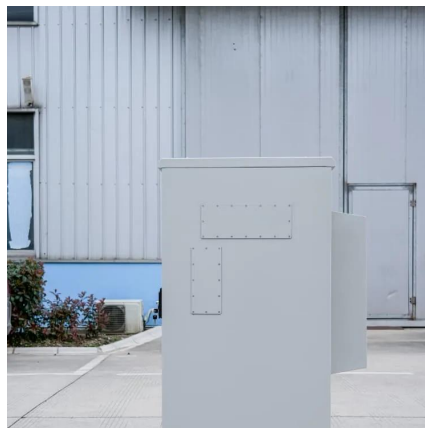
## [How many watts are wall mounted solar](#)



## [panels? , NenPower](#)

Wall-mounted solar panels or photovoltaic systems can vary significantly in wattage output based on several factors including size, efficiency, and specific use-case.

[Request Quote](#)



## [Solar Panel Output: How Much Power Can You ...](#)

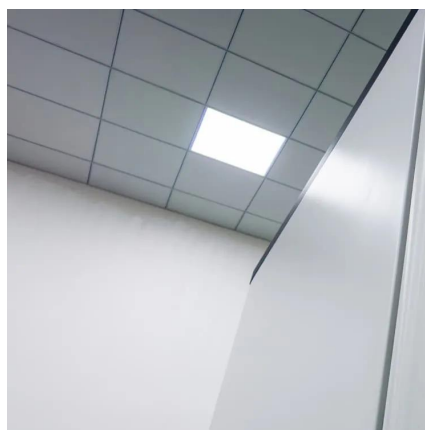
Every solar panel has a wattage rating -- typically between 350 and 450 watts for modern residential models. This rating has grown ...

[Request Quote](#)

## [How Much Electricity Does a Solar Panel Produce?](#)

Most residential panels today range between 350 and 450 watts, with efficiency reaching up to 22%. A high-efficiency, 400-watt panel will produce more electricity than a 350-watt one, even ...

[Request Quote](#)



## [How Much Electricity Does a Solar Panel Produce?](#)

Most residential panels today range between 350 and 450 watts, with efficiency reaching up to 22%. A high-efficiency, 400-watt ...

[Request Quote](#)

## [How Much Power Does a Solar Panel](#)



## [Produce?](#)

Energy usage is measured in kilowatt-hours (kWh), or the number of kilowatts an appliance needs for one hour. A residential solar panel typically produces between 250 and ...

[Request Quote](#)



## [How Efficient Are Wall-Mounted Solar Panels? - AHODSOLAR](#)

Energy Yield Compared to Roof-Mounted Arrays. When mounted vertically (90° tilt), wall arrays typically produce around 695 kWh per kWp annually, about 29-30% less than ...

[Request Quote](#)

## [Solar Panel Output: How Much Power Can You Expect?](#)

Every solar panel has a wattage rating -- typically between 350 and 450 watts for modern residential models. This rating has grown over time, so older panels may produce less ...

[Request Quote](#)





## Contact Us

---

For catalog requests, pricing, or partnerships, please visit:

<https://www.energyinnovationday.pl>

Phone: +48 22 335 1273

Email: [info@energyinnovationday.pl](mailto:info@energyinnovationday.pl)

Scan the QR code to contact us via WhatsApp.

