



How many inverters are suitable for 12v120ah





Overview

To determine the appropriate inverter size for a 200Ah battery, consider the following: A 500VA inverter would be suitable, offering a balance between performance and battery life. For extended run times, consider larger inverters or additional batteries to meet higher power demands.

To determine the appropriate inverter size for a 200Ah battery, consider the following: A 500VA inverter would be suitable, offering a balance between performance and battery life. For extended run times, consider larger inverters or additional batteries to meet higher power demands.

As a rule of thumb, the minimum required battery capacity for a 12-volt system is around 20 % of the inverter capacity. For 24-volt inverters, it is 10 %. The battery capacity for a 12-volt Mass Sine 12/1200, for instance, is 240 Ah, while a 24-volt Mass Sine 24/1500 inverter would require at least.

Assuming a 12V battery: $Wh = 200 \text{ Ah} \times 12 \text{ V} = 2400 \text{ Wh}$ Thus, a 200 Ah battery at 12 volts has a capacity of 2400 watt-hours. This metric is vital for determining how long a battery can power specific devices and for evaluating the overall energy storage capabilities. Want OEM lithium forklift batteries at.

The Calculate Battery Size for Inverter Calculator helps you determine the optimal battery capacity needed to support your inverter system. By inputting critical parameters such as power consumption, inverter efficiency, and desired usage time, this calculator provides a precise battery size.

$12\text{V} \times 100\text{Ah} = 1200\text{Wh}$ (or 1.2kWh) This figure tells you how much energy needs to be replenished. Daily Consumption and Charging Time If you want to fully recharge your battery in one day, your solar array must generate at least the equivalent wattage used—plus losses (typically ~20%). This directly.

Our Solar Inverter and Battery Sizing Calculator provides a simple and user-friendly solution. It is much easier to use and more convenient. Here, you can make a list of possible setups. Why is this sizing calculation essential?

First, you can use your electronic gadgets in your home with.



In general, a 12V inverter is designed to work with one or more 12V batteries connected in parallel. Assuming a 12V battery: $Wh = 200 \text{ Ah} \times 12 \text{ V} = 2400 \text{ Wh}$ Thus, a 200 Ah battery at 12 volts has a capacity of 2400 watt-hours. This metric is vital for determining how long a battery can power specific.



How many inverters are suitable for 12v120ah



Best Sized Inverter For 12 Volt Battery [Updated On: December ...

Inverter Types: Different inverter types serve different needs. Pure sine wave inverters provide clean energy that is suitable for sensitive electronics, while modified sine ...

[Request Quote](#)

[How Many Batteries Can Be Connected to a 12V Inverter?](#)

The number of batteries you can connect to an inverter cannot exceed 12 times the charging current of the inverter. For example, a 20A charger can handle a maximum of ...

[Request Quote](#)



[How Many Batteries Can Be Connected to a 12V ...](#)

The number of batteries you can connect to an inverter cannot exceed 12 times the charging current of the inverter. For example, ...

[Request Quote](#)

[Calculate Battery Size for Inverter Calculator](#)

By inputting critical parameters such as power consumption, inverter efficiency, and desired usage time, this calculator provides a precise battery size recommendation ...



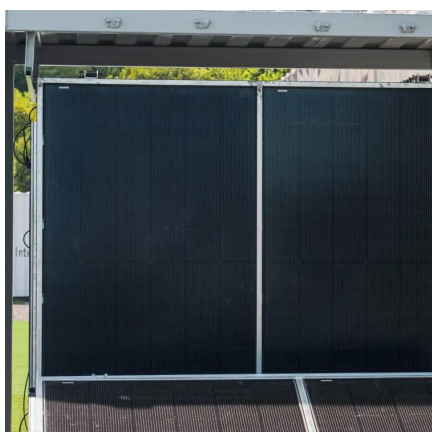
[Request Quote](#)



[Understanding Battery Capacity and Inverter Compatibility](#)

A 500VA inverter would be suitable, offering a balance between performance and battery life. For extended run times, consider larger inverters or additional batteries to meet ...

[Request Quote](#)



[How Big of an Inverter Can My Car Battery Handle?](#)

This guide is designed to help you make an informed choice about how much power you can use from your car's battery to power an inverter, taking into account a number ...

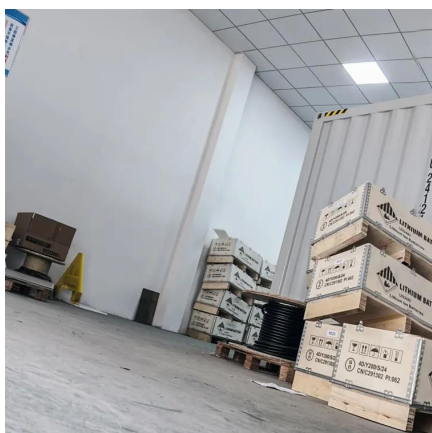
[Request Quote](#)



[Best Sized Inverter For 12 Volt Battery \[Updated ...\]](#)

Inverter Types: Different inverter types serve different needs. Pure sine wave inverters provide clean energy that is suitable for ...

[Request Quote](#)



[How Big of an Inverter Can My Car Battery](#)



[Handle?](#)

This guide is designed to help you make an informed choice about how much power you can use from your car's battery to power an ...

[Request Quote](#)



[How Much Battery Capacity Do You Need With a 12V Inverter?](#)

Discover how to calculate the ideal battery capacity for a 12V inverter using simple math, practical examples, and money-saving tips for daily power.

[Request Quote](#)



[Frequently Asked Questions about](#)



[Solar Inverter & Battery Sizing Calculator](#)

LuxpowerTek solar inverter and battery Sizing Calculator are simple and easy to understand. All you need to do is enter the information about your setup. Later, the tool will ...

[Request Quote](#)



[Solar Inverter & Battery Sizing Calculator](#)

LuxpowerTek solar inverter and battery Sizing Calculator are simple and easy to understand. All you need to do is enter the information ...

[Request Quote](#)



[Inverters](#)

As a rule of thumb, the minimum required battery capacity for a 12-volt system is around 20 % of the inverter capacity. For 24-volt inverters, it is 10 %. The battery capacity for a 12-volt Mass ...

[Request Quote](#)



[Calculate Battery Size for Inverter Calculator](#)

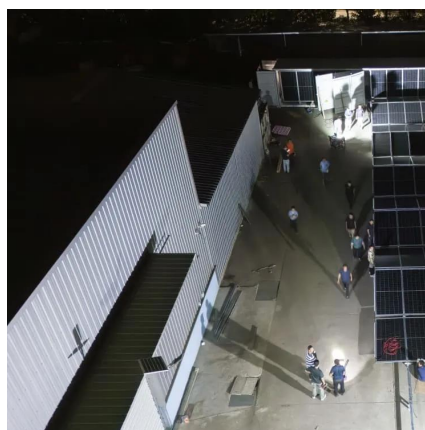
By inputting critical parameters such as power consumption, inverter efficiency, and desired usage time, this calculator provides a ...

[Request Quote](#)

Determining the Solar and Inverter Size Needed to Charge a Battery

To calculate the Size of your solar array, you first need to know your battery bank's capacity, usually expressed in amp-hours (Ah) and voltage (V). For example: $12V \times 100Ah = \dots$

[Request Quote](#)



[Determining the Solar and Inverter Size Needed to ...](#)

To calculate the Size of your solar array, you first need to know your battery bank's capacity, usually expressed in amp-hours (Ah) and ...

[Request Quote](#)

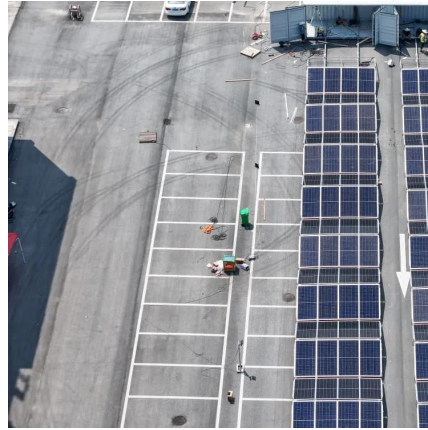
[How many inverters can I use for 12v](#)



[120ah](#)

The Calculate Battery Size for Inverter Calculator helps you determine the optimal battery capacity needed to support your inverter system. By inputting critical parameters such as ...

[Request Quote](#)





Contact Us

For catalog requests, pricing, or partnerships, please visit:

<https://www.energyinnovationday.pl>

Phone: +48 22 335 1273

Email: info@energyinnovationday.pl

Scan the QR code to contact us via WhatsApp.

