



How many C discharges does the 21700 battery support





Overview

The 21700 battery supports a discharge rate of 3.75C, which means a 5000 mAh cell can output a current of 18.75A.

The 21700 battery supports a discharge rate of 3.75C, which means a 5000 mAh cell can output a current of 18.75A.

Large Capacity Guaranteed .

Engineered with high-rate lithium cells, this compact battery pack delivers instant surge power (6C+ discharge)—ideal for AGVs, power tools, and heavy-duty equipment facing extreme loads or frequent startups. 3.7V 8Ah 21700 battery packs deliver reliability in high-power environments. Max. Charge.

If you're looking for a high-performance lithium-ion battery solution for industrial equipment, power tools, or energy storage systems, the 21700 battery is undoubtedly an indispensable core option. 1. What Exactly Is a 21700 Battery?

The 21700 battery gets its name from its physical dimensions: 21.

1. General : Diameter 21.55mm max Length 2. Performance Charge at 3A, Cut off current 600mA, Discharge at 10A, 2.5V cut off, at room temperature.

At its core, a single 21700 cell usually holds 4000–5000 mAh with a nominal voltage of 3.6–3.7 V. Fully charged, it hits 4.2 V, and cutoff usually happens around 3.0 V. In practice, I've seen these cells hold up better under high current draw compared to 18650. Less heat, less sag, and more usable.

The 21700 battery is a cylindrical lithium-ion battery with a diameter of 21mm and a length of 70mm. It offers a nominal voltage of 3.7V and a capacity of up to 5,000mAh, making it a powerful and efficient energy source. Its energy density ranges between 250 Wh/kg and 300 Wh/kg, depending on the.



How many C discharges does the 21700 battery support



The Rise of the 21700 Battery Pack, What You Really Need to ...

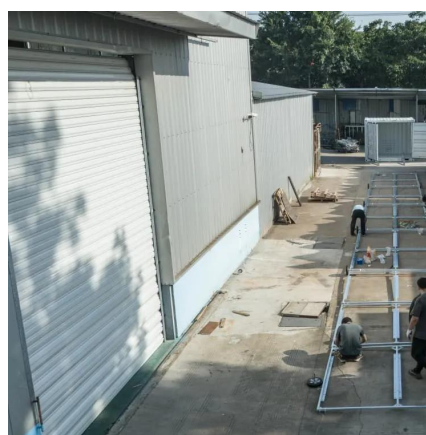
Some are optimized for high capacity (great for long runtime), while others are tuned for high discharge rates (better for power-hungry tools or drones). There's a fun discussion I came ...

[Request Quote](#)

[3.7V 8Ah 21700 Battery Pack for High Discharge Power Tools](#)

Engineered with high-rate lithium cells, this compact battery pack delivers instant surge power (6C+ discharge)--ideal for AGVs, power tools, and heavy-duty equipment facing extreme ...

[Request Quote](#)



[21700 Battery Guide: Specs, Capacity, Lifespan & Best Uses](#)

The 21700 battery supports a discharge rate of 3.75C, which means a 5000 mAh cell can output a current of 18.75A. This high discharge rate feature makes it perfectly suitable ...

[Request Quote](#)



[3.7V 8Ah 21700 Battery Pack for High Discharge ...](#)

Engineered with high-rate lithium cells, this compact battery pack delivers instant surge power (6C+ discharge)--ideal for AGVs, power tools, and ...



[Request Quote](#)



The Rise of the 21700 Battery Pack, What You Really Need to Know

Some are optimized for high capacity (great for long runtime), while others are tuned for high discharge rates (better for ...

[Request Quote](#)

[Product Specifications Document No: 50/352](#)

Density 270 Wh / Kg Cell Dimensions C. rs Initial Internal Impedance [Request Quote](#)



21700 Battery: A Complete Guide

With proper care, a 21700 battery can last between 3 to 6 years, typically with 300 to 500 charge/discharge cycles, offering longevity ...

[Request Quote](#)

[Exploring the 21700 Battery: Your](#)



[Ultimate Guide](#)

To put it into perspective, a typical 21700 battery can store 5,000mAh of charge, whereas the more common 18650 battery typically ...

[Request Quote](#)



21700 Battery: A Complete Guide

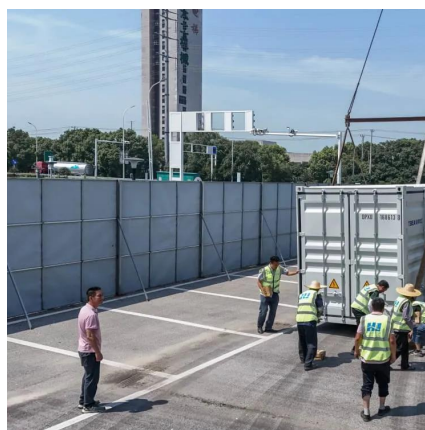
With proper care, a 21700 battery can last between 3 to 6 years, typically with 300 to 500 charge/discharge cycles, offering longevity and reliable performance over time.

[Request Quote](#)

[Lithium Ion Rechargeable Battery Technical Information](#)

Charge at 3A, Cut off current 600mA, Discharge at 10A, 2.5V cut off, at room temperature.

[Request Quote](#)



[Understanding the 21700 Battery and Its](#)

...

The 21700 battery operates at a nominal voltage of 3.7V, with a full charge voltage of 4.2V and a discharge cutoff voltage of 3.0V. This ...

[Request Quote](#)

NCR21700datasheet



Low Temp. Characteristics for NCR21700 [20A discharge] 4.5 4.0 3.5 Charge :CC-CV:2A - 4.2V(100mA cut) at 25°C Discharge:CC: 20 A to 2.5V at 25°C,10°C,0°C,-10°C 80

[Request Quote](#)



[Exploring the 21700 Battery: Your Ultimate Guide](#)

To put it into perspective, a typical 21700 battery can store 5,000mAh of charge, whereas the more common 18650 battery typically holds between 2,500mAh to 3,500mAh. ...

[Request Quote](#)



[21700 Battery Features, Types, Dimensions, & Uses](#)

High-drain 21700 battery has a high current of more than 30 amps without any bad effect on battery working life, and low-drain 21700 battery is not discharged with more than 5 ...

[Request Quote](#)



[Understanding the 21700 Battery and Its Specifications](#)

The 21700 battery operates at a nominal voltage of 3.7V, with a full charge voltage of 4.2V and a discharge cutoff voltage of 3.0V. This voltage range aligns with industry ...

[Request Quote](#)



[21700 Battery Features, Types, Dimensions, & Uses](#)



[Dimensions, & Uses](#)

High-drain 21700 battery has a high current of more than 30 amps without any bad effect on battery working life, and low-drain 21700 ...

[Request Quote](#)





Contact Us

For catalog requests, pricing, or partnerships, please visit:

<https://www.energyinnovationday.pl>

Phone: +48 22 335 1273

Email: info@energyinnovationday.pl

Scan the QR code to contact us via WhatsApp.

