



How long does it take to fully charge the base station battery





Overview

Most Base Station batteries can take anywhere from 2 to 8 hours to fully charge, based on their size and how depleted they were prior to charging. Additionally, using the right charger designed specifically for the battery can optimize charging efficiency and ensure safety.

Most Base Station batteries can take anywhere from 2 to 8 hours to fully charge, based on their size and how depleted they were prior to charging. Additionally, using the right charger designed specifically for the battery can optimize charging efficiency and ensure safety.

If your Boston Scientific Spinal Cord Stimulator (SCS) uses a rechargeable battery, you will use your charging system to recharge the battery as needed. The charging system includes a charger unit, a base station, and a power supply. The base station is designed to remain connected to a power.

A Base Station backup battery typically lasts 4 to 12 hours depending on usage and can take 2 to 8 hours to fully charge. The actual performance can vary based on factors like battery health and environmental conditions. Regular maintenance and using the correct charger can enhance battery lifespan.

Before diving into the charging time, it's essential to understand the battery's specifications and general performance. The Astro A50 is equipped with: Capacity: Approximately 15 hours of battery life from a full charge. These specifications help to gauge how often you'll need to charge the.

How long your Base battery lasts depends on four main factors: How much power you use: This is the most important factor. A battery stores a fixed amount of energy when the grid is down, so running high-usage devices (like A/C or laundry machines) will shorten backup time, just like a bigger water.

Check the battery level: Before charging your A50s, check the battery level to determine how long it will take to fully charge. You can check the battery level by looking at the LED indicator on the headset. If the LED is flashing red, it means that the battery is low and needs to be charged.

Base batteries deploy energy to the grid faster than any other service, which is



how Base is able to recoup the cost of the battery equipment and keep prices low for homeowners. The charge level of your Base battery will naturally fluctuate over time, rising and falling throughout a multi-day.



How long does it take to fully charge the base station battery



[How the Base battery works: A complete guide to grid ...](#)

Base batteries run in two directions, which is how Base is able to keep costs low for homeowners. The batteries charge during off-peak hours, like midday and late at night, when energy is more ...

[Request Quote](#)

[How to Charge Your Astro A50s? A Quick and ...](#)

To charge your A50s, simply place them onto the base station. The base station has indicator lights that show the charging status of the ...

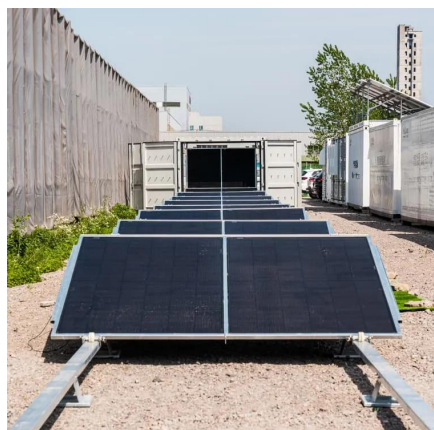
[Request Quote](#)



Charging your SCS system

It usually takes between 4 and 7 business days for the order to be delivered. My charger isn't lighting up when I press the center button. What do I do? ...

[Request Quote](#)



[How to Charge Your Astro A50s? A Quick and Easy Guide](#)

To charge your A50s, simply place them onto the base station. The base station has indicator lights that show the charging status of the headset. When the headset is fully ...



[Request Quote](#)



[How long do I need to charge the Cala kIQ system?](#)

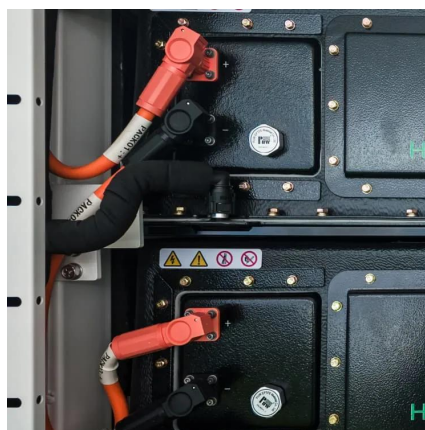
How long do I need to charge the Cala kIQ system? It is recommended that you place your stimulator with the band attached into the base station overnight to charge. At a low battery ...

[Request Quote](#)

Power Supply & Battery

The official 9V/2A adapter is strongly recommended for the charging station. Because a 9V/2A output is strong enough for the charging station to achieve quick charge, and the official ...

[Request Quote](#)



Vercise™ DBS Charging Handbook

You should expect a daily recharging time of 15 to 30 minutes or a periodic recharging time of 3 to 4 hours every 1 to 2 weeks. Your recharge routine may vary depending on your stimulation ...

[Request Quote](#)

How long will the Base Station



backup battery last, and how long ...

Most Base Station batteries can take anywhere from 2 to 8 hours to fully charge, based on their size and how depleted they were prior to charging. Additionally, using the right ...

[Request Quote](#)



[How the Base battery works: A complete guide to ...](#)

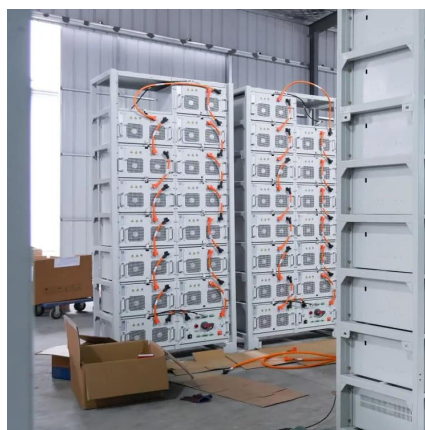
Base batteries run in two directions, which is how Base is able to keep costs low for homeowners. The batteries charge during off-peak hours, like ...

[Request Quote](#)

How long will the Base Station backup battery last, and how long does

Most Base Station batteries can take anywhere from 2 to 8 hours to fully charge, based on their size and how depleted they were prior to charging. Additionally, using the right ...

[Request Quote](#)



[4 Best Ways on How to Charge/Recharge a ...](#)

To charge a portable power station, you can mainly use four types of outlets - home outlets, car outlets, solar panels and a generator. ...

[Request Quote](#)

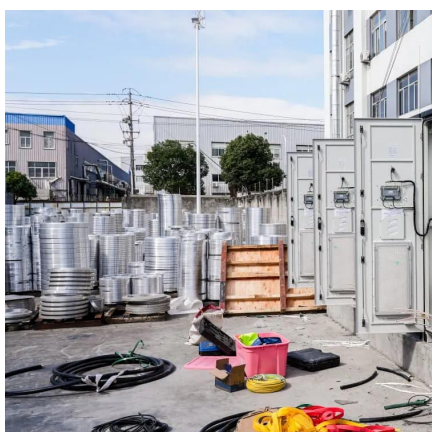
Understanding the Charging Time of



the Astro A50 Battery: What ...

The Astro A50 battery typically takes around 4 to 6 hours to fully charge when placed on its base station. This time frame may vary slightly based on the charging condition ...

[Request Quote](#)



Charging your SCS system

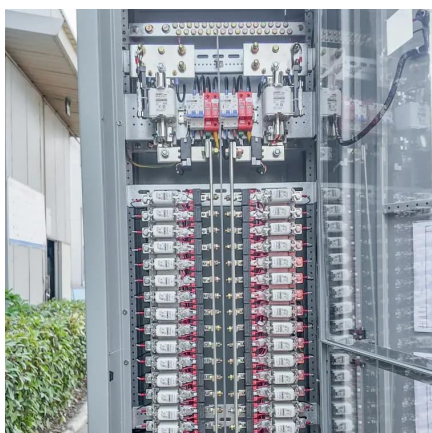
It usually takes between 4 and 7 business days for the order to be delivered. My charger isn't lighting up when I press the center button. What do I do? Ensure that the power supply is fully ...

[Request Quote](#)

4 Best Ways on How to Charge/Recharge a Portable Power Station

To charge a portable power station, you can mainly use four types of outlets - home outlets, car outlets, solar panels and a generator. Let's take a look at each one in turn. The ...

[Request Quote](#)



[How long does your Base battery last during an outage?](#)

You should always have at least 5 hours (if you have a single battery) or 10 hours (if you have two batteries) of backup at low energy usage during normal operations.

[Request Quote](#)



Contact Us

For catalog requests, pricing, or partnerships, please visit:

<https://www.energyinnovationday.pl>

Phone: +48 22 335 1273

Email: info@energyinnovationday.pl

Scan the QR code to contact us via WhatsApp.

