



How high off the ground should the solar inverter be installed





Overview

Solar panels often require a height ranging from 18 to 36 inches above the ground, depending on site-specific factors. The terrain's topography may also influence decisions, as slopes and uneven landscapes necessitate tailored solutions. 1. UNDERSTANDING SITE SELECTION CRITERIA.

Solar panels often require a height ranging from 18 to 36 inches above the ground, depending on site-specific factors. The terrain's topography may also influence decisions, as slopes and uneven landscapes necessitate tailored solutions. 1. UNDERSTANDING SITE SELECTION CRITERIA.

A proper solar inverter installation is the backbone of a well-functioning photovoltaic (PV) setup. Without it, even the highest-quality solar panels can underperform or fail altogether. This guide dives deep into the real-world do's and don'ts of solar inverter installation, helping homeowners.

As I delve deeper into the world of solar energy, I've realized that the placement of the inverter is a critical decision that can have far-reaching implications. It's not just about aesthetics or convenience - it's about optimizing the efficiency and longevity of my entire solar system. According.

To determine the appropriate elevation for solar installations, the surface must be elevated enough to avoid obstructions, 1, ensure adequate water drainage, 2, and accommodate structural stability. The ideal height can vary extensively based on geographical location, local climate conditions, and.

Inverter placement optimization is crucial for solar developers as it significantly enhances the performance and longevity of solar energy systems by ensuring that inverters are installed in optimal locations, considering factors like temperature, accessibility, and sunlight exposure. The article.

Yes, solar inverters can be installed outdoors. Many modern solar inverters are designed to be waterproof, dustproof, and weather-resistant to various weather conditions. When installing, avoid exposing them to excessive sunlight or high temperatures. It is best to choose a shaded area and ensure.

SolarEdge inverters can be installed indoors or outdoors, side by side, one above



the other, or in a diagonal layout. To allow proper heat dissipation and prevent power reduction due to excessive temperature, ensure sufficient air circulation and maintain minimum clearance areas between the.



How high off the ground should the solar inverter be installed



[How to Optimize Inverter Placement: A Step-by ...](#)

Inverter placement optimization is crucial for solar developers as it significantly enhances the performance and longevity of solar energy ...

[Request Quote](#)

[Where Does a Solar PV Inverter be Installed?](#)

When installing outdoors, the PV inverter should be equipped with rain-proof sunscreen, avoiding direct sunlight and rain. Measures ...

[Request Quote](#)



Where to put a solar inverter

With ground mounting, you can place your solar inverter at a lower height, which can be beneficial for easily reaching and maintaining ...

[Request Quote](#)

[Can Solar Inverters Be Installed Outside?](#)

Inverters generate heat during operation, so they must be installed in a well-ventilated area to prevent overheating. Avoid placing ...

[Request Quote](#)



[Inverter Placement Tips for Curb Appeal](#)

Discover optimal inverter placement to maintain your home's curb appeal while ensuring efficient solar energy conversion.

[Request Quote](#)



Where to put a solar inverter

With ground mounting, you can place your solar inverter at a lower height, which can be beneficial for easily reaching and maintaining the unit. This option allows for enhanced ...

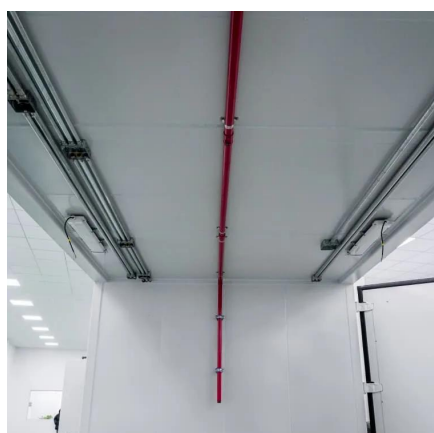
[Request Quote](#)



[Where Does a Solar PV Inverter be Installed? , inverter](#)

When installing outdoors, the PV inverter should be equipped with rain-proof sunscreen, avoiding direct sunlight and rain. Measures should be taken to avoid exposing the ...

[Request Quote](#)



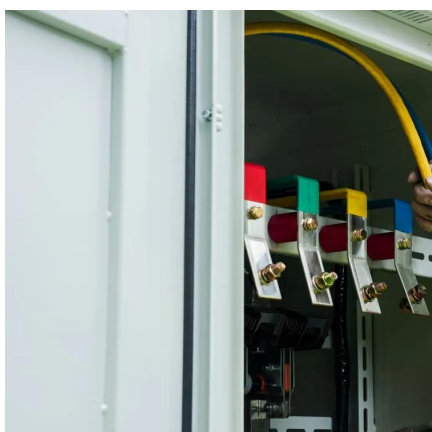
How to Optimize Inverter Placement:



A Step-by-Step Guide for Solar

Inverter placement optimization is crucial for solar developers as it significantly enhances the performance and longevity of solar energy systems by ensuring that inverters ...

[Request Quote](#)



Inverter Placement: Key Considerations for Your Solar Installation

According to the solar experts on Reddit, there are some key factors to consider when deciding on the inverter's location. For one, the garage option can provide better ...

[Request Quote](#)

Can Solar Inverters Be Installed Outside?

Inverters generate heat during operation, so they must be installed in a well-ventilated area to prevent overheating. Avoid placing the inverter in direct sunlight or enclosed ...

[Request Quote](#)



Best location for inverter , Inside vs outside? Warranty issues?

As per the CEC guidelines, around 1% AC voltage drop/rise is recommended from the inverter to the point of connection. The voltage drop is directly proportional to the wire length and ...

[Request Quote](#)

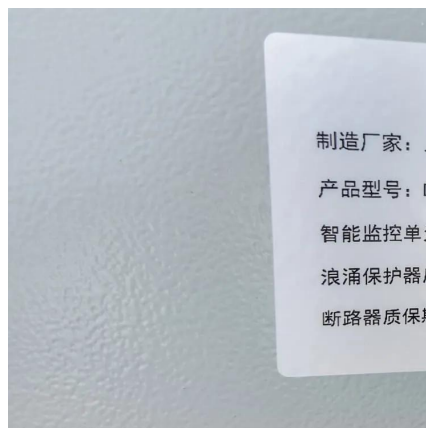
How high is the ground for solar



[installation?](#)

Solar panels often require a height ranging from 18 to 36 inches above the ground, depending on site-specific factors. The terrain's ...

[Request Quote](#)



[How high is the ground for solar installation? , NenPower](#)

Solar panels often require a height ranging from 18 to 36 inches above the ground, depending on site-specific factors. The terrain's topography may also influence decisions, as ...

[Request Quote](#)

[Clearance Guidelines for Mounting Three Phase Inverters](#)

SolarEdge inverters can be installed indoors or outdoors, side by side, one above the other, or in a diagonal layout. To allow proper heat dissipation and prevent power reduction due to ...

[Request Quote](#)



[Best location for inverter , Inside vs outside?](#)

As per the CEC guidelines, around 1% AC voltage drop/rise is recommended from the inverter to the point of connection. The voltage drop is directly ...

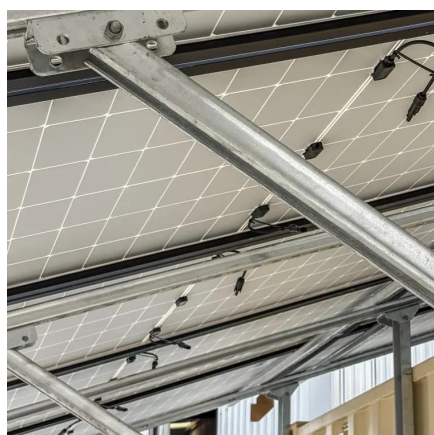
[Request Quote](#)

[Inverter Placement Tips for Curb Appeal](#)



Discover optimal inverter placement to maintain your home's curb appeal while ensuring efficient solar energy conversion.

[Request Quote](#)



Solar Inverter Installation: Best Practices and Common Mistakes

Discover expert tips on solar inverter installation, avoid costly mistakes, and learn how to size, place, and install your inverter for peak solar efficiency.

[Request Quote](#)



Contact Us

For catalog requests, pricing, or partnerships, please visit:

<https://www.energyinnovationday.pl>

Phone: +48 22 335 1273

Email: info@energyinnovationday.pl

Scan the QR code to contact us via WhatsApp.

