



How high are home solar lights usually installed





Overview

A pole height of around 4–5 meters, with spacing of about 15–30 meters, usually provides gentle and uniform illumination. This height keeps the beam low, so light stays focused on the street and sidewalk. Lower poles also reduce light pollution — great for residential peace and.

A pole height of around 4–5 meters, with spacing of about 15–30 meters, usually provides gentle and uniform illumination. This height keeps the beam low, so light stays focused on the street and sidewalk. Lower poles also reduce light pollution — great for residential peace and.

Selecting the correct pole height for a solar street light is a critical decision that balances illumination needs, cost, and safety. The height directly impacts the area of coverage, the intensity of the light, and the pole's structural stability.¹ This guide provides a breakdown of common pole.

Determining the appropriate height for installing a solar LED light pole is a crucial decision that significantly impacts the lighting efficiency, coverage area, and overall aesthetic appeal of a given space. As a leading solar LED light pole supplier, we understand the importance of this decision.

Determining the height of solar lights varies depending on their design and intended application. 1. Most solar lights range from 24 to 72 inches in height, 2. The average height for residential solar garden lights is about 30 to 40 inches, 3. Pathway lights often stand at around 24 inches, and 4.

Too high?

The light might spread too thin, leaving your road dim. So, how tall is just right?

Let's walk through the logic together, so by the end, you'll know exactly what height works for your road, path, or parking lot. Why Solar Light Pole Height Matters?

The height of a solar light pole is.

Determining the spacing and height of solar street lights requires comprehensive

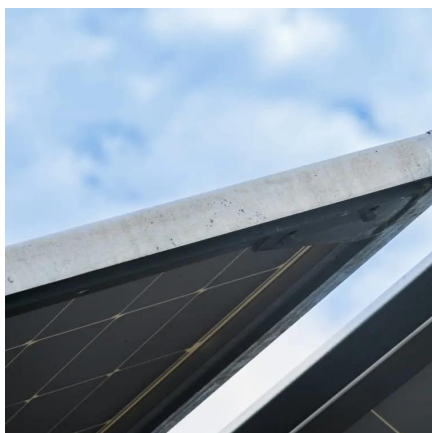


consideration of lighting requirements, road types, lamp power, beam angles, installation positions, and many other factors. As an experienced and innovative premium supplier, Shinetoo will explain these aspects in.

When installing solar street lights, one of the most critical factors to consider is the appropriate installation height. The height at which you install the lights can significantly affect their performance, coverage area, and the overall effectiveness of your lighting system. Whether you're.



How high are home solar lights usually installed



[What Is The Best Solar Light Pole Height? A ...](#)

Pole height depends on the type of road or area you're lighting. Let's go through the main categories one by one: Why: These ...

[Request Quote](#)

How to choose the right installation height for solar street lights

Like parking lots, highways and other areas that require high brightness and uniformity of light, it is more appropriate to install solar street lights at a height of 10 to 12 meters.

[Request Quote](#)



New York Solar Guidebook

Solar electric systems convert the energy in sunlight into electrical current, which can power electric loads, be fed back to the electric grid, or be stored in batteries. All solar electric ...

[Request Quote](#)



[Installing Outdoor Solar Lights: 4 Placement Tips](#)

Learn placement tips for your solar lights including placement height, common obstructions, maximizing sunlight, pre-charging your panels, and more with help from a ...



[Request Quote](#)



What Is The Best Solar Light Pole Height? A Practical Guide by ...

Pole height depends on the type of road or area you're lighting. Let's go through the main categories one by one: Why: These are calm, slow-traffic areas like neighborhood ...

[Request Quote](#)

[What is the height of the solar lights? , NenPower](#)

Most solar lights range from 24 to 72 inches in height, 2. The average height for residential solar garden lights is about 30 to 40 inches, ...

[Request Quote](#)



[What is the height of the solar lights? , NenPower](#)

Most solar lights range from 24 to 72 inches in height, 2. The average height for residential solar garden lights is about 30 to 40 inches, 3. Pathway lights often stand at around ...

[Request Quote](#)



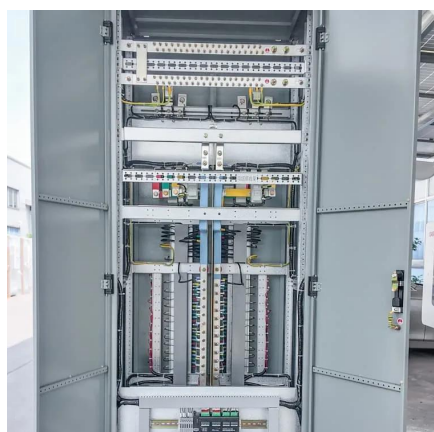
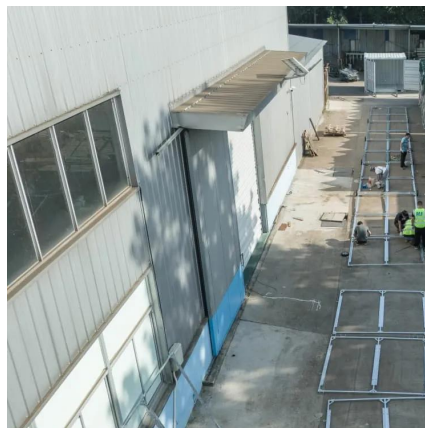
How to determine the spacing and



height of solar street lights

Street light height is 8-12 meters, with a spacing of 25-40 meters depending on road width. Single-sided, symmetrical, or staggered layouts can be used. Street light height is ...

[Request Quote](#)



A Quick Guide to Solar Street Light Pole Heights and Their Uses

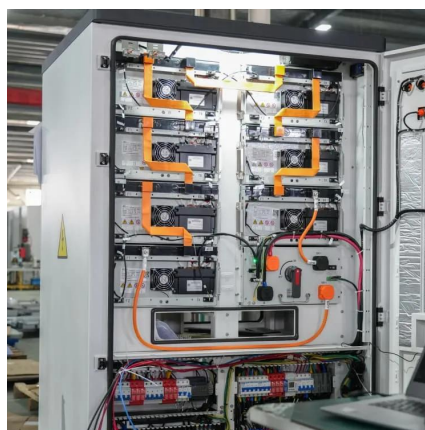
Since they are shorter, they require a lower lumen output (typically 1,500 - 3,000 lumens) and a smaller solar panel and battery, making them highly cost-effective and easy to ...

[Request Quote](#)

[How high should a solar led light pole be installed?](#)

In residential driveways, sidewalks, and gardens, solar LED light poles with heights ranging from 2 to 4 meters are commonly used. These shorter poles provide sufficient ...

[Request Quote](#)



How To Choose The Right Installation Height For Solar Street Lights

The installation height of solar street lights also influences how well the light is distributed. For areas requiring bright, focused illumination (like parking lots or highways), a ...

[Request Quote](#)

What is the installation height



standard for solar panel street light

There are several factors that determine the ideal installation height for solar panel street light poles. Residential Areas: In residential areas, the main goal is to provide sufficient ...

[Request Quote](#)



[How To Choose The Right Installation Height For ...](#)

The installation height of solar street lights also influences how well the light is distributed. For areas requiring bright, focused ...

[Request Quote](#)



Contact Us

For catalog requests, pricing, or partnerships, please visit:

<https://www.energyinnovationday.pl>

Phone: +48 22 335 1273

Email: info@energyinnovationday.pl

Scan the QR code to contact us via WhatsApp.

