



How fast does the flywheel energy storage rotate





Overview

The speed of flywheel energy storage typically operates at high rotational speeds ranging from 10,000 to 100,000 revolutions per minute (RPM), depending on the design and application. Flywheel technology utilizes kinetic energy stored in a rotating mass to maintain power output.

The speed of flywheel energy storage typically operates at high rotational speeds ranging from 10,000 to 100,000 revolutions per minute (RPM), depending on the design and application. Flywheel technology utilizes kinetic energy stored in a rotating mass to maintain power output.

Flywheel energy storage (FES) works by spinning a rotor (flywheel) and maintaining the energy in the system as rotational energy. When energy is extracted from the system, the flywheel's rotational speed is reduced as a consequence of the principle of conservation of energy; adding energy to the.

High-speed flywheels- made from composite materials like carbon fiber and fiberglass, typically operate at speeds between 20,000 and 60,000 revolutions per minute (RPM) and can store energy for a few seconds to a few minutes. They are commonly used for short-term energy storage applications such as.

Flywheel Energy Storage Systems (FESS) rely on a mechanical working principle: An electric motor is used to spin a rotor of high inertia up to 20,000-50,000 rpm. Electrical energy is thus converted to kinetic energy for storage. For discharging, the motor acts as a generator, braking the rotor to.

What is the speed of the flywheel energy storage?

The speed of flywheel energy storage typically operates at high rotational speeds ranging from 10,000 to 100,000 revolutions per minute (RPM), depending on the design and application. Flywheel technology utilizes kinetic energy stored in a rotating.

A flywheel energy storage system is a mechanical device used to store energy through rotational motion. When excess electricity is available, it is used to accelerate a flywheel to a very high speed. The energy is stored as kinetic energy and can be retrieved by slowing down the flywheel.



By capturing energy through the rotation of a flywheel and delivering it quickly when needed, systems based on flywheel energy storage promise long lifetimes, very high cycle frequencies, and minimal capacity degradation. This article explores the fundamentals, applications, economics and future of.



How fast does the flywheel energy storage rotate



Flywheel energy storage

Flywheel energy storage (FES) works by accelerating a rotor (flywheel) to a very high speed and maintaining the energy in the system as rotational energy.

[Request Quote](#)

[What is the speed of the flywheel energy storage?](#)

The speed of flywheel energy storage typically operates at high rotational speeds ranging from 10,000 to 100,000 revolutions per ...

[Request Quote](#)



[A Review of Flywheel Energy Storage System Technologies](#)

This article comprehensively reviews the key components of FESSs, including flywheel rotors, motor types, bearing support technologies, and power electronic converter ...

[Request Quote](#)



[FESS Flywheel Energy Storage Systems](#)

High-speed flywheels- made from composite materials like carbon fiber and fiberglass, typically operate at speeds between 20,000 and 60,000 revolutions per minute (RPM) and can store ...

[Request Quote](#)



[Flywheel Energy Storage System: What Is It and ...](#)

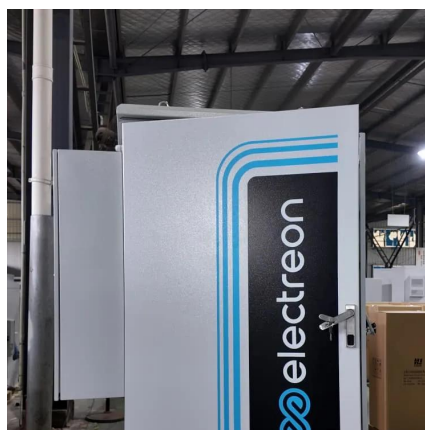
Energy Storage: The flywheel continues to spin at high speed, maintaining energy as long as friction and resistance are minimized. The longer it ...

[Request Quote](#)

[FESS Flywheel Energy Storage Systems](#)

High-speed flywheels- made from composite materials like carbon fiber and fiberglass, typically operate at speeds between 20,000 and 60,000 ...

[Request Quote](#)



Technology: Flywheel Energy Storage

Flywheel Energy Storage Systems (FESS) rely on a mechanical working principle: An electric motor is used to spin a rotor of high inertia up to 20,000-50,000 rpm.

[Request Quote](#)

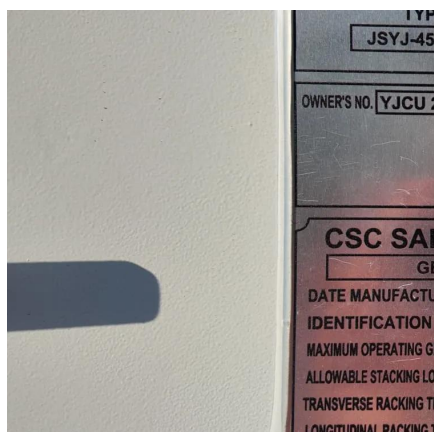


How flywheel energy storage works



principle of rotating mass causes energy to store in a flywheel by converting electrical energy into mechanical energy in the form of rotational kinetic energy. 39 The energy fed to an FESS is ...

[Request Quote](#)



What is the speed of the flywheel energy storage? , NenPower

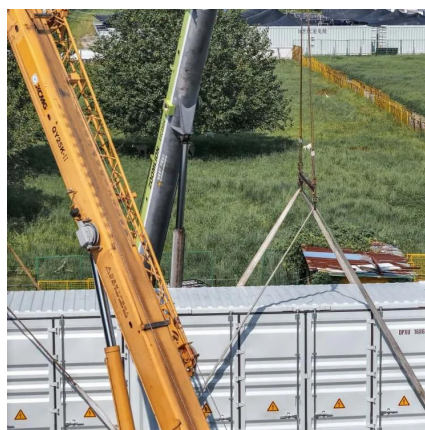
The speed of flywheel energy storage typically operates at high rotational speeds ranging from 10,000 to 100,000 revolutions per minute (RPM), depending on the design and ...

[Request Quote](#)

Flywheel Energy Storage System: What Is It and How Does It ...

Energy Storage: The flywheel continues to spin at high speed, maintaining energy as long as friction and resistance are minimized. The longer it spins, the more energy it holds, similar to ...

[Request Quote](#)



Flywheel energy storage

Advanced FES systems have rotors made of high strength carbon-fiber composites, suspended by magnetic bearings, and spinning at speeds from 20,000 to over 50,000 rpm in a vacuum ...

[Request Quote](#)

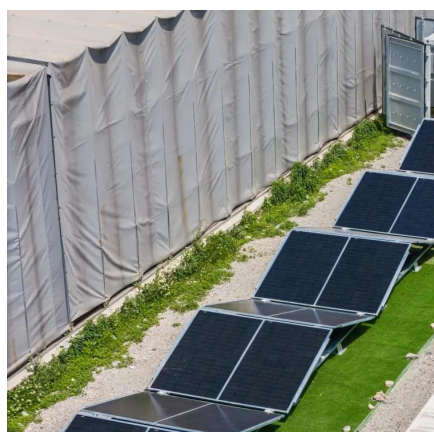
[A Review of Flywheel Energy Storage](#)



[System ...](#)

This article comprehensively reviews the key components of FESSs, including flywheel rotors, motor types, bearing support ...

[Request Quote](#)



Flywheel Energy Storage Guide

Flywheel energy storage is a technology that stores energy kinetically in a rotating mass. It involves accelerating a rotor to high speeds and retrieving the energy by slowing it ...

[Request Quote](#)

Flywheel Energy Storage Explained: Fast, Durable And Reliable ...

At the core is the rotor - a cylindrical or disc-shaped mass that spins at high speed, often in excess of tens of thousands of revolutions per minute. When excess electricity ...

[Request Quote](#)





Contact Us

For catalog requests, pricing, or partnerships, please visit:

<https://www.energyinnovationday.pl>

Phone: +48 22 335 1273

Email: info@energyinnovationday.pl

Scan the QR code to contact us via WhatsApp.

