



How does the background of the base station communicate





Overview

Backhaul Connection: The backhaul connection links the base station to the core network in the mobile communication system. It provides for the interchange of data between the base station and other network components, hence communication with extrinsic systems.

Backhaul Connection: The backhaul connection links the base station to the core network in the mobile communication system. It provides for the interchange of data between the base station and other network components, hence communication with extrinsic systems.

Base stations are critical components in wireless communication networks, serving as the intermediary between mobile devices and the core network. They play a vital role in ensuring seamless connectivity, efficient data transmission, and reliable communication services. This blog explores the.

The idea of base stations is anchored in their function to provide coverage, capacity, and connectivity, hence allowing for extending the working capabilities of mobile phones and other radio gear. What is Base Station?

What is Base Station?

A base station represents an access point for a wireless.

They are communication hubs in a cellular network that ensure continuous service as users move throughout a geographical area. What is a Base Station?

A base station is a fixed transceiver that serves as the central communication point for mobile devices within a defined geographical area, known as.

A base station is a critical component of wireless communication networks. It serves as the central point of a network that connects various devices, such as smartphones, tablets, and computers. The base station transmits and receives signals, ensuring seamless communication over radio frequencies.

A base station is a fixed communication infrastructure that connects mobile devices (such as smartphones, tablets, or IoT devices) to a network, enabling



wireless communication. It acts as the intermediary between the mobile device and the broader telecommunications network, facilitating both data.

Often hidden in plain sight on rooftops or towers, base stations are the backbone of modern mobile networks. What Is a Base Station?

A base station is a fixed point of communication between mobile devices and the wider telecom network. It transmits and receives radio signals, enabling your phone to.



How does the background of the base station communicate



[Base Station 101: The Backbone of Mobile Communication](#)

Learn how base stations send and receive signals over the air and why they're essential for keeping us connected every day. ? Without base stations, wireless communication ...

[Request Quote](#)

Understanding Base Stations: The Backbone of Wireless Communication

In cellular networks, a base station typically consists of antennas, a transmitter/receiver system, and a base station controller (BSC). The base station is ...

[Request Quote](#)



What Is A Base Station?

Base stations play a central role in two-way radio systems, such as citizens band (CB) radio and ham radio. In these setups, the ...

[Request Quote](#)

[Understanding Base Stations: The Backbone of Wireless ...](#)

In cellular networks, a base station typically consists of antennas, a transmitter/receiver system, and a base station controller (BSC). The base station is ...



[Request Quote](#)



[Base Station's Role in Wireless Communication Networks](#)

The base station transmits and receives signals, ensuring seamless communication over radio frequencies. In essence, it acts as the intermediary between the ...

[Request Quote](#)



[Base Station's Role in Wireless Communication Networks](#)

The base station transmits and receives signals, ensuring seamless communication over radio frequencies. In essence, it acts as the intermediary between the user and the network, ...

[Request Quote](#)



[What is a Base Station? -- From Communication ...](#)

This article will guide you to a deeper understanding of a base station's composition and working principles, with a special focus on the ...

[Request Quote](#)



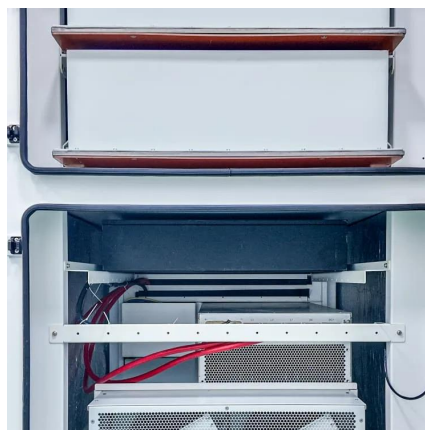
[What Is a Base Station? Definition and](#)



How It Works

Its function is to transmit and receive radio signals to and from wireless client devices. The base station acts as a converter, taking radio waves from a mobile phone and ...

[Request Quote](#)



Base Stations

Backhaul Connection: The backhaul connection links the base station to the core network in the mobile communication system. It provides for the interchange of data between ...

[Request Quote](#)

BS (Base Station)

When a wireless device, such as a mobile phone, communicates with a base station, the device sends a signal to the base station, which converts the signal into digital ...

[Request Quote](#)



BS (Base Station)

When a wireless device, such as a mobile phone, communicates with a base station, the device sends a signal to the base ...

[Request Quote](#)



What is a Base Station? -- From



Communication Core to ...

This article will guide you to a deeper understanding of a base station's composition and working principles, with a special focus on the impact of heat on base station ...

[Request Quote](#)



What Is A Base Station?

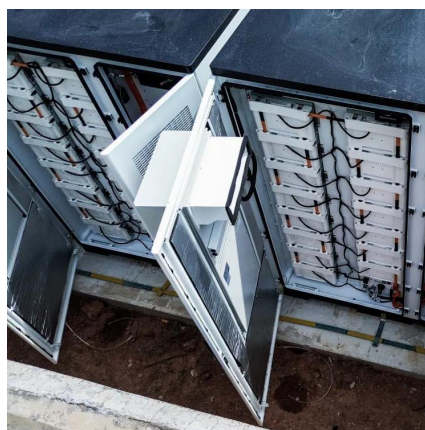
Base stations play a central role in two-way radio systems, such as citizens band (CB) radio and ham radio. In these setups, the base station serves as a fixed point of ...

[Request Quote](#)

Base Stations

Backhaul Connection: The backhaul connection links the base station to the core network in the mobile communication system. It ...

[Request Quote](#)



What Does a Base Station Do and Why Is It Essential for ...

A base station is a fixed point of communication between mobile devices and the wider telecom network. It transmits and receives radio signals, enabling your phone to access ...

[Request Quote](#)

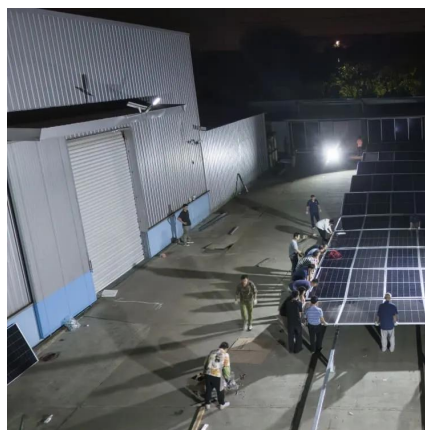
What Is the Role of a Base Station in



Wireless Communication?

Base stations are the backbone of wireless communication networks, playing a pivotal role in signal transmission, network reliability, and high-speed data connectivity.

[Request Quote](#)





Contact Us

For catalog requests, pricing, or partnerships, please visit:

<https://www.energyinnovationday.pl>

Phone: +48 22 335 1273

Email: info@energyinnovationday.pl

Scan the QR code to contact us via WhatsApp.

