



How big of an inverter do I need for 12kw





Overview

A straightforward method to calculate inverter size is: $\text{Inverter Size (VA)} = \text{Total Wattage (W)} / \text{Power Factor (0.7-0.8)}$ Once calculated, choose the next standard inverter size above your result to ensure safe and efficient operation.

A straightforward method to calculate inverter size is: $\text{Inverter Size (VA)} = \text{Total Wattage (W)} / \text{Power Factor (0.7-0.8)}$ Once calculated, choose the next standard inverter size above your result to ensure safe and efficient operation.

Your inverter needs to handle that 6kW of DC power, regardless of whether your home uses 2kW or 10kW at any given moment. The grid and your electrical panel manage the distribution to your appliances. Consider this real-world example: While this may feel counterintuitive, it's rooted in how solar.

Choosing the right solar inverter size is critical—and one of the most common questions: what solar inverter size do I need?

Whether you are installing a rooftop system in California, powering a remote cabin in Alberta, or sizing for a community center in Rajasthan, getting it right means.

Determining what size inverter do I need depends on several critical factors related to your power consumption, device requirements, and system design. The first step is calculating the total wattage of all devices you want to power simultaneously. This includes every appliance, light, and piece of.

Generally, it's recommended to size the inverter to 80-100% of the DC system's rated capacity. Before determine the inverter size, the most important thing is to calculate your average daily power consumption (kWh) and calculate your solar panel array size to match your power consumption. You could.

This guide breaks down what size solar inverter you actually need—so your setup runs smooth, efficient, and stress-free from day one. What Size Solar Inverter Do I Need?

A solar inverter should closely match your solar system's output in kW—typically within 80% to 120% of your total panel capacity.



The inverter size calculator takes the guesswork out of choosing the right inverter. Simply select your appliances below, and you'll instantly see the inverter size you need. Standard 12v models top out around 3000w (24v/48v ~ 4000w). To proceed: Upgrade to a higher-voltage system (24 V/48 V) for a.



How big of an inverter do I need for 1 2kw



[Inverter Size Calculator , Find Your Perfect Power Match](#)

The inverter size calculator takes the guesswork out of choosing the right inverter. Simply select your appliances below, and you'll instantly see the inverter size you need.

[Request Quote](#)

[How To Size A Solar Inverter in 3 Easy Steps](#)

In this guide, we share 3 easy steps on how to size a solar inverter correctly. We explain the key concepts that determine solar inverter sizing including ...

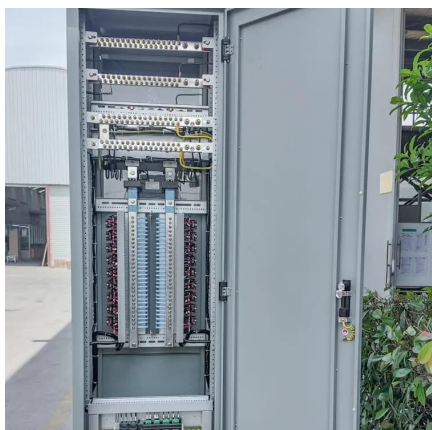
[Request Quote](#)



[The Only Inverter Size Chart You'll Ever Need](#)

We have created a comprehensive inverter size chart to help you select the correct inverter to power your ...

[Request Quote](#)



[What Size Inverter Do I Need? A Comprehensive Guide to ...](#)

Proper inverter sizing affects energy efficiency, system longevity, and whether your inverter works well with your battery setup. This inverter sizing guide will take you through the ...



[Request Quote](#)



What Size Inverter Do I Need? A Comprehensive Guide to Inverter ...

Proper inverter sizing affects energy efficiency, system longevity, and whether your inverter works well with your battery setup. This inverter sizing guide will take you through the ...

[Request Quote](#)

What Size Inverter Do I Need?

Finding the proper inverter size for your needs is as simple as adding together the necessary wattages of the items that you're looking to power.

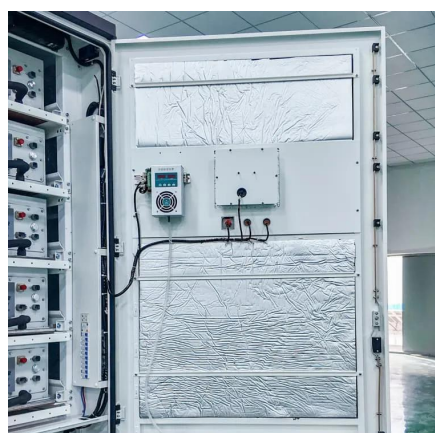
[Request Quote](#)



[Solar Inverter Sizing Guide: How to Size Your Inverter](#)

Learn how to properly size your solar inverter with our complete guide. Discover the optimal DC-to-AC ratio and avoid costly ...

[Request Quote](#)



[Solar Panel Inverter Size Calculator: What](#)



[Size Do ...](#)

Planning to install solar panels? You'll need a solar inverter. Follow this guide to calculate the best solar panel inverter size for your ...

[Request Quote](#)



[How To Size A Solar Inverter in 3 Easy Steps](#)

In this guide, we share 3 easy steps on how to size a solar inverter correctly. We explain the key concepts that determine solar inverter sizing including your power needs, the type and number ...

[Request Quote](#)

[The Only Inverter Size Chart You'll Ever Need](#)

We have created a comprehensive inverter size chart to help you select the correct inverter to power your appliances.

[Request Quote](#)



[How to Choose the Right Size Solar Inverter: Step ...](#)

This guide walks you through calculating inverter size based on panel capacity, power usage, and safety margins. We use real ...

[Request Quote](#)

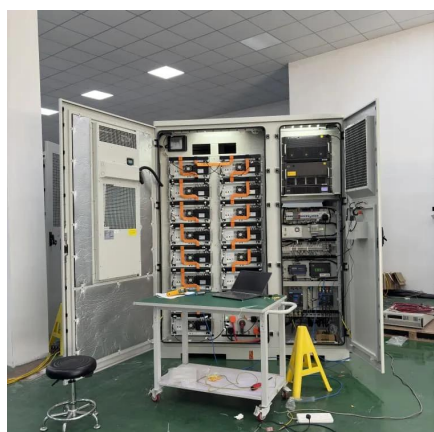
How to Choose the Right Size Solar



Inverter: Step-by-Step with ...

This guide walks you through calculating inverter size based on panel capacity, power usage, and safety margins. We use real examples from installations in Texas and ...

[Request Quote](#)



[Inverter Size Calculator - self2solar](#)

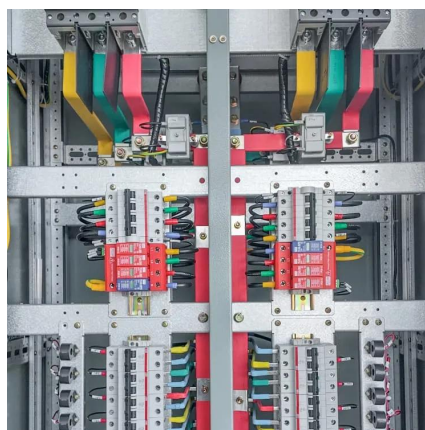
Choosing the right inverter size is essential for a reliable and efficient solar power system. Our Inverter Size Calculator simplifies this ...

[Request Quote](#)

[Solar Panel Inverter Size Calculator: What Size Do I Need?](#)

Planning to install solar panels? You'll need a solar inverter. Follow this guide to calculate the best solar panel inverter size for your system.

[Request Quote](#)



[Solar Inverter Sizing Guide: How to Size Your Inverter](#)

Learn how to properly size your solar inverter with our complete guide. Discover the optimal DC-to-AC ratio and avoid costly sizing mistakes.

[Request Quote](#)

[Inverter Size Calculator - self2solar](#)



Choosing the right inverter size is essential for a reliable and efficient solar power system. Our Inverter Size Calculator simplifies this task by accurately estimating the ...

[Request Quote](#)



[What Size Solar Inverter Do I Need? Experts ...](#)

What Size Solar Inverter Do I Need? A solar inverter should closely match your solar system's output in kW--typically within 80% to ...

[Request Quote](#)

[What Size Solar Inverter Do I Need? Experts Break It Down](#)

What Size Solar Inverter Do I Need? A solar inverter should closely match your solar system's output in kW--typically within 80% to 120% of your total panel capacity.

[Request Quote](#)





Contact Us

For catalog requests, pricing, or partnerships, please visit:

<https://www.energyinnovationday.pl>

Phone: +48 22 335 1273

Email: info@energyinnovationday.pl

Scan the QR code to contact us via WhatsApp.

