



How big of an air wind power should the battery cabinet be equipped with





Overview

Learn the main steps and factors to consider when sizing a battery bank for a wind turbine power system, such as load, battery type, voltage, capacity, and configuration.

Learn the main steps and factors to consider when sizing a battery bank for a wind turbine power system, such as load, battery type, voltage, capacity, and configuration.

The Digital display meter provides information on current (A), battery voltage (V), power (W) and wind generator energy production (W - hrs) over the recorded time-period. 2 CONTACT US Technical questions and support available: Primus Wind Power: Tech Support - 303-242-5820 ext. 3 / Email -.

The iCON 100kW 215kWh Battery Storage System is a fully integrated, on or off grid battery solution that has liquid cooled battery storage (215kWh), inverter (100kW), temperature control and fire safety system all housed within a single outdoor rated IP55 cabinet. This industrial and commercial.

Small changes in wind speed can have a dramatic effect on power produc- Safety must be the primary concern when selecting the mounting location. Install Air Breeze so there is no possibility of accidental contact with rotating blades even tion. The siting of your wind turbine should be carefully.

Wind Control Panel Instruction Manual (for use with AIR Breeze and AIR 40 12V turbines) The wind control panel is fully calibrated and ready for installation. Please follow the instructions below for proper installation. P/N 2-ARAC-103 VOLTAGE 12 VDC CURRENT 25A OVERVIEW: The POWER switch is used.

d performance of the EPIC Series Battery Cabinet. The cabinet provides a means for batteries and electrical equipment to be stored in an enclosure with the option for environmental controls and a ns o the following ind stry and agency standar truc equi equi anag 2017 Equi ment (Spe ial eque te.

wind turbine. You have purchased the most advanced battery charging wind turbin in the world! We believe you will find it easy to install your AIR and are confident you will experience years of dependable s .com/warranty. The five-year



warranty is effective only after the product has been. How do I choose a wire size for my air wind turbine?

or most sites. To determine the size wire, measure the distance from the batteries to your AIR wind turbine; including tower height. Reference the chart matching your system voltage and number of turbines and select the wire size. TIP: Smaller wires will lower the voltage at which the AIR wind turbine enters regulation and.

Can multiple air wind turbines be wired together?

URBIEN WIRING: It is possible to wire multiple AIR wind turbines together. A typical multi-turbine system is depicted in Fig. 11: Wire each turbine as a "home run" to the bus-bar. The wire size between the bus bar and battery must be sized for the full output of ALL turbines.

How do I protect my wind turbine?

mm2/35 mm2 AIR 40, AIR Breeze, AIR 30, AIR X MARINE and AIR SILENT-X are trademarks of Primus Wind Power 2013 Primus W S AND AMPMETER AIR can produce high amperages. Protect your turbine with fuses or circuit breakers. Wire with an appropriate size "slow-blow" fuse or circuit breaker between AIR and.

What is the operating temperature range of air wind turbine?

h (12.5 m/s) Operating Temperature Range: AIR Breeze and AIR 40 are certified under IEC requirements applying to the temperature range 14° F / (-10° C) to 140° F (40° C). AIR 40 is CSA, IEC & CE certified. NOTE: The AIR wind turbine is designed and has proven performance in temperature ranges of - 40° F to 140° F / month.



How big of an air wind power should the battery cabinet be equipped



AZE BESS Cabinets

Our large bess Series features an AC single bay module capable of 29.7kW with options available up to 1MW clusters. These modules are perfect for on-grid solutions, providing reliable power ...

[Request Quote](#)

[Air X Manual , PDF , Wind Power , Battery Charger](#)

1) The document is an owner's manual for the Air X wind turbine produced by Southwest Windpower. It includes instructions for assembly, installation, operation and maintenance.

[Request Quote](#)



[Air Breeze battery charging wind turbine Owner's ...](#)

Four - Air Breeze Towers 4-1 Tower Options The Air Breeze is designed to mount on tubing or pipe with a nominal 1.875 - 1.900 inch outside ...

[Request Quote](#)

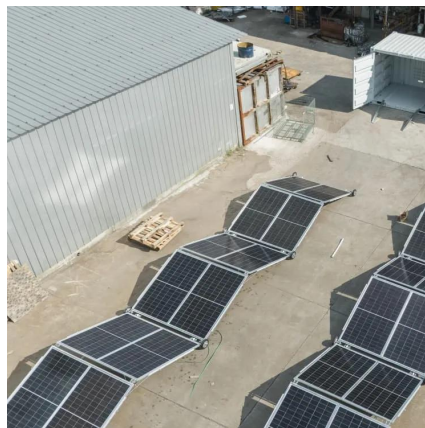


[Air Breeze battery charging wind turbine Owner's Manual](#)

Four - Air Breeze Towers 4-1 Tower Options The Air Breeze is designed to mount on tubing or pipe with a nominal 1.875 - 1.900 inch outside diameter. This dimension enables constructing ...



[Request Quote](#)



INSTRUCTION MANUAL

The wind turbine LED should blink and if there is sufficient wind it should begin spinning and current should be displayed provided the battery bank is at 85% or less.

[Request Quote](#)

[Air X Manual , PDF , Wind Power , Battery Charger](#)

1) The document is an owner's manual for the Air X wind turbine produced by Southwest Windpower. It includes instructions for assembly, installation, ...

[Request Quote](#)



INSTRUCTION MANUAL

Display/Reset" Switch the RUN-STOP switch to the "RUN" position. The wind turbine should begin turning and current should be displayed provided the battery bank is at ...

[Request Quote](#)



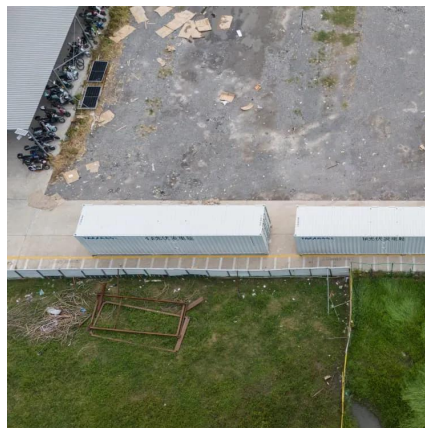
[How to Size a Battery Bank for Wind](#)



[Turbine Power Systems](#)

How can you size the battery bank for a wind turbine power system? If you want to use wind energy to power your home or business, you need a reliable and efficient battery bank to

[Request Quote](#)



[100kW 215kWh All-in-One Battery Storage Cabinet](#)

The iCON 100kW 215kWh Battery Storage System is a fully integrated, on or off grid battery solution that has liquid cooled battery storage (215kWh), inverter (100kW), ...

[Request Quote](#)



OWNER'S MANUAL

Every wind turbine and tower should be grounded at the tower base even if the turbine is grounded at the battery bank or service panel by means of the yaw ground lead.

[Request Quote](#)



[Air Breeze battery charging wind turbine Instruction manual](#)

If there is sufficient wind present, the wind turbine should begin turning and current should be displayed by the Ammeter. However, if the battery bank is fully charged, the wind turbine will ...

[Request Quote](#)



[100kW 215kWh All-in-One Battery](#)



[Storage Cabinet](#)

The iCON 100kW 215kWh Battery Storage System is a fully integrated, on or off grid battery solution that has liquid cooled battery storage (215kWh), inverter (100kW), temperature control ...

[Request Quote](#)



[Standard Specification EPIC Series Battery Cabinet](#)

3.3.4. A make up air vent will be on the far right front door of the electrical section. The battery cabinet roof will withstand loads from falling snow up to 40 psf.

[Request Quote](#)



Contact Us

For catalog requests, pricing, or partnerships, please visit:

<https://www.energyinnovationday.pl>

Phone: +48 22 335 1273

Email: info@energyinnovationday.pl

Scan the QR code to contact us via WhatsApp.

