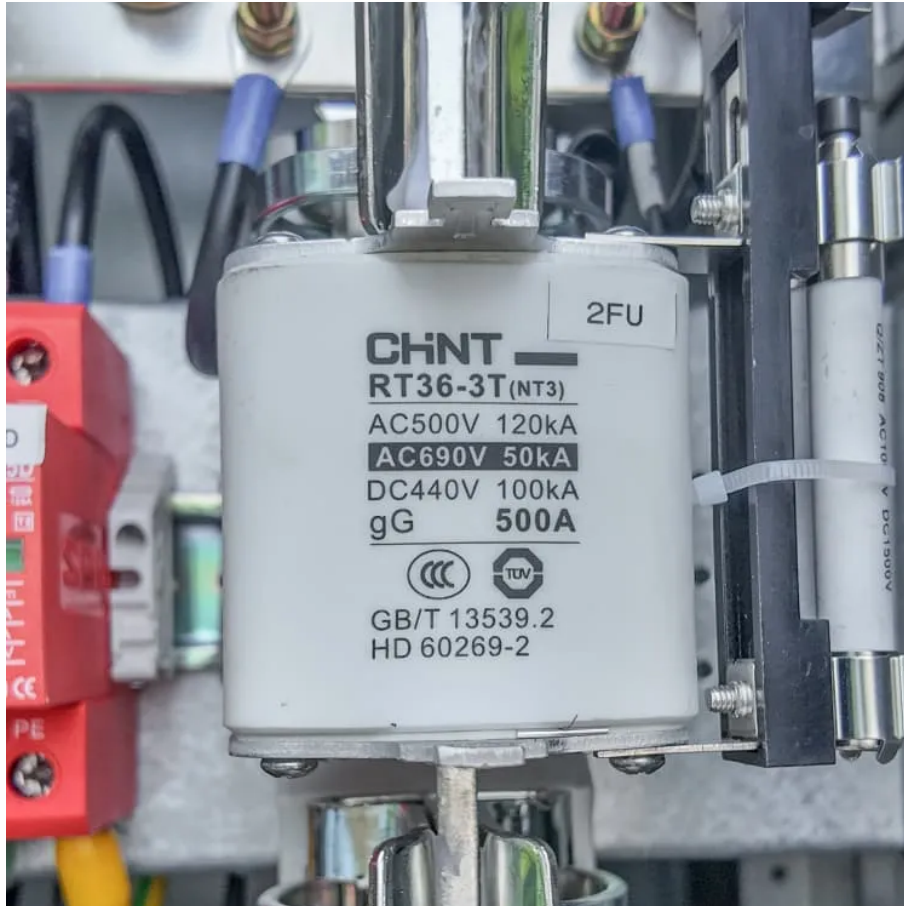




# How big is the battery of base station communication equipment





## Overview

---

Modern 5G base stations consume 2–4x more power than 4G setups, necessitating lithium racks with 150–200Ah per module. For example, a site drawing 10kW needs a 48V/400Ah system ( $\approx 19.2\text{kWh}$ ) for 8-hour backup. Pro Tip: Prioritize batteries with  $\geq 95\%$  round-trip efficiency to minimize.

Modern 5G base stations consume 2–4x more power than 4G setups, necessitating lithium racks with 150–200Ah per module. For example, a site drawing 10kW needs a 48V/400Ah system ( $\approx 19.2\text{kWh}$ ) for 8-hour backup. Pro Tip: Prioritize batteries with  $\geq 95\%$  round-trip efficiency to minimize.

Modern 5G base stations consume 2–4x more power than 4G setups, necessitating lithium racks with 150–200Ah per module. For example, a site drawing 10kW needs a 48V/400Ah system ( $\approx 19.2\text{kWh}$ ) for 8-hour backup. Pro Tip: Prioritize batteries with  $\geq 95\%$  round-trip efficiency to minimize cooling costs.

Among various battery technologies, Lithium Iron Phosphate (LiFePO<sub>4</sub>) batteries stand out as the ideal choice for telecom base station backup power due to their high safety, long lifespan, and excellent thermal stability. This guide outlines the design considerations for a 48V 100Ah LiFePO<sub>4</sub> battery.

ECE 51.2V lithium base station battery is used together with the most reliable lifepo4 battery cabinet, with long span life (4000+) and stable performance. The telecom backup batteries pack with smart battery management system can match the 19 - or 21-inch standard cabinet or rack. The ece energy.

Communication base station batteries are the backbone of modern wireless infrastructure. They ensure continuous connectivity, even during power outages or grid failures. As 5G networks expand and IoT devices proliferate, these batteries become more critical than ever. They power cell towers, small.

When natural disasters cut off power grids, when extreme weather threatens power supply safety, our communication backup power system with intelligent charge/discharge management and military-grade protection becomes the "second lifeline" for base station equipment. 45V output meets RRU equipment.

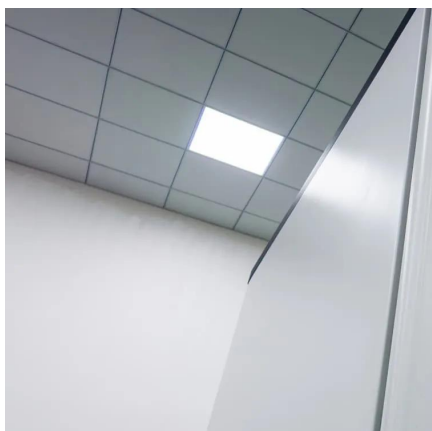
The Communication Base Station Li-ion Battery market is experiencing robust



growth, driven by the expanding global network infrastructure and the increasing demand for reliable power backup for 5G and beyond base stations. The market, estimated at \$5 billion in 2025, is projected to witness a



## How big is the battery of base station communication equipment



### Telecom Base Station Backup Power Solution: Design Guide for ...

Designing a 48V 100Ah LiFePO4 battery pack for telecom base stations requires careful consideration of electrical performance, thermal management, safety protections, and ...

[Request Quote](#)

### [Battery pack size for communication base stations](#)

Understanding Backup Battery Requirements for Telecom Base Stations Telecom base stations require reliable backup power to ensure uninterrupted communication services. Selecting the ...

[Request Quote](#)



### [Communication Base Station Backup Battery](#)

High-capacity energy storage solutions, specifically designed for communication base stations and weather stations, with strong weather resistance to ensure continuous operation of ...

[Request Quote](#)

### [How Communication Base Station Battery Works](#)

At its core, a communication base station battery comprises hardware components like lithium-ion cells, battery management systems (BMS), and power conversion units. ...



[Request Quote](#)



### [UPS Batteries in Telecom Base Stations - leagend](#)

In today's always-connected world, telecom base stations are the backbone of communication networks, ensuring seamless ...

[Request Quote](#)



### [Analyzing Communication Base Station Li-ion Battery: ...](#)

The communication base station Li-ion battery market is experiencing significant growth, driven by the expanding telecommunications infrastructure globally. This report analyzes market ...

[Request Quote](#)



### [Communication Base Station Backup Battery](#)

ECE 51.2V lithium base station battery is used together with the most reliable lifepo4 battery cabinet, with long span life (4000+) and stable ...

[Request Quote](#)



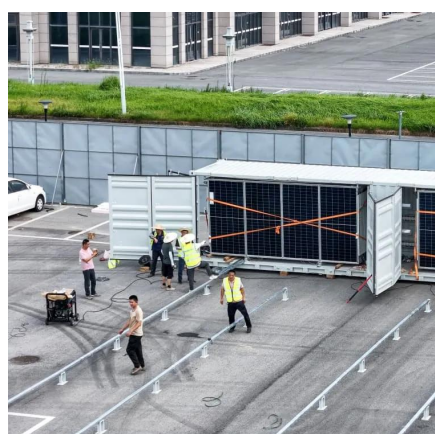
### [Communication Base Station Backup](#)



## [Battery](#)

ECE 51.2V lithium base station battery is used together with the most reliable lifepo4 battery cabinet, with long span life (4000+) and stable performance. The telecom backup batteries ...

[Request Quote](#)



## [Telecom Base Station Backup Power Solution: ...](#)

Designing a 48V 100Ah LiFePO4 battery pack for telecom base stations requires careful consideration of electrical performance, thermal ...

[Request Quote](#)

## [How much battery capacity does the base station use?](#)

The average battery capacity required by a base station ranges from 15 to 50 amp-hours (Ah), depending on the base station's operational demands and the technologies it ...

[Request Quote](#)



规格型号: DPF--4  
输入相数: -48V.24  
生产日期: 2025.04

上海汇珏

## **Telecom Base Station Battery**

Our Telecom Base Station Battery Solutions are designed to provide reliable power support for Telecommunications base stations, ensuring ...

[Request Quote](#)

## [UPS Batteries in Telecom Base Stations -](#)



## [Legend](#)

In today's always-connected world, telecom base stations are the backbone of communication networks, ensuring seamless connectivity for mobile phones, data services, ...

[Request Quote](#)



## [How much battery capacity does the base station ...](#)

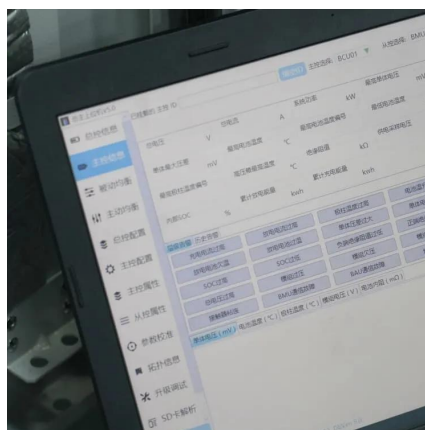
The average battery capacity required by a base station ranges from 15 to 50 amp-hours (Ah), depending on the base station's ...

[Request Quote](#)

## Telecom Base Station Battery

Our Telecom Base Station Battery Solutions are designed to provide reliable power support for Telecommunications base stations, ensuring continuous operation and optimal performance. ...

[Request Quote](#)



## [48V Communication Base Station Battery Long-Lasting ...](#)

Discover high-density 48V communication base station batteries with 10+ year lifespan, intelligent BMS, and customizable capacity. Ideal for industrial backup power.

[Request Quote](#)



## Contact Us

---

For catalog requests, pricing, or partnerships, please visit:

<https://www.energyinnovationday.pl>

Phone: +48 22 335 1273

Email: [info@energyinnovationday.pl](mailto:info@energyinnovationday.pl)

Scan the QR code to contact us via WhatsApp.

