



How big is an 8 watt solar panel





Overview

Each panel is around 400 watts, or 0.4 kW. However, besides energy consumption, other factors should be considered when estimating your solar system size. Roof size: A typical panel is 17.5 sq. ft. You'll need about 400-500 sq. ft. of roof space for 25 panels.

Each panel is around 400 watts, or 0.4 kW. However, besides energy consumption, other factors should be considered when estimating your solar system size. Roof size: A typical panel is 17.5 sq. ft. You'll need about 400-500 sq. ft. of roof space for 25 panels.

A typical 300-watt solar panel is 65.8 inches long and 36.1 inches wide. It takes up 16.5 sq ft of area. If you have a 1000 sq ft roof, and you can use 75% of that roof area for solar panels, you can theoretically put 45 300-watt solar panels on a 1000 sq ft roof. A typical 400-watt solar panel is.

Understanding solar panel dimensions is crucial for planning your solar system installation, maximizing efficiency, and ensuring compatibility with your available space. In this blog, we'll break down the standard sizes of solar panels, explain how panel dimensions impact performance, and help you.

Each panel is around 400 watts, or 0.4 kW. However, besides energy consumption, other factors should be considered when estimating your solar system size. Roof size: A typical panel is 17.5 sq. ft. You'll need about 400-500 sq. ft. of roof space for 25 panels. Panel efficiency: High-efficiency.

Solar panel size shapes everything from the watts to the ease of lifting a module onto a roof. The insights that follow weigh the gains and compromises of large versus compact panels, helping you choose a size that truly fits - Solar panel size is the key metric of every installation. A standard.



How big is an 8 watt solar panel



Understanding Solar Panel Dimensions In 2025: A Complete Size

...

Q1: What are the standard dimensions of a solar panel in 2025? A1: For homes, it's about 1.7m x 1.0m. For commercial projects, around 2.0m x 1.0m. Portable panels vary widely. ...

[Request Quote](#)

[Detailed Guide to Solar Panel Size & Dimensions](#)

Choosing the proper system is not only about the solar panel dimensions. You should also consider wattage, number of cells, layout possibilities, and energy consumption. ...

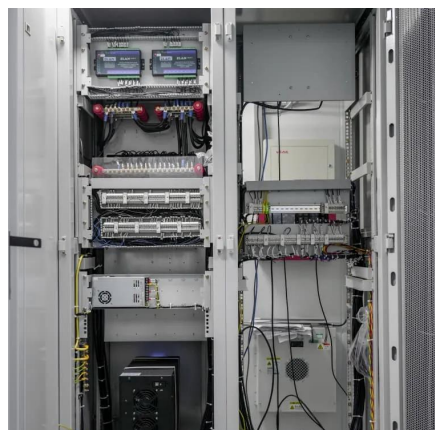
[Request Quote](#)



Solar panels size

For a very long time--basically the entire 2000s and 2010s--solar panels were built using silicon squares that were roughly 6 inches by 6 inches (156 mm).

[Request Quote](#)



[Standard Solar Panel Sizes And Wattages \(100W-500W ...](#)

To bridge that gap of very useful knowledge needed, we have compared and averaged the sizes of 100-watt to 500-watt solar panels available on the market. The goal here is to get to the ...



[Request Quote](#)



The Ultimate Guide to Solar Panel Size, Weight & Wattage (2025)

Find the exact solar panel size & weight in our 2025 guide. Our complete chart compares models by ft/cm and lbs/kg to help you plan your installation.

[Request Quote](#)



[Solar Panel Size & Dimensions Guide 2025](#) [. Complete Specs](#)

Solar panel size is measured in watts (W) and indicates how much electricity the panel can produce under standard test conditions. Here's the key distinction every homeowner ...

[Request Quote](#)



[Solar Panel And Battery Sizing Calculator](#)

Specify the solar panel wattage you plan to use. The result will estimate how many panels you need to meet your energy goals. Enter the battery storage capacity, allowing the ...

[Request Quote](#)



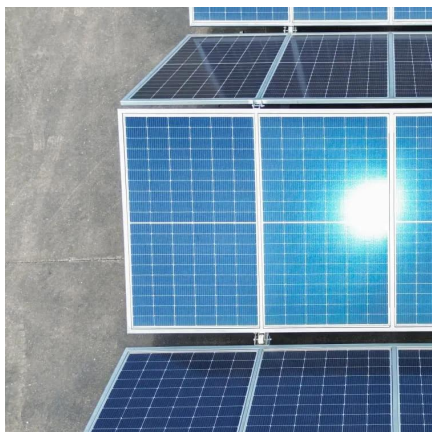
[Standard Solar Panel Sizes And Wattages](#)



[\(100W ...](#)

To bridge that gap of very useful knowledge needed, we have compared and averaged the sizes of 100-watt to 500-watt solar panels available on the ...

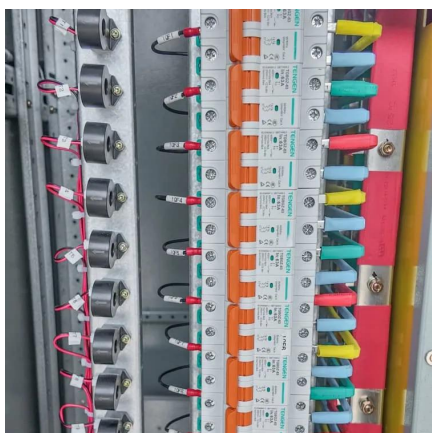
[Request Quote](#)



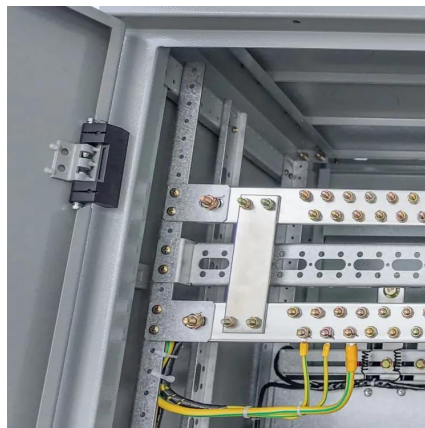
[The Ultimate Guide to Solar Panel Size, Weight](#)

Find the exact solar panel size & weight in our 2025 guide. Our complete chart compares models by ft/cm and lbs/kg to help you plan ...

[Request Quote](#)



[Solar Panel Size Guide \(with 4 Charts\)](#)



[Beginner's Guide: Sizing Your Off-Grid Solar System](#)

Required Power of Solar Panel (without considering controller and inverter loss) = $6850 \text{ Watt-Hours} / 4 \text{ Hours} = 1712.15 \text{ Watts}$. We will want to use the MPPT Controller since this is a high ...

[Request Quote](#)



[Solar Panel Size Guide , Best Panel Size for Your Roof](#)

Learn how to choose the ideal solar panel size for your home. Get expert tips, standard dimensions, and a size chart to simplify your solar decisions.

[Request Quote](#)



Many portable solar panels for RV are in the 100 to 300 watt range. The physical size of the panels often correlate to the watts, the bigger the panels the more watts it can generate. Here ...

[Request Quote](#)





Contact Us

For catalog requests, pricing, or partnerships, please visit:

<https://www.energyinnovationday.pl>

Phone: +48 22 335 1273

Email: info@energyinnovationday.pl

Scan the QR code to contact us via WhatsApp.

