



How big are the solar panels on rooftops





How big are the solar panels on rooftops



[How Big Are Solar Panels? Here's Their Typical ...](#)

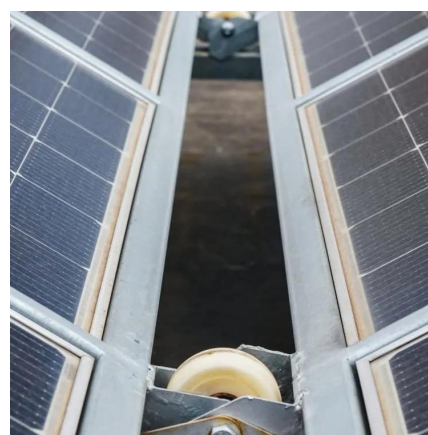
So a typical, residential rooftop solar system with 25 panels would take up about 375 square feet of roof space, but the size of your specific system ...

[Request Quote](#)

[Solar Panel Size Guide: Find the Best Fit for Your Roof](#)

Learn how solar panel size impacts roof fit, efficiency, and savings. Discover the best size for your home with our expert guide.

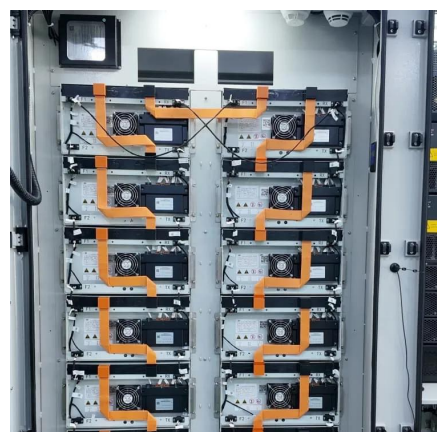
[Request Quote](#)



[Rooftop Solar Panel Size and Layout Guide](#)

The size of a solar panel is mainly determined by the number of cells, encapsulation method, and power rating. Currently, the most common monocrystalline ...

[Request Quote](#)

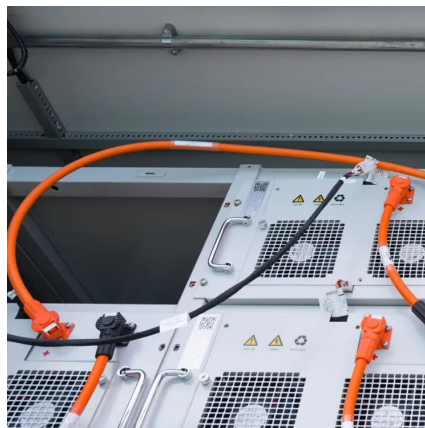


[The Ultimate Solar Panel Size Guide for Every Homeowner](#)

Solar panel size is a fundamental metric in any solar installation. The physical dimensions of a panel determine the number of solar cells it contains, which directly affects its ...



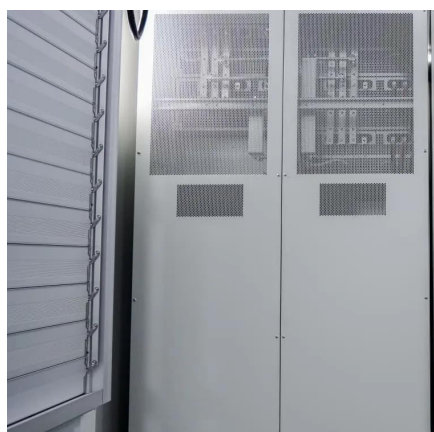
[Request Quote](#)



[Solar Panel Size & Dimensions Guide 2025 _ Complete Specs](#)

Complete guide to solar panel sizes and dimensions. Compare 60-cell vs 72-cell panels, weights, roof space requirements, and installation specs for 2025.

[Request Quote](#)



Solar Panel Size Dimensions

Most homes end up needing 15-25 panels, depending on roof size, shading, and household energy use. The smartest move is to get a custom solar quote. That way, you'll know exactly ...

[Request Quote](#)



How Big Are Solar Panels? Here's Their Typical Size and Weight

So a typical, residential rooftop solar system with 25 panels would take up about 375 square feet of roof space, but the size of your specific system will depend on your energy consumption .

[Request Quote](#)



How Big are Solar Panels?



Residential panels are the standard size for residential rooftop installations. They are around 65 inches by 39 inches, the most common type of solar panel used to power homes. Large ...

[Request Quote](#)



[Solar Panel Size Guide , Best Panel Size for Your Roof](#)

Solar cells are assembled in grids, and the most common configurations are 60-cell panels for residential use and 72-cell panels for commercial or utility use. A 60-cell panel ...

[Request Quote](#)

How big are solar panels?

Standard 60-cell solar panels are approximately 65 in x 39 in (5.4 ft x 3.25 ft, or 17.55 sq ft). Newer or higher wattage panels may have slightly different dimensions. Besides ...

[Request Quote](#)



How Big Are Solar Panels: How Panel Size Impacts Your Solar ...

So, how big are solar panels? The standard residential solar panel size is 65 inches by 39 inches, has 72 cells, and generates between 250 and 400 watts of electricity. ...

[Request Quote](#)





Contact Us

For catalog requests, pricing, or partnerships, please visit:

<https://www.energyinnovationday.pl>

Phone: +48 22 335 1273

Email: info@energyinnovationday.pl

Scan the QR code to contact us via WhatsApp.

