



How big an inverter should a solar power station be equipped with





Overview

Generally, it's recommended to size the inverter to 80-100% of the DC system's rated capacity. Before determine the inverter size, the most important thing is to calculate your average daily power consumption (kWh) and calculate your solar panel array size to match your power.

Generally, it's recommended to size the inverter to 80-100% of the DC system's rated capacity. Before determine the inverter size, the most important thing is to calculate your average daily power consumption (kWh) and calculate your solar panel array size to match your power.

A properly sized solar inverter typically lasts 10-15 years, though premium or microinverter units can reach 20-25 years with good maintenance. Think of inverter sizing like choosing the right-sized engine for your car. Too small, and you'll struggle on hills. Too large, and you're paying for power.

Solar inverters convert the direct current (DC) electricity produced by solar panels to alternating current (AC) electricity, which is used to power home appliances and electronic devices. While there are several types of inverters including hybrid, grid-tie, and off-grid inverters they all perform.

How big an inverter should a photovoltaic power station use How big an inverter should a photovoltaic power station use How do I choose a solar inverter size?

To calculate the ideal inverter size for your solar PV system, you should consider the total wattage of your solar panels and the specific.

This guide breaks down what size solar inverter you actually need—so your setup runs smooth, efficient, and stress-free from day one. What Size Solar Inverter Do I Need?

A solar inverter should closely match your solar system's output in kW—typically within 80% to 120% of your total panel capacity.

Choosing the right solar inverter size isn't just a technical detail—it's one of the most important steps in designing an efficient, cost-effective solar energy system. A perfectly sized solar inverter ensures you're maximizing the energy your panels



produce, avoiding unnecessary losses, and.

Choosing the right solar inverter size is critical—and one of the most common questions: what solar inverter size do I need?

Whether you are installing a rooftop system in California, powering a remote cabin in Alberta, or sizing for a community center in Rajasthan, getting it right means.



How big an inverter should a solar power station be equipped with



[Solar Inverter Sizing Guide for Maximum Efficiency , Mingch](#)

In most cases, the inverter size should be close to the size of your solar panel system, within a 33% ratio. For example, a 6.6kW solar array often pairs with a 5kW inverter to ...

[Request Quote](#)

[How big an inverter should a photovoltaic power station use](#)

How big an inverter should a photovoltaic power station use How do I choose a solar inverter size? To calculate the ideal inverter size for your solar PV system, you should ...

[Request Quote](#)



How to Determine the Right Solar Inverter Size for Your System

For example, a 5kW inverter is designed to handle up to 5 kilowatts of continuous power coming from your solar panels. If your solar array generates more than the inverter's ...

[Request Quote](#)



How to Choose the Right Size Solar Inverter: Step-by-Step with ...

Wondering what size solar inverter do I need for your solar system? This guide walks you through calculating inverter size based on panel capacity, power usage, and safety ...



[Request Quote](#)



[Solar Inverter Size Calculator , Inverter Sizing Tool](#)

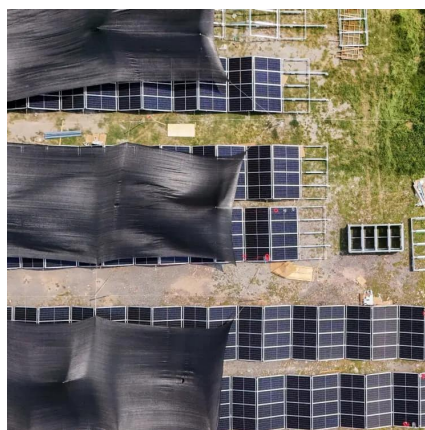
Calculate the optimal inverter size for your solar system. Determine the right inverter capacity based on panel array size, system configuration, and power requirements.

[Request Quote](#)

[Inverter Size Calculator - self2solar](#)

Choosing the right inverter size is essential for a reliable and efficient solar power system. Our Inverter Size Calculator simplifies this task by accurately estimating the ...

[Request Quote](#)



[What Size Solar Inverter Do I Need? A Quick Sizing Guide](#)

Sizing Rule: Your inverter's peak capacity must exceed the highest surge demand. Example: If your total running load is 500 W but your AC needs 2,400 W surge, choose an inverter with $>=$...

[Request Quote](#)



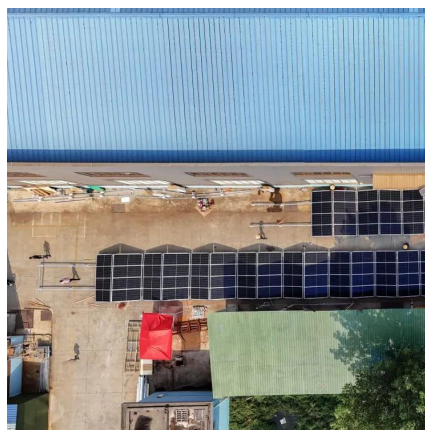
[Solar Inverter Sizing Guide: How to Size](#)



[Your Inverter](#)

Learn how to properly size your solar inverter with our complete guide. Discover the optimal DC-to-AC ratio and avoid costly ...

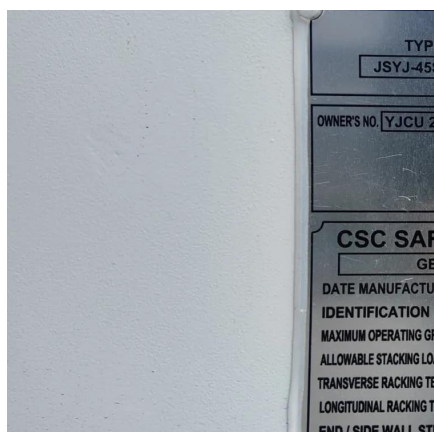
[Request Quote](#)



[Solar Inverter Sizing Guide: How to Size Your Inverter](#)

Learn how to properly size your solar inverter with our complete guide. Discover the optimal DC-to-AC ratio and avoid costly sizing mistakes.

[Request Quote](#)



[What Size Solar Inverter Do I Need? Experts Break It Down](#)

What Size Solar Inverter Do I Need? A solar inverter should closely match your solar system's output in kW--typically within 80% to 120% of your total panel capacity.

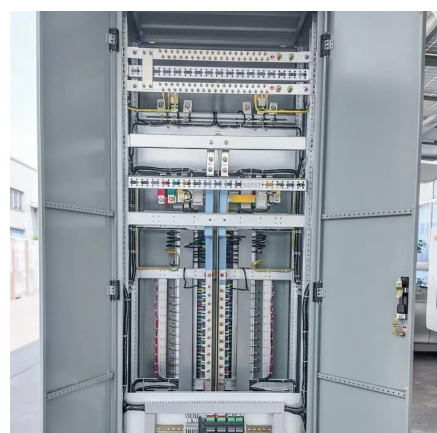
[Request Quote](#)



[How To Size A Solar Inverter in 3 Easy Steps](#)

What size solar inverter should you use for your system? In this guide we share how to correctly size a solar inverter in 3 steps.

[Request Quote](#)



[How To Size A Solar Inverter in 3 Easy](#)



[Steps](#)

How big an inverter should a photovoltaic power station use How do I choose a solar inverter size? To calculate the ideal inverter size for your solar PV system, you should ...

[Request Quote](#)





Contact Us

For catalog requests, pricing, or partnerships, please visit:

<https://www.energyinnovationday.pl>

Phone: +48 22 335 1273

Email: info@energyinnovationday.pl

Scan the QR code to contact us via WhatsApp.

