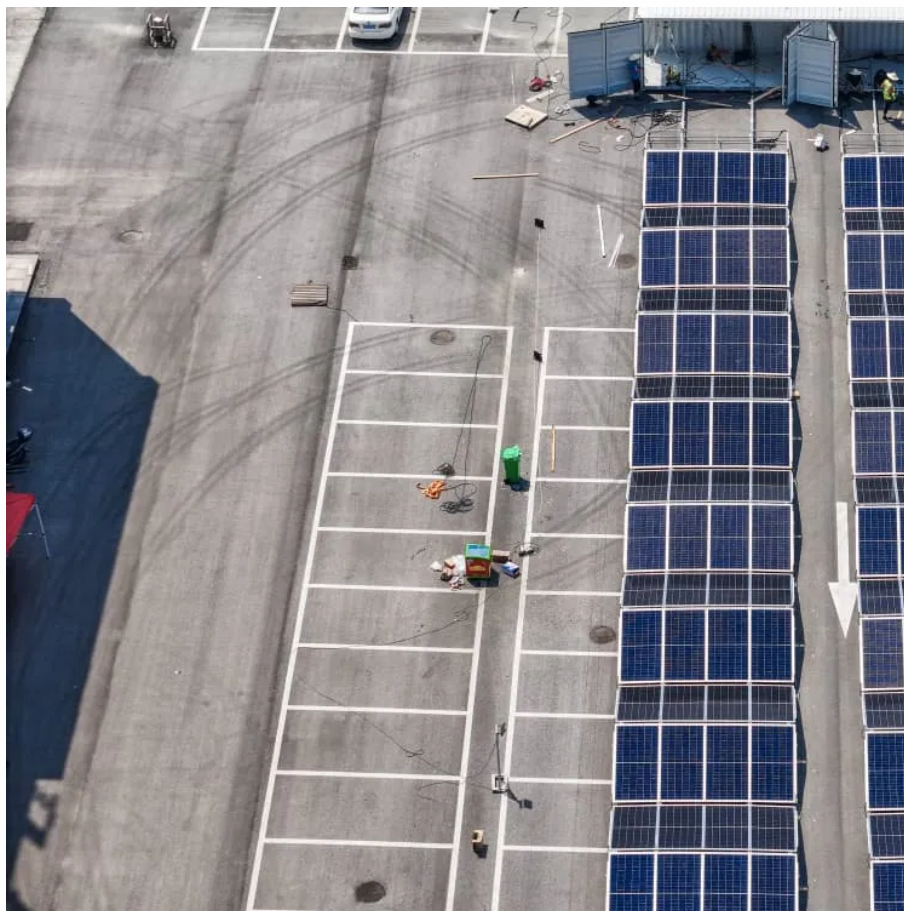




How big an inverter should I use for a 400w solar panel





Overview

Solar inverter sizing guidelines typically suggest that the inverter's rated capacity be around 80% to 100% of the total peak wattage of the solar panels. This range helps accommodate fluctuations in sunlight intensity and allows for flexibility in energy generation throughout the day.

Solar inverter sizing guidelines typically suggest that the inverter's rated capacity be around 80% to 100% of the total peak wattage of the solar panels. This range helps accommodate fluctuations in sunlight intensity and allows for flexibility in energy generation throughout the day.

Choosing the right solar inverter size is critical—and one of the most common questions: what solar inverter size do I need?

Whether you are installing a rooftop system in California, powering a remote cabin in Alberta, or sizing for a community center in Rajasthan, getting it right means.

Ready to size your inverter?

Follow this proven process: Calculate your total panel capacity Count your panels and multiply by their wattage rating. Example: 20 panels × 400 watts = 8,000 watts (8kW) Apply the DC-to-AC ratio Divide your array capacity by your target ratio. Planning to expand your.

A solar inverter should closely match your solar system's output in kW—typically within 80% to 120% of your total panel capacity. Too big = wasted money. Too small = wasted energy What Is a Solar Inverter and Why Does Size Matter?

Swap out old appliances for energy-efficient ones to cut down your.

Choosing the right solar inverter is critical to getting the most out of your photovoltaic (PV) system. Many DIY installers and homeowners ask, " what size solar inverter do I need?

" This guide will walk you through an easy, step-by-step process to accurately size your inverter, avoid common.



The size of your solar inverter should be similar to the DC rating of your system. An array-to-inverter ratio will tell you how closely you need to match the DC output. The average solar inverter has a 1.15 to 1.25 array-to-inverter ratio. Oversized inverters lose efficiency and undersized.

Generally, it's recommended to size the inverter to 80-100% of the DC system's rated capacity. Before determine the inverter size, the most important thing is to calculate your average daily power consumption (kWh) and calculate your solar panel array size to match your power consumption. You could. What size solar inverter do I Need?

Your inverter size should match your solar array's capacity, not your electricity bill. This means your inverter doesn't need to power your entire home—it just converts whatever your panels generate. Let's say you have a 6kW solar array (twenty 300-watt panels).

Do I need an inverter size chart?

The need for an inverter size chart first became apparent when researching our DIY solar generator build. Solar generators range in size from small generators for short camping trips to large off-grid power systems for a boat or house. Consequently, inverter sizes vary greatly.

How many Watts Does a solar inverter use?

Depending on where they fall in that band and the size of their solar array, they will likely use a 3, 5, or 10kW inverter. You also need to consider surge watts and voltage drop. Surge watts are the extra power required to start appliances that have motors, such as refrigerators and air conditioners.

Why should you choose a solar inverter size?

Inverters play a vital role in converting the direct current (DC) generated by your solar panels into usable alternating current (AC) for your home. Selecting the proper inverter size ensures that your solar system operates at its full potential, ultimately impacting energy savings and system longevity.



How big an inverter should I use for a 400w solar panel



[Solar Inverter Sizing Guide for Maximum Efficiency ...](#)

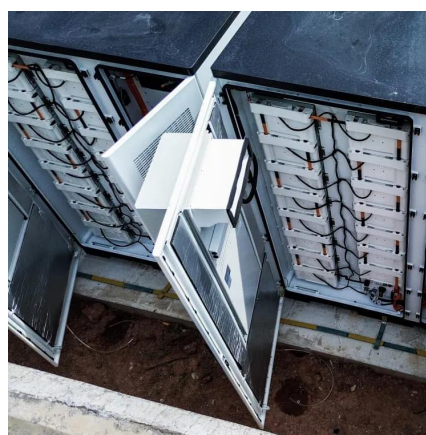
In most cases, the inverter size should be close to the size of your solar panel system, within a 33% ratio. For example, a 6.6kW solar ...

[Request Quote](#)

[Inverter Size Calculator - self2solar](#)

Determining the correct inverter size depends on your solar array's capacity and your household's power needs. Generally, the inverter should be sized to match about ...

[Request Quote](#)



[Solar Inverter Sizing Guide for Maximum Efficiency , Mingch](#)

In most cases, the inverter size should be close to the size of your solar panel system, within a 33% ratio. For example, a 6.6kW solar array often pairs with a 5kW inverter to ...

[Request Quote](#)



[How To Size A Solar Inverter in 3 Easy Steps](#)

In this guide, we share 3 easy steps on how to size a solar inverter correctly. We explain the key concepts that determine solar inverter sizing including your power needs, the type and number ...



[Request Quote](#)



[The Only Inverter Size Chart You'll Ever Need](#)

During our research, we discovered that most inverters range in size from 300 watts up to over 3000 watts. In this article, we guide you through the different inverter sizes. ...

[Request Quote](#)



[Solar Inverter Sizing Guide: How to Size Your Inverter](#)

Learn how to properly size your solar inverter with our complete guide. Discover the optimal DC-to-AC ratio and avoid costly ...

[Request Quote](#)



[What Size Solar Inverter Do I Need? A Quick Sizing Guide](#)

This guide will walk you through an easy, step-by-step process to accurately size your inverter, avoid common pitfalls, and highlight how our Lefor Solar Inverter Series can fit your specific ...

[Request Quote](#)



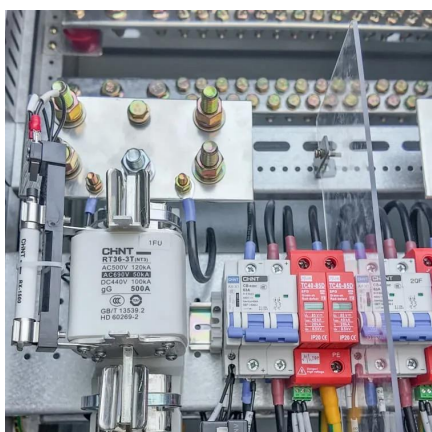
[How to Choose the Right Size Solar](#)



[Inverter: Step ...](#)

This guide walks you through calculating inverter size based on panel capacity, power usage, and safety margins. We use real ...

[Request Quote](#)



[Solar Inverter Sizing Guide: How to Size Your Inverter](#)

Learn how to properly size your solar inverter with our complete guide. Discover the optimal DC-to-AC ratio and avoid costly sizing mistakes.

[Request Quote](#)

How to Choose the Right Size Solar Inverter: Step-by-Step with ...

This guide walks you through calculating inverter size based on panel capacity, power usage, and safety margins. We use real examples from installations in Texas and ...

[Request Quote](#)



[What size inverter do I need for solar panels](#)

In this post, you will learn how to determine the right inverter size tailored for your specific solar setup. Power Requirements: Assess the total wattage of all appliances you ...

[Request Quote](#)

[What Size Solar Inverter Do I Need? A](#)



[Quick ...](#)

This guide will walk you through an easy, step-by-step process to accurately size your inverter, avoid common pitfalls, and highlight how our Lefor ...

[Request Quote](#)



[What Size Solar Inverter Do I Need? Experts ...](#)

Picking the right solar inverter isn't rocket science, but it's not a wild guess either. Match your inverter size to your solar panel output, ...

[Request Quote](#)

Solar Panel Inverter Size Calculator: Know What You Need , Angi

Planning to install solar panels? You'll need a solar inverter. Follow this guide to calculate the best solar panel inverter size for your system.

[Request Quote](#)



[Solar Panel Inverter Size Calculator: Know What ...](#)

Planning to install solar panels? You'll need a solar inverter. ...

[Request Quote](#)

[What Size Solar Inverter Do I Need?](#)



[Experts Break It Down](#)

Picking the right solar inverter isn't rocket science, but it's not a wild guess either. Match your inverter size to your solar panel output, leave a little headroom, and don't cheap ...

[Request Quote](#)





Contact Us

For catalog requests, pricing, or partnerships, please visit:

<https://www.energyinnovationday.pl>

Phone: +48 22 335 1273

Email: info@energyinnovationday.pl

Scan the QR code to contact us via WhatsApp.

