



How big an inverter should I use for 300V solar panels





Overview

Your solar inverter should have a similar or slightly higher wattage rating than the DC output of your solar panels (which in this case is 4.5 kW). You can size it between 1.15 and 1.5 times larger. The rule of thumb is to size your inverter 1.25 bigger than your solar array.

Your solar inverter should have a similar or slightly higher wattage rating than the DC output of your solar panels (which in this case is 4.5 kW). You can size it between 1.15 and 1.5 times larger. The rule of thumb is to size your inverter 1.25 bigger than your solar array.

Choosing the right solar inverter size is critical—and one of the most common questions: what solar inverter size do I need?

Whether you are installing a rooftop system in California, powering a remote cabin in Alberta, or sizing for a community center in Rajasthan, getting it right means.

Your inverter size should match your solar array's capacity, not your electricity bill. This means your inverter doesn't need to power your entire home—it just converts whatever your panels generate. Let's say you have a 6kW solar array (twenty 300-watt panels). Your inverter needs to handle that.

Choosing the right solar inverter is critical to getting the most out of your photovoltaic (PV) system. Many DIY installers and homeowners ask, “ what size solar inverter do I need?

” This guide will walk you through an easy, step-by-step process to accurately size your inverter, avoid common.

A perfectly sized solar inverter ensures you're maximizing the energy your panels produce, avoiding unnecessary losses, and setting your home up for long-term savings. Whether you're planning a new solar installation or upgrading your existing setup, understanding inverter sizing can feel.

Continuous vs. Peak Power: Understand the difference between continuous power (the wattage it can handle over time) and peak power (the maximum it can handle for short bursts) when sizing your inverter. Solar Panel Output: Factor in the output



from your solar panels, as the inverter should be.

A solar inverter should closely match your solar system's output in kW—typically within 80% to 120% of your total panel capacity. Too big = wasted money. Too small = wasted energy

What Is a Solar Inverter and Why Does Size Matter?

Swap out old appliances for energy-efficient ones to cut down your.



How big an inverter should I use for 30oV solar panels



[How To Size A Solar Inverter in 3 Easy Steps](#)

We explain the key concepts that determine solar inverter sizing including your power needs, the type and number of solar panels you need, and ...

[Request Quote](#)

How to Choose the Right Size Solar Inverter: Step-by-Step with ...

This guide walks you through calculating inverter size based on panel capacity, power usage, and safety margins. We use real examples from installations in Texas and ...

[Request Quote](#)



[What Size Solar Inverter Do I Need? A Quick ...](#)

Sizing Rule: Your inverter's peak capacity must exceed the highest surge demand. Example: If your total running load is 500 W but your AC needs ...

[Request Quote](#)

[How To Size A Solar Inverter in 3 Easy Steps](#)

We explain the key concepts that determine solar inverter sizing including your power needs, the type and number of solar panels you need, and the length of your wires.



[Request Quote](#)



[What Size Solar Inverter Do I Need? Experts Break It Down](#)

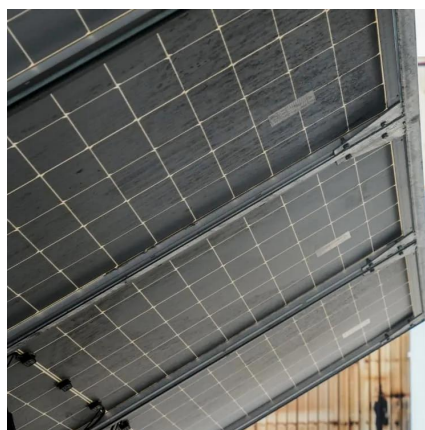
Picking the right solar inverter isn't rocket science, but it's not a wild guess either. Match your inverter size to your solar panel output, leave a little headroom, and don't cheap ...

[Request Quote](#)

Solar Panel Inverter Size Calculator: Know What You Need , Angi

For this reason, you should choose a solar inverter that's similar in size to the DC rating of your solar array, the collective number of panels feeding into the inverter. The DC ...

[Request Quote](#)



[Solar PV Inverter Sizing , Complete Guide](#)

Proper inverter sizing is vital for ensuring optimal system performance, efficiency, and longevity. An undersized inverter can lead to clipping losses, where the excess DC power ...

[Request Quote](#)

[What Size Solar Inverter Do I Need?](#)



[Experts ...](#)

Picking the right solar inverter isn't rocket science, but it's not a wild guess either. Match your inverter size to your solar panel output, ...

[Request Quote](#)



[Solar Inverter Sizing Guide: How to Size Your Inverter](#)

Learn how to properly size your solar inverter with our complete guide. Discover the optimal DC-to-AC ratio and avoid costly ...

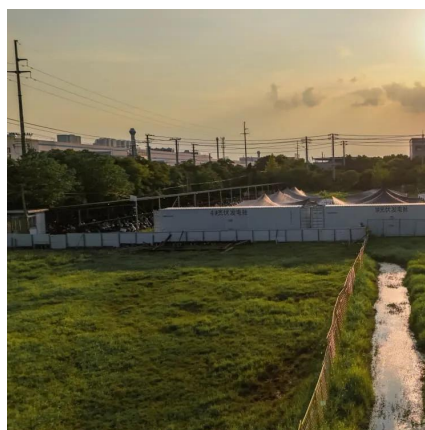
[Request Quote](#)



[How to Choose the Right Size Solar Inverter: Step ...](#)

This guide walks you through calculating inverter size based on panel capacity, power usage, and safety margins. We use real ...

[Request Quote](#)



[What size inverter do I need for solar panels](#)

Solar inverter sizing guidelines typically suggest that the inverter's rated capacity be around 80% to 100% of the total peak wattage of the solar panels. This range helps ...

[Request Quote](#)

How to Determine the Right Solar



Inverter Size for Your System

For example, a 5kW inverter is designed to handle up to 5 kilowatts of continuous power coming from your solar panels. If your solar array generates more than the inverter's ...

[Request Quote](#)



[What size inverter do I need for solar panels](#)

Solar inverter sizing guidelines typically suggest that the inverter's rated capacity be around 80% to 100% of the total peak wattage ...

[Request Quote](#)

[Solar Inverter Sizing Guide: How to Size Your Inverter](#)

Learn how to properly size your solar inverter with our complete guide. Discover the optimal DC-to-AC ratio and avoid costly sizing mistakes.

[Request Quote](#)



[What Size Solar Inverter Do I Need? A Quick Sizing Guide](#)

Sizing Rule: Your inverter's peak capacity must exceed the highest surge demand. Example: If your total running load is 500 W but your AC needs 2,400 W surge, choose an inverter with \geq ...

[Request Quote](#)

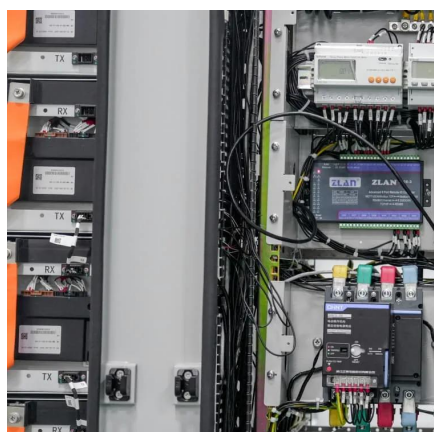
[Solar Panel Inverter Size Calculator: Know](#)



What ...

For this reason, you should choose a solar inverter that's similar in size to the DC rating of your solar array, the collective number of ...

Request Quote



Perfectly Size Your Inverter for Peak Output , EcoFlow US

Most solar professionals recommend sizing your inverter for solar panels between 75% and 115% of your total panel wattage, with the sweet spot around 1:1.15 --meaning your ...

Request Quote



Contact Us

For catalog requests, pricing, or partnerships, please visit:

<https://www.energyinnovationday.pl>

Phone: +48 22 335 1273

Email: info@energyinnovationday.pl

Scan the QR code to contact us via WhatsApp.

