



# How big an inverter should I use for 35Kw solar power generation





## Overview

---

Generally, it's recommended to size the inverter to 80-100% of the DC system's rated capacity. Before determine the inverter size, the most important thing is to calculate your average daily power consumption (kWh) and calculate your solar panel array size to match your power.

Generally, it's recommended to size the inverter to 80-100% of the DC system's rated capacity. Before determine the inverter size, the most important thing is to calculate your average daily power consumption (kWh) and calculate your solar panel array size to match your power.

Choosing the right solar inverter size is critical—and one of the most common questions: what solar inverter size do I need?

Whether you are installing a rooftop system in California, powering a remote cabin in Alberta, or sizing for a community center in Rajasthan, getting it right means.

A perfectly sized solar inverter ensures you're maximizing the energy your panels produce, avoiding unnecessary losses, and setting your home up for long-term savings. Whether you're planning a new solar installation or upgrading your existing setup, understanding inverter sizing can feel.

A solar inverter should closely match your solar system's output in kW—typically within 80% to 120% of your total panel capacity. Too big = wasted money. Too small = wasted energy

### What Is a Solar Inverter and Why Does Size Matter?

Swap out old appliances for energy-efficient ones to cut down your.

A properly sized solar inverter typically lasts 10-15 years, though premium or microinverter units can reach 20-25 years with good maintenance. Think of inverter sizing like choosing the right-sized engine for your car. Too small, and you'll struggle on hills. Too large, and you're paying for power.

Choosing the right solar inverter is critical to getting the most out of your photovoltaic (PV) system. Many DIY installers and homeowners ask, “ what size solar inverter do I need?



” This guide will walk you through an easy, step-by-step process to accurately size your inverter, avoid common.

In most cases, the inverter size should be close to the size of your solar panel system, within a 33% ratio. For example, a 6.6kW solar array often pairs with a 5kW inverter to balance efficiency, cost, and performance. This article explains how to calculate your inverter size, what affects it, and.



## How big an inverter should I use for 35Kw solar power generation



### How to Determine the Right Solar Inverter Size for Your System

For example, a 5kW inverter is designed to handle up to 5 kilowatts of continuous power coming from your solar panels. If your solar array generates more than the inverter's ...

[Request Quote](#)

### [Solar Inverter Sizing Guide for Maximum Efficiency , Mingch](#)

This article explains how to calculate your inverter size, what affects it, and how to avoid costly mistakes, especially when using high-efficiency solutions like MINGCH Electrical's ...

[Request Quote](#)



### [What Size Solar Inverter Do I Need? A Quick Sizing Guide](#)

This guide will walk you through an easy, step-by-step process to accurately size your inverter, avoid common pitfalls, and highlight how our Lefor Solar Inverter Series can fit your specific ...

[Request Quote](#)



### [How to Choose the Right Size Solar Inverter: Step ...](#)

This guide walks you through calculating inverter size based on panel capacity, power usage, and safety margins. We use real ...

[Request Quote](#)



### [Inverter Size Calculator - self2solar](#)

Determining the correct inverter size depends on your solar array's capacity and your household's power needs. Generally, the inverter should be sized to match about ...

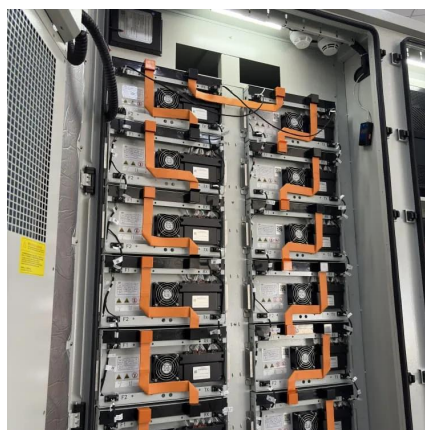
[Request Quote](#)



### [Solar Inverter Sizing Guide: How to Size Your Inverter](#)

Learn how to properly size your solar inverter with our complete guide. Discover the optimal DC-to-AC ratio and avoid costly sizing mistakes.

[Request Quote](#)



### [What Size Solar Inverter Do I Need? Experts Break It Down](#)

Picking the right solar inverter isn't rocket science, but it's not a wild guess either. Match your inverter size to your solar panel output, leave a little headroom, and don't cheap ...

[Request Quote](#)



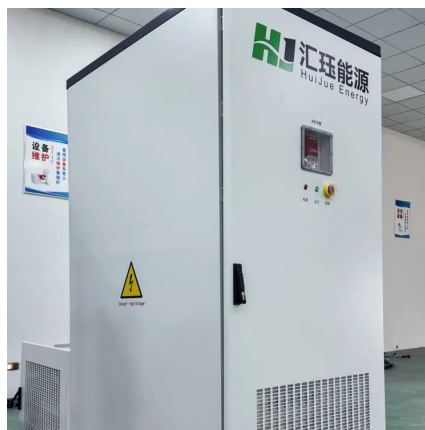
## **Solar Panel Inverter Size Calculator:**



## Know What You Need , Angi

For this reason, you should choose a solar inverter that's similar in size to the DC rating of your solar array, the collective number of panels feeding into the inverter. The DC ...

[Request Quote](#)



## How to Choose the Right Size Solar Inverter: Step-by-Step with ...

This guide walks you through calculating inverter size based on panel capacity, power usage, and safety margins. We use real examples from installations in Texas and ...

[Request Quote](#)

## Solar inverter size: Calculate the right size for your inverter

Inverters are usually sized lower than the kilowatt peak (kWp) of the solar array because solar panels rarely achieve peak power. The solar array-to-inverter ratio is calculated by dividing the ...

[Request Quote](#)



## [How To Size A Solar Inverter in 3 Easy Steps](#)

We explain the key concepts that determine solar inverter sizing including your power needs, the type and number of solar panels you need, and the length of your wires.

[Request Quote](#)



## Contact Us

---

For catalog requests, pricing, or partnerships, please visit:

<https://www.energyinnovationday.pl>

Phone: +48 22 335 1273

Email: [info@energyinnovationday.pl](mailto:info@energyinnovationday.pl)

Scan the QR code to contact us via WhatsApp.

