



How big an inverter does a household fan need





Overview

You can run most fans with a 150 watt inverter. Fans are energy efficient ways of cooling a room. Whether it's a pedestal fan, box fan, ceiling fan, or portable fan, you won't need too much power. In fact, the average domestic fan uses far less than 100 watts, sometimes as.

You can run most fans with a 150 watt inverter. Fans are energy efficient ways of cooling a room. Whether it's a pedestal fan, box fan, ceiling fan, or portable fan, you won't need too much power. In fact, the average domestic fan uses far less than 100 watts, sometimes as.

Choosing the right inverter size is crucial—too small, and your appliances won't work; too large, and you'll waste money. This guide will help you determine the ideal inverter size for your specific needs, whether for home backup, RV living, or off-grid solar power. 1. Introduction: Why Inverter.

Choosing the right size for your home power inverter is essential for ensuring that your household appliances run efficiently and that your energy system is reliable. A properly sized inverter helps prevent overloads and maximizes energy efficiency. In Srne guide, we'll walk you through how to.

Choose an inverter with at least 600W capacity (to cover the fridge's 800W starting surge). Inverters come in sizes from 500W (for small cabins) to 5000W+ (for large homes). Here's a quick guide: 500- 1000W Inerter: Best for tiny homes, RVs, or powering 2-3 small devices (lights, fan, laptop).

How to determine what size inverter I need?

Before we go any further, we highly recommend that you choose a pure sine wave inverter. This type of inverter delivers high-quality electricity, similar to your utility company. This way, none of your appliances run the risk of being damaged. Now, when.

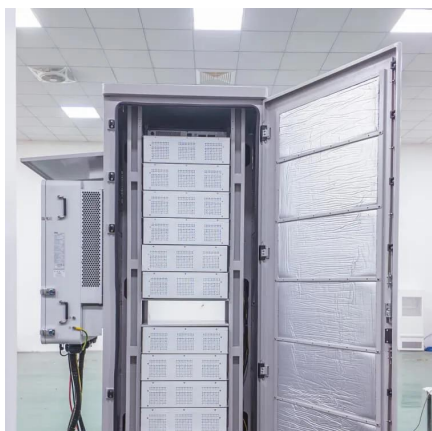
An inverter is a dedicated device designed to convert DC energy into AC power. This AC power is then supplied to run most of our home appliances. The demand for home-based backup power solutions is increasing every other day. The reason behind this fact is the rising popularity of solar energy.



In general, a 3000W to 5000W inverter works well for most homes, but the exact size depends on factors like household appliances, total power consumption, and battery setup. In this guide, we'll explain how to calculate the right inverter size for home backup power and even for solar power systems.



How big an inverter does a household fan need



Inverter Size Calculator

Knowing your AC power needs is key for selecting the right inverter. WattBuild's calculator lets you list the devices you want to power and then tells you the key stats you need to know, as ...

[Request Quote](#)

What Size Inverter for a Fan?

In fact, the average domestic fan uses far less than 100 watts, sometimes as little as 30 watts. This is great as it means you don't need a big inverter to get up and running. In my ...

[Request Quote](#)



[What Size Inverter Do You Need for Your Home? , Renogy US](#)

If you live in a small apartment, a 250 VA inverter coupled with a 100 Ah battery will be a perfect choice to power all basic appliances, including television, lights, and fans.

[Request Quote](#)

What Size Inverter Do I Need?

Finding the proper inverter size for your needs is as simple as adding together the necessary wattages of the items that you're looking to power.

[Request Quote](#)



[How to Size a Home Power Inverter for Your ...](#)

Provide detailed instructions on how to calculate the appropriate size of a power inverter based on household power ...

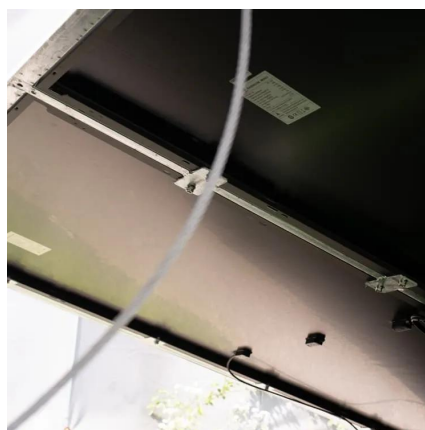
[Request Quote](#)



[What Size Power Inverter Is Needed for a House ...](#)

In general, a 3000W to 5000W inverter works well for most homes, but the exact size depends on factors like household appliances, ...

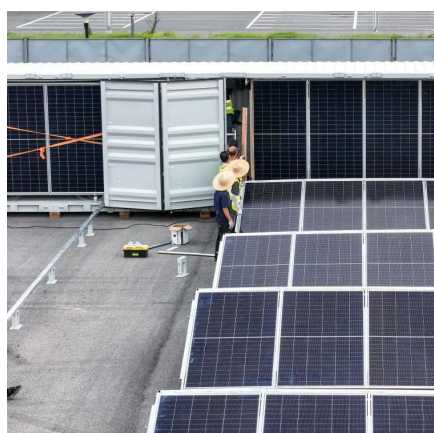
[Request Quote](#)



[How to Choose the Right Inverter Size for Your Home](#)

Choosing the right inverter size comes down to knowing your power needs, matching battery capacity, and prioritizing safety features.

[Request Quote](#)



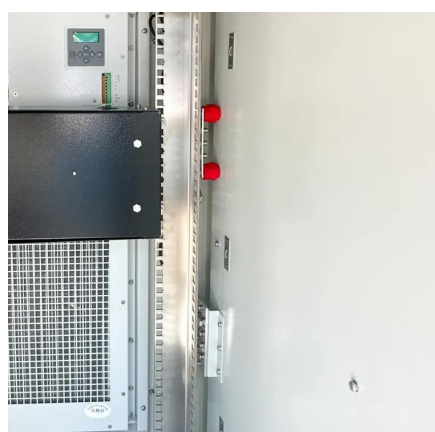
What Size Inverter Do You Need? A



Complete Guide for Home, ...

Choosing the right inverter size is crucial--too small, and your appliances won't work; too large, and you'll waste money. This guide will help you determine the ideal inverter ...

[Request Quote](#)



[What Size Power Inverter Is Needed for a House \[Full Guide\]](#)

In general, a 3000W to 5000W inverter works well for most homes, but the exact size depends on factors like household appliances, total power consumption, and battery ...

[Request Quote](#)

[The Only Inverter Size Chart You'll Ever Need](#)

We have created a comprehensive inverter size chart to help you select the correct inverter to power your appliances.

[Request Quote](#)



What Size Inverter Do I Need

To properly size an inverter, simply add up the running power of your devices and factor in a safety margin based on their surge consumption. In other words, the two key ...

[Request Quote](#)

[The Only Inverter Size Chart You'll Ever](#)



[Need](#)

How to Determine What Size Inverter I Need? What Are The Two Types of Power loads? Inverter Size Chart What Will A 300W Inverter Run? What Will A 500W Inverter Run? What Will A 700W Inverter Run? What Will A 1000W Inverter Run? What Will A 1500W Inverter Run? What Will A 2000W Inverter Run? What Will A 3000W Inverter Run? Before we go any further, we highly recommend that you choose a pure sine wave inverter. This type of inverter delivers high-quality electricity, similar to your utility company. This way, none of your appliances run the risk of being damaged. Now, when it comes to sizing your inverter, you always need to check your appliances' wattage and ensure t See more on climatebiz Renogy



What Size Inverter Do You Need for Your Home?

If you live in a small apartment, a 250 VA inverter coupled with a 100 Ah battery will be a perfect choice to power all basic appliances, including ...

[Request Quote](#)



How to Size a Home Power Inverter for Your Needs: A Step-by ...

Provide detailed instructions on how to calculate the appropriate size of a power inverter based on household power requirements. Include formulas, examples, and ...

[Request Quote](#)

What Size Inverter for a Fan?

In fact, the average domestic fan uses far less than 100 watts, sometimes as little as 30 watts. This is great as it means you don't need a big inverter to ...

[Request Quote](#)





Contact Us

For catalog requests, pricing, or partnerships, please visit:

<https://www.energyinnovationday.pl>

Phone: +48 22 335 1273

Email: info@energyinnovationday.pl

Scan the QR code to contact us via WhatsApp.

