



# How big an inverter can I use for 48v24a





## Overview

---

Similarly, 24v and 48v systems generally support inverter sizes up to about 4000w. If your inverter size exceeds these practical limits: Reduce how many appliances uses at the same time. Consider lower-wattage appliances or DC alternatives.

Similarly, 24v and 48v systems generally support inverter sizes up to about 4000w. If your inverter size exceeds these practical limits: Reduce how many appliances uses at the same time. Consider lower-wattage appliances or DC alternatives.

A 24V inverter is designed for 24 volts. Connecting it to a 48V battery can lead to overvoltage. This can damage the inverter and any devices plugged into it. Always ensure the inverter specifications match the battery voltage for safe use. If you desire to use a 24V inverter with a 48V battery.

When using a 48V inverter, it's essential to pair it with a battery system that delivers consistent 48V output. Below are three top battery options that are ideal for powering 48V inverters. These are selected based on reliability, performance, and value for money. Lightweight yet powerful, this.

Simply select your appliances below, and you'll instantly see the inverter size you need. Standard 12v models top out around 3000w (24v/48v ~ 4000w). To proceed: Upgrade to a higher-voltage system (24 V/48 V) for a larger inverter. Consider a higher-voltage system for a bigger inverter. Pick your.

To calculate the appropriate inverter size for a 48V battery system, you need to determine the total wattage of the devices you plan to power. The formula is:  $\text{Inverter Size (Watts)} = \text{Total Load (Watts)} / \text{System Voltage (48V)}$ . This calculation ensures that the inverter can handle the required load.

A 48V inverter is a device that converts 48 volts of direct current (DC), which is normally stored in a battery, to alternating current (AC), which is used to power common household appliances. This is critical in solar power systems because solar panels and batteries use DC power, while most.

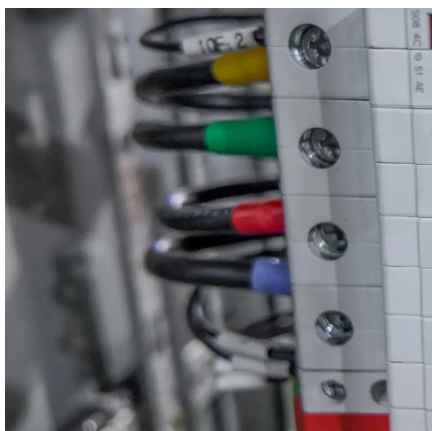
Knowing your AC power needs is key for selecting the right inverter. WattBuild's calculator lets you list the devices you want to power and then tells you the key stats you need to know, as well as showing which products on the market are



compatible. Use the Add Device section to begin adding your.



## How big an inverter can I use for 48v24a



### 12V vs 24V vs 48V Inverter: How to Choose the Right System for ...

Confused about choosing between 12V, 24V, or 48V inverter systems? Discover which voltage is best for RV, solar, and off-grid setups. Learn the pros, cons, efficiency, cable ...

[Request Quote](#)



### [What Size Inverter Do You Need? A Complete ...](#)

Choosing the right inverter size is crucial--too small, and your appliances won't work; too large, and you'll waste money. This guide will ...

[Request Quote](#)

### How Do You Calculate the Appropriate Inverter Size for a 48V ...

To calculate the appropriate inverter size for a 48V battery system, you need to determine the total wattage of the devices you plan to power. The formula is: Inverter Size ...

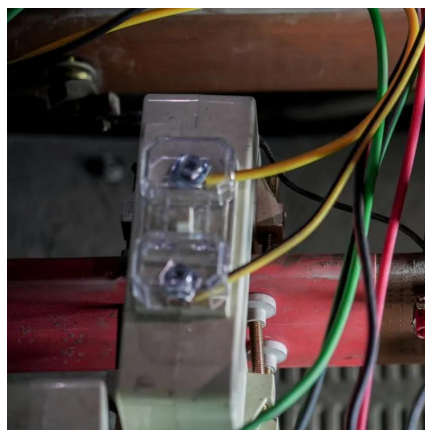
[Request Quote](#)



### Inverter Size Calculator

WattBuild's calculator lets you list the devices you want to power and then tells you the key stats you need to know, as well as showing which ...

[Request Quote](#)



### [Can an Inverter Be Too Big for Your Battery System?](#)

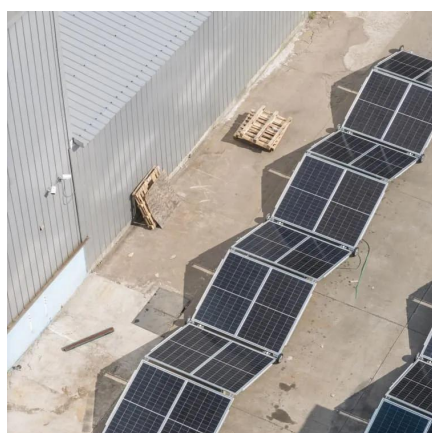
When sizing for 24V or 48V systems, recalculate using the higher voltage. A 48V 100Ah lithium battery (4.8kWh) paired with a 5000W inverter works because  $48V \times 100Ah \times 1C = 4800W$ . ...

[Request Quote](#)

### **The Differences Between 24v and 48v Inverter: Which is Better?**

For the same amount of power, a 48V inverter outputs half the current of a 24V inverter. Lower current means less energy lost. Especially over long distances, 48V inverters ...

[Request Quote](#)



### **What Size Inverter Do You Need? A Complete Guide for Home, ...**

Choosing the right inverter size is crucial--too small, and your appliances won't work; too large, and you'll waste money. This guide will help you determine the ideal inverter ...

[Request Quote](#)

### [The Differences Between 24v and 48v](#)



## [Inverter: ...](#)

For the same amount of power, a 48V inverter outputs half the current of a 24V inverter. Lower current means less energy lost. ...

[Request Quote](#)



## **Can a 48V Inverter Work with a 24V Battery? - A Comprehensive ...**

Connecting a 48V inverter directly to a 24V battery is not recommended and can lead to serious technical issues or equipment failure. Here's a detailed look into why this setup ...

[Request Quote](#)

## [Inverter Size Calculator , Find Your Perfect Power Match](#)

**Minimum Inverter Size:** The smallest inverter that can handle your highest-wattage appliance. Ideal if you run one device at a time - or several devices whose combined draw ...

[Request Quote](#)



## **Can I Use A 24V Inverter On A 48V Battery? Compatibility And ...**

No, you should not use a 24V inverter with a 48V battery. A 24V inverter is designed for 24 volts. Connecting it to a 48V battery can lead to overvoltage. This can damage ...

[Request Quote](#)

## **48V Inverter: The Ultimate Guide to**



## Efficient and Scalable Power

As solar power systems grow in size and capability, the demand for stable and scalable inverter solutions has increased. A 48V inverter is ideal for solar arrays above 3kW ...

[Request Quote](#)



## Inverter Size Calculator

WattBuild's calculator lets you list the devices you want to power and then tells you the key stats you need to know, as well as showing which products on the market are compatible. Use the ...

[Request Quote](#)



## Contact Us

---

For catalog requests, pricing, or partnerships, please visit:

<https://www.energyinnovationday.pl>

Phone: +48 22 335 1273

Email: [info@energyinnovationday.pl](mailto:info@energyinnovationday.pl)

Scan the QR code to contact us via WhatsApp.

