



How big a watt inverter is suitable for solar





Overview

Determining the correct inverter size depends on your solar array's capacity and your household's power needs. Generally, the inverter should be sized to match about 80–100% of your system's DC rating. For example, if you have a 5 kW solar array, you might choose a 5.

Determining the correct inverter size depends on your solar array's capacity and your household's power needs. Generally, the inverter should be sized to match about 80–100% of your system's DC rating. For example, if you have a 5 kW solar array, you might choose a 5.

Choosing the right solar inverter size can make or break your solar investment. Get it wrong, and you'll either waste money on oversized equipment or lose precious energy production. Here's everything you need to know to nail your inverter sizing the first time. Your solar inverter serves as the.

Choosing the right solar inverter is critical to getting the most out of your photovoltaic (PV) system. Many DIY installers and homeowners ask, “ what size solar inverter do I need?

” This guide will walk you through an easy, step-by-step process to accurately size your inverter, avoid common.

Choosing the right solar inverter size is critical—and one of the most common questions: what solar inverter size do I need?

Whether you are installing a rooftop system in California, powering a remote cabin in Alberta, or sizing for a community center in Rajasthan, getting it right means.

This guide breaks down what size solar inverter you actually need—so your setup runs smooth, efficient, and stress-free from day one. What Size Solar Inverter Do I Need?

A solar inverter should closely match your solar system's output in kW—typically within 80% to 120% of your total panel capacity.

Choosing the right solar inverter size isn't just a technical detail—it's one of the



most important steps in designing an efficient, cost-effective solar energy system. A perfectly sized solar inverter ensures you're maximizing the energy your panels produce, avoiding unnecessary losses, and.

When choosing a solar inverter, size matters more than you might think. The right solar inverter sizing helps ensure your system performs efficiently, qualifies for incentives, and doesn't cost you more than necessary. So, what size solar inverter do you need?

In most cases, the inverter size. What size solar inverter do I Need?

Your inverter size should match your solar array's capacity, not your electricity bill. This means your inverter doesn't need to power your entire home—it just converts whatever your panels generate. Let's say you have a 6kW solar array (twenty 300-watt panels).

How many Watts Does a solar inverter use?

Depending on where they fall in that band and the size of their solar array, they will likely use a 3, 5, or 10kW inverter. You also need to consider surge watts and voltage drop. Surge watts are the extra power required to start appliances that have motors, such as refrigerators and air conditioners.

How do I choose a solar inverter?

Knowing your array size allows you to choose an inverter that can handle that production efficiently—without over- or under-investing in capacity. The second step is understanding your system's DC-to-AC ratio, one of the most important metrics when sizing a solar inverter.

How many kilowatts can a solar inverter handle?

For example, a 5kW inverter is designed to handle up to 5 kilowatts of continuous power coming from your solar panels. If your solar array generates more than the inverter's rated capacity during peak sunlight hours, the inverter won't be able to process all of it—some energy will be clipped or lost.



How big a watt inverter is suitable for solar



[What Size Solar Inverter Do I Need? Experts Break It Down](#)

What Size Solar Inverter Do I Need? A solar inverter should closely match your solar system's output in kW--typically within 80% to 120% of your total panel capacity.

[Request Quote](#)

[Solar Inverter Size Calculator , Inverter Sizing Tool](#)

Calculate the optimal inverter size for your solar system. Determine the right inverter capacity based on panel array size, system configuration, and power requirements.

[Request Quote](#)



[What Size Solar Inverter Do I Need? A Quick ...](#)

This guide will walk you through an easy, step-by-step process to accurately size your inverter, avoid common pitfalls, and highlight how our Lefor ...

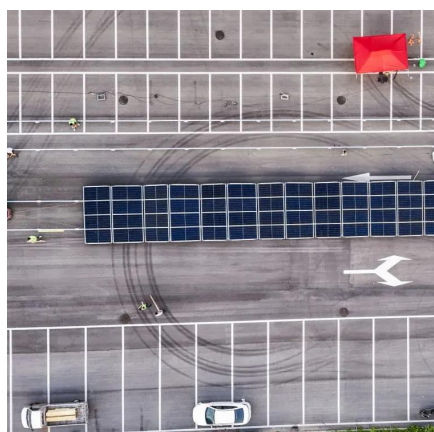
[Request Quote](#)

How to Choose the Right Size Solar Inverter: Step-by-Step with ...

Wondering what size solar inverter do I need for your solar system? This guide walks you through calculating inverter size based on panel capacity, power usage, and safety ...



[Request Quote](#)



[What Size Solar Inverter Do I Need? Experts ...](#)

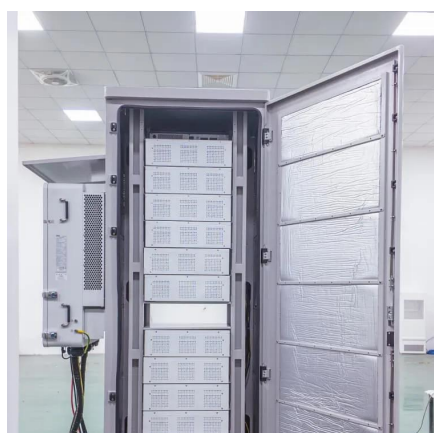
What Size Solar Inverter Do I Need? A solar inverter should closely match your solar system's output in kW--typically within 80% to ...

[Request Quote](#)

[Solar Inverter Sizing Guide for Maximum Efficiency ...](#)

In most cases, the inverter size should be close to the size of your solar panel system, within a 33% ratio. For example, a 6.6kW solar ...

[Request Quote](#)



[Inverter Size Calculator - self2solar](#)

Choosing the right inverter size is essential for a reliable and efficient solar power system. Our Inverter Size Calculator simplifies this ...

[Request Quote](#)

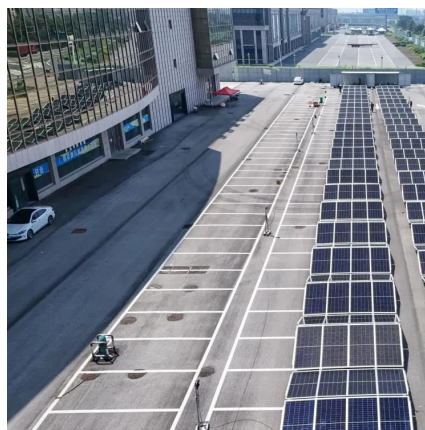
How to Determine the Right Solar



Inverter Size for Your System

For example, a 5kW inverter is designed to handle up to 5 kilowatts of continuous power coming from your solar panels. If your solar array generates more than the inverter's ...

[Request Quote](#)



Solar Panel Inverter Size Calculator: Know What You Need , Angi

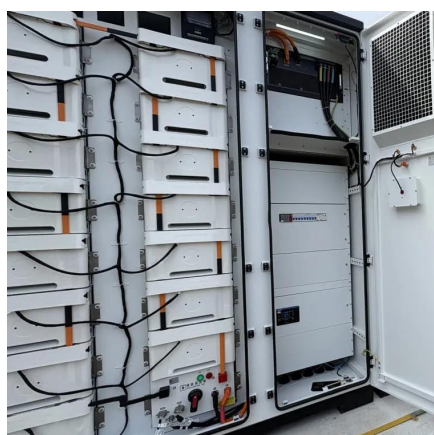
For example, if you have a 6-kilowatt (kW) solar energy system, use an inverter that has a maximum AC output of around 6,000 watts. Keep in mind, this is just a rule of thumb. ...

[Request Quote](#)

[Solar Inverter Sizing Guide: How to Size Your Inverter](#)

Learn how to properly size your solar inverter with our complete guide. Discover the optimal DC-to-AC ratio and avoid costly sizing mistakes.

[Request Quote](#)



[Inverter Size Calculator - self2solar](#)

Choosing the right inverter size is essential for a reliable and efficient solar power system. Our Inverter Size Calculator simplifies this task by accurately estimating the ...

[Request Quote](#)

[How to Choose the Right Size Solar](#)



[Inverter: Step ...](#)

Wondering what size solar inverter do I need for your solar system? This guide walks you through calculating inverter size based on ...

[Request Quote](#)



[How To Size A Solar Inverter in 3 Easy Steps](#)

What size solar inverter should you use for your system? In this guide we share how to correctly size a solar inverter in 3 steps.

[Request Quote](#)



[What Size Solar Inverter Do I Need? A Quick Sizing Guide](#)

This guide will walk you through an easy, step-by-step process to accurately size your inverter, avoid common pitfalls, and highlight how our Lefor Solar Inverter Series can fit your specific ...

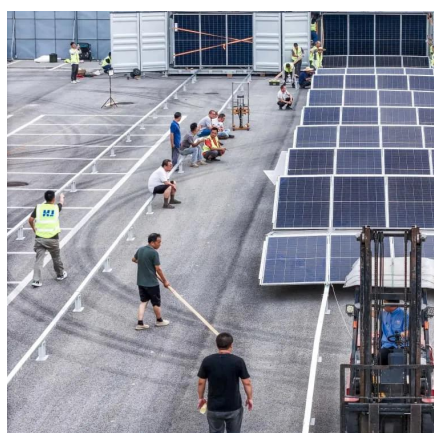
[Request Quote](#)



[Solar Inverter Sizing Guide: How to Size Your Inverter](#)

Learn how to properly size your solar inverter with our complete guide. Discover the optimal DC-to-AC ratio and avoid costly ...

[Request Quote](#)



[Solar Inverter Sizing Guide for Maximum](#)



[Efficiency , Mingch](#)

In most cases, the inverter size should be close to the size of your solar panel system, within a 33% ratio. For example, a 6.6kW solar array often pairs with a 5kW inverter to ...

[Request Quote](#)





Contact Us

For catalog requests, pricing, or partnerships, please visit:

<https://www.energyinnovationday.pl>

Phone: +48 22 335 1273

Email: info@energyinnovationday.pl

Scan the QR code to contact us via WhatsApp.

