



How big a solar panel should a 200ah battery be matched with





Overview

For a 200Ah lithium battery, we recommend a solar panel size ranging between 480W and 550W. This range effectively balances the need to meet the battery's charging requirements while accounting for variations in energy consumption and sunlight availability.

For a 200Ah lithium battery, we recommend a solar panel size ranging between 480W and 550W. This range effectively balances the need to meet the battery's charging requirements while accounting for variations in energy consumption and sunlight availability.

Determining the right size of a solar panel to charge a 200Ah battery can feel overwhelming, especially if you're navigating the world of solar power for the first time. What Size Solar Panel to Charge a 200Ah Battery Calculator exists to simplify the process, enabling you to match your energy.

Understanding the right solar panel size ensures that you can efficiently charge your battery, maximizing performance and longevity. The primary search intent behind this query revolves around finding the appropriate solar panel specifications to effectively charge a 200Ah lithium battery. This.

Battery Capacity Understanding: A 200Ah battery can supply significant power; knowing its capacity is crucial for determining the appropriate solar panel size for efficient charging. **Solar Panel Types:** Consider the differences between monocrystalline, polycrystalline, and thin-film panels, each.

When choosing the right solar panel for a 200Ah battery, the recommended range of panel size is typically 400W to 500W. This range offers a good balance between effective charging times and cost-effectiveness. Whether you have a lithium or lead-acid battery, this wattage range ensures that your.

Short Answer: The best solar panel for a 200Ah battery depends on energy requirements, sunlight availability, and system voltage. For a 12V 200Ah battery requiring 1,200Wh daily, a 300W-400W panel is ideal. Monocrystalline panels are preferred for efficiency, while polycrystalline suits budget.

When optimizing energy systems, one critical factor that often arises is the



appropriate solar panel size required to efficiently charge a 200Ah lithium battery. Selecting the right solar panel size is pivotal to ensuring effective and consistent energy storage, especially if you aim to maintain a.



How big a solar panel should a 200ah battery be matched with



What Size Solar Panel to Charge 200Ah Battery for Efficient and

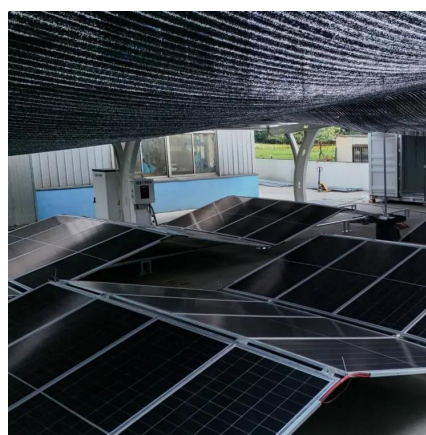
To charge a 200Ah battery efficiently, you typically need a solar panel size between 400 to 800 watts for off-grid use, depending on your daily energy needs. For home backup ...

[Request Quote](#)

How Many Solar Panels for a 200Ah Battery: Efficient Charging ...

In summary, charging a 200Ah battery typically requires 2 to 6 solar panels, influenced by variables such as sunlight, geographical location, and system inefficiencies.

[Request Quote](#)



What Size Solar Panel to Charge a 200Ah Lithium ...

Cut to the chase, to charge a 200Ah lithium battery effectively, you'll need approximately 610 watts of solar panels if you're using an ...

[Request Quote](#)

What Size Solar Panel Is Needed To Charge 200Ah Battery?

Accurately matching the solar panel size with the battery's capacity optimises energy use and extends the battery's lifespan. For example, a 200Ah battery will require more ...



[Request Quote](#)



[What Size Solar Panel Is Needed To Charge ...](#)

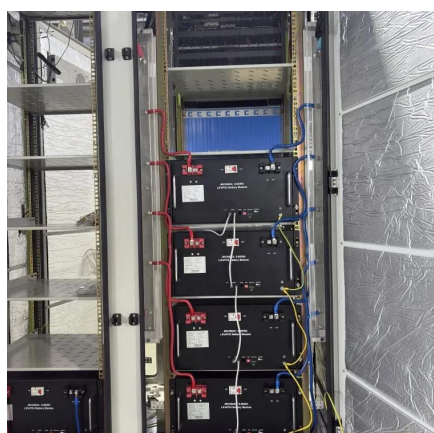
Accurately matching the solar panel size with the battery's capacity optimises energy use and extends the battery's lifespan. For ...

[Request Quote](#)

Choosing the Right Size Solar Panel for 200Ah Lithium Battery

Learn how to choose the right size solar panel to effectively charge a 200Ah lithium battery, including common myths and FAQs.

[Request Quote](#)



[Which Solar Panel is Best for a 200Ah Battery? A ...](#)

Short Answer: The best solar panel for a 200Ah battery depends on energy requirements, sunlight availability, and system voltage. For a 12V 200Ah battery requiring ...

[Request Quote](#)

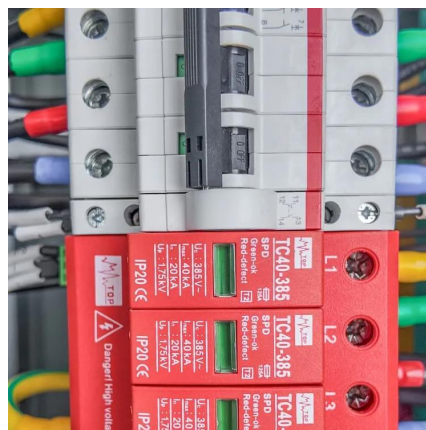
[Which Solar Panel is Best for a 200Ah](#)



[Battery?](#)

When choosing the best solar panel for a 200Ah battery, a 400W to 500W panel is typically the optimal choice for most users. This ...

[Request Quote](#)



[What Size Solar Panel To Charge 200Ah Battery?](#)

Use our solar panel size calculator to find out what size solar panel you need to charge 200ah lead acid or lithium battery. Note: Click ...

[Request Quote](#)

[Which Solar Panel is Best for a 200Ah Battery?](#)

When choosing the best solar panel for a 200Ah battery, a 400W to 500W panel is typically the optimal choice for most users. This size offers a good balance between fast ...

[Request Quote](#)



[What Size Solar Panel to Charge a 200Ah Battery Calculator](#)

What Size Solar Panel to Charge a 200Ah Battery Calculator exists to simplify the process, enabling you to match your energy needs with the appropriate solar panel size.

[Request Quote](#)



[Essential Solar Panel Size for a 200Ah](#)



[Lithium Battery](#)

For a 200Ah lithium battery, we recommend a solar panel size ranging between 480W and 550W. This range effectively balances the need to meet the battery's charging ...

[Request Quote](#)



What Size Solar Panel to Charge a 200Ah Lithium Battery? What ...

Cut to the chase, to charge a 200Ah lithium battery effectively, you'll need approximately 610 watts of solar panels if you're using an MPPT charge controller. That's the ...

[Request Quote](#)

What Size Solar Panel To Charge 200Ah Battery? (Incl. Calculator)

Use our solar panel size calculator to find out what size solar panel you need to charge 200ah lead acid or lithium battery. Note: Click here to read our in-depth guide on how ...

[Request Quote](#)





Contact Us

For catalog requests, pricing, or partnerships, please visit:

<https://www.energyinnovationday.pl>

Phone: +48 22 335 1273

Email: info@energyinnovationday.pl

Scan the QR code to contact us via WhatsApp.

