



How big a solar panel should I use for a 20A lead-acid battery





Overview

To charge a 12V 20Ah battery, you need a solar panel of at least 100W. This panel produces about 5A. If you get 6 hours of sunlight daily, a 100W panel provides enough energy. Consider adjusting the panel size based on charging time, sunlight hours, and your energy usage for.

To charge a 12V 20Ah battery, you need a solar panel of at least 100W. This panel produces about 5A. If you get 6 hours of sunlight daily, a 100W panel provides enough energy. Consider adjusting the panel size based on charging time, sunlight hours, and your energy usage for.

To charge a 12V 20Ah battery, you need a solar panel of at least 100W. This panel produces about 5A. If you get 6 hours of sunlight daily, a 100W panel provides enough energy. Consider adjusting the panel size based on charging time, sunlight hours, and your energy usage for optimal results. For a.

Use our solar panel size calculator to find out what size solar panel you need to charge your battery in desired time. Simply enter the battery specifications, including Ah, volts, and battery type. Also the charge controller type and desired charge time in peak sun hours into our calculator to get.

A Solar Panel and Battery Sizing Calculator is an invaluable tool designed to help you determine the optimal size of solar panels and batteries required to meet your energy needs. By inputting specific details about your energy consumption, this calculator provides tailored insights into the solar.

The main challenge is determining the right balance between solar panels to charge batteries and ensuring your battery capacity aligns with your energy needs. This guide covers how to calculate everything you need to set up an efficient, reliable solar power system, and we'll even walk through how.

In the realm of solar energy systems, the appropriate wattage of solar panels required for charging a 20 ampere-hour (20Ah) battery hinges on several critical factors. 1. Panel output must correspond to energy demands, encompassing battery capacity, depth of discharge, and daily energy consumption.

Determine Battery Capacity: Match the solar panel size to your battery's capacity,



typically measured in amp-hours (Ah), to ensure effective charging. Assess Daily Energy Needs: Calculate the total wattage of devices you intend to power to choose a solar panel that meets or exceeds this daily.



How big a solar panel should I use for a 20A lead-acid battery



[Best Battery Size Calculator For Solar And Off-Grid Systems](#)

Free battery size calculator - calculate the perfect battery capacity for your solar system, inverter, or car. Works with lithium-ion, lead-acid, and AGM batteries

[Request Quote](#)

[Solar Panel Size Calculator: What Size Panel Do I Need?](#)

Many battery manufacturers recommend a maximum charge current of for lead acid batteries with this capacity. To maximize your battery's lifespan, consider using a smaller ...

[Request Quote](#)



[What Size of Solar Panel to Charge a Battery: A Complete Guide ...](#)

Discover how to determine the perfect solar panel size for charging batteries in our comprehensive guide. Learn about battery capacity, daily energy demands, and sunlight ...

[Request Quote](#)



[What Size Solar Panel Do I Need to Charge a 12v Battery for Off ...](#)

Discover the right solar panel size to efficiently charge your 12V battery. Learn how to calculate wattage, consider battery capacity, and optimize your solar charging setup for maximum ...



[Request Quote](#)



[How Do You Calculate Solar Panel to Battery](#)

To calculate your daily energy needs, you'll want to add the wattage of all the devices you plan to power with your solar system. For example, you're running a 100-watt ...

[Request Quote](#)



[How to Calculate Solar Panel, Battery, and Inverter ...](#)

In general, your inverter capacity should be approximately the same size as the total wattage of your solar panels. This ensures that the ...

[Request Quote](#)



What Size Solar Panel to Charge a 20Ah Battery: Efficient ...

To charge a 12V 20Ah battery, you need a solar panel of at least 100W. This panel produces about 5A. If you get 6 hours of sunlight daily, a 100W panel provides enough energy. ...

[Request Quote](#)



[How many watts of solar panels are used](#)



[for a 20a ...](#)

With solar panels yielding an average of 100 watts under optimal conditions, one can gauge how long it would take to charge the ...

[Request Quote](#)



[How many watts of solar panels are used for a 20a battery](#)

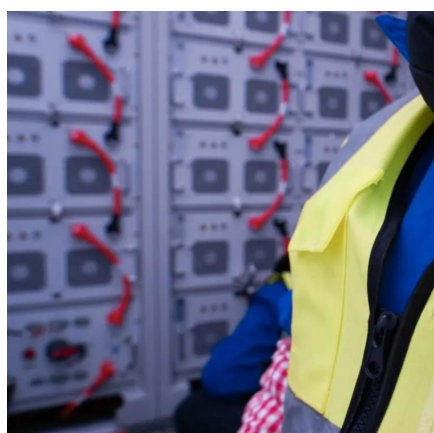
With solar panels yielding an average of 100 watts under optimal conditions, one can gauge how long it would take to charge the battery completely. Under ideal conditions, ...

[Request Quote](#)

[What Size Solar Panel Do I Need to Charge a 12v ...](#)

Discover the right solar panel size to efficiently charge your 12V battery. Learn how to calculate wattage, consider battery capacity, and optimize ...

[Request Quote](#)



Solar Panel Size Calculator

Specify the solar panel wattage you plan to use. The result will estimate how many panels you need to meet your energy goals. Enter the ...

[Request Quote](#)

[How Do You Calculate Solar Panel to](#)



[Battery](#)

To calculate your daily energy needs, you'll want to add the wattage of all the devices you plan to power with your solar system. For ...

[Request Quote](#)



[How to Calculate Solar Panel, Battery, and Inverter Size](#)

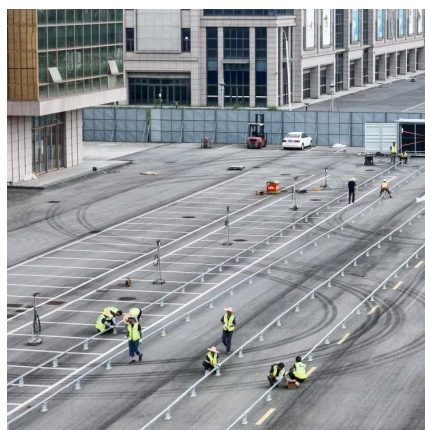
In general, your inverter capacity should be approximately the same size as the total wattage of your solar panels. This ensures that the inverter operates at its most efficient ...

[Request Quote](#)

[Solar Panel and Battery Sizing Calculator](#)

Specify the solar panel wattage you plan to use. The result will estimate how many panels you need to meet your energy goals. Enter the battery storage capacity, allowing the ...

[Request Quote](#)



[Solar Panel Size Calculator: What Size Panel Do I Need?](#)

Many battery manufacturers recommend a maximum charge current of for lead acid batteries with this ...

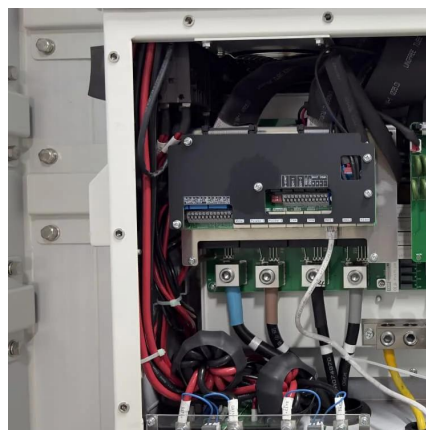
[Request Quote](#)

Solar Panel Size Calculator



Use our solar panel size calculator to find out the ideal solar panel size to charge your lead acid or lithium battery of any capacity and voltage. For example, 50ah, 100ah, ...

[Request Quote](#)





Contact Us

For catalog requests, pricing, or partnerships, please visit:

<https://www.energyinnovationday.pl>

Phone: +48 22 335 1273

Email: info@energyinnovationday.pl

Scan the QR code to contact us via WhatsApp.

