



How big a solar inverter should I use for a 100W solar panel





Overview

How big should a solar inverter be?

Generally, it's recommended to size the inverter to 80-100% of the DC system's rated capacity. Before determine the inverter size, the most important thing is to calculate your average daily power consumption (kWh) and calculate your solar panel array size to match your power consumption. You could follow our to make this estimation.

What kind of inverter do I need for a 100 watt solar panel?

You would need a 12 V DC to 220v AC, 300 to 600 Watt range inverter, or converter for the power generated from the 100-watt solar panel. The solar panel's power generation could be different based on various circumstances. What does a power inverter do?

The inverter is also known as the AC driver or Variable frequency drive.

Does a solar panel need a 12V inverter?

A 12V 100W solar panel needs a 12V 200W inverter to run AC powered appliances, and at least a 100ah battery to store energy. A 12V 5A PWM or MPPT charge controller is required to keep the battery from overcharging. With this system you can draw 100W from the inverter for 3 to 4 hours or 200W for 1 and half hours.

How many watts can a solar inverter draw?

A 12V 5A PWM or MPPT charge controller is required to keep the battery from overcharging. With this system you can draw 100W from the inverter for 3 to 4 hours or 200W for 1 and half hours. Calculating inverter sizes is the same no matter what the solar panel output is.



How big a solar inverter should I use for a 100W solar panel



[Solar Inverter Sizing Guide: How to Size Your Inverter](#)

Learn how to properly size your solar inverter with our complete guide. Discover the optimal DC-to-AC ratio and avoid costly ...

[Request Quote](#)

[What Size Solar Inverter Do I Need? A Quick ...](#)

Sizing Rule: Your inverter's peak capacity must exceed the highest surge demand. Example: If your total running load is 500 W but your AC needs ...

[Request Quote](#)



[What Size Inverter For a 100W Solar Panel?](#)

A 12V 100W solar panel needs a 12V 200W inverter to run AC powered appliances, and at least a 100ah battery to store energy. A 12V 5A PWM or MPPT charge controller is required to keep ...

[Request Quote](#)

[How to Choose the Right Size Solar Inverter: Step ...](#)

This guide walks you through calculating inverter size based on panel capacity, power usage, and safety margins. We use real ...

[Request Quote](#)



[What Size Inverter Do I Need for a 100 Watt Solar ...](#)

So for a 100W solar panel, the size of the inverter in this system should be greater than 100W and less than 125W. 2. Why is the ...

[Request Quote](#)



[Inverter Size Calculator - self2solar](#)

Determining the correct inverter size depends on your solar array's capacity and your household's power needs. Generally, the ...

[Request Quote](#)



[How To Size A Solar Inverter in 3 Easy Steps](#)

In this guide, we share 3 easy steps on how to size a solar inverter correctly. We explain the key concepts that determine solar inverter sizing including ...

[Request Quote](#)



[What Size Solar Inverter Do I Need? A](#)



[Quick Sizing Guide](#)

Sizing Rule: Your inverter's peak capacity must exceed the highest surge demand. Example: If your total running load is 500 W but your AC needs 2,400 W surge, choose an inverter with \geq

...

[Request Quote](#)



How to Choose the Right Size Solar Inverter: Step-by-Step with ...

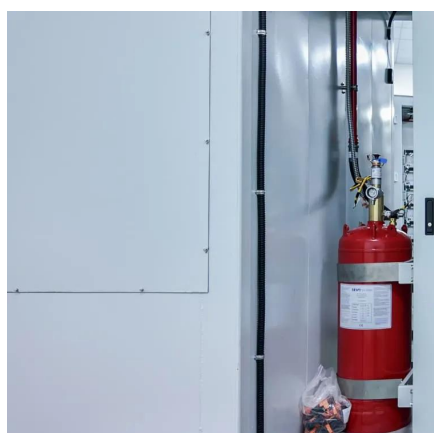
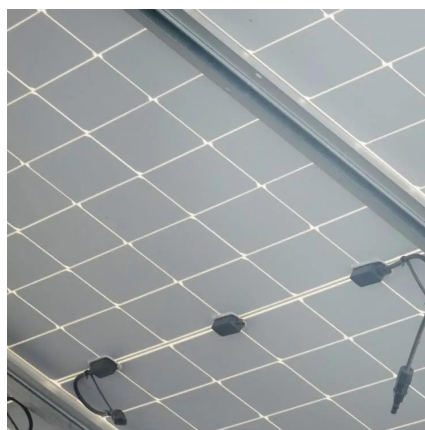
This guide walks you through calculating inverter size based on panel capacity, power usage, and safety margins. We use real examples from installations in Texas and ...

[Request Quote](#)

[What size inverter for 100 watt solar panel?](#)

For a 100-watt solar panel, the ideal inverter size is within the 300 to 600-watt range, specifically a 12V DC to 220V AC model. This is ...

[Request Quote](#)



[What size inverter for 100 watt solar panel?](#)

For a 100-watt solar panel, the ideal inverter size is within the 300 to 600-watt range, specifically a 12V DC to 220V AC model. This is crucial because the inverter serves as ...

[Request Quote](#)

[Solar Inverter Sizing Guide: How to Size](#)



[Your Inverter](#)

Learn how to properly size your solar inverter with our complete guide. Discover the optimal DC-to-AC ratio and avoid costly sizing mistakes.

[Request Quote](#)



[How To Size A Solar Inverter in 3 Easy Steps](#)

In this guide, we share 3 easy steps on how to size a solar inverter correctly. We explain the key concepts that determine solar inverter sizing including your power needs, the type and number ...

[Request Quote](#)

[What Size Inverter Do I Need for a 100 Watt Solar Panel](#)

Wondering what size inverter you need for a 100 watt solar panel? Here's how to find the right inverter and calculate its size.

[Request Quote](#)



[Inverter Size Calculator - self2solar](#)

Determining the correct inverter size depends on your solar array's capacity and your household's power needs. Generally, the inverter should be sized to match about ...

[Request Quote](#)

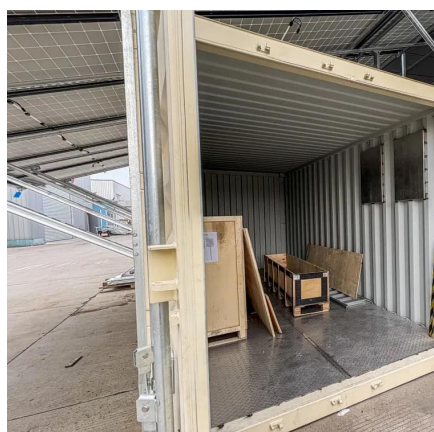
[What Size Inverter Do I Need for a 100](#)



[Watt Solar ...](#)

Wondering what size inverter you need for a 100 watt solar panel? Here's how to find the right inverter and calculate its size.

[Request Quote](#)



Solar Panel Inverter Size Calculator: Know What You Need , Angi

Planning to install solar panels? You'll need a solar inverter. Follow this guide to calculate the best solar panel inverter size for your system.

[Request Quote](#)

[What Size Inverter Do I Need for a 100 Watt Solar Panel](#)

So for a 100W solar panel, the size of the inverter in this system should be greater than 100W and less than 125W. 2. Why is the size of the inverter important? The main reason ...

[Request Quote](#)





Contact Us

For catalog requests, pricing, or partnerships, please visit:

<https://www.energyinnovationday.pl>

Phone: +48 22 335 1273

Email: info@energyinnovationday.pl

Scan the QR code to contact us via WhatsApp.

