



# How big a battery is needed for a 300W solar panel





## Overview

---

Does a 300W solar panel need a battery?

300W solar panels can run TVs, laptops and various appliances, so no wonder it is in demand in homes and RVs. Of course a solar panel doesn't work alone, and you need a battery to reserve energy. But how many batteries will you need?

A 300W solar panel needs at least a 100ah battery to draw 1000W.

Do you need a battery for a solar panel?

Of course a solar panel doesn't work alone, and you need a battery to reserve energy. But how many batteries will you need?

A 300W solar panel needs at least a 100ah battery to draw 1000W. A smaller battery is enough if you are drawing the power for a short period, but a bigger battery is needed for a longer current draw.

How much solar power do I Need?

So, a 150Ah lithium battery or 250Ah AGM battery would be suitable. To recharge your battery daily, divide your energy needs by average sun hours (e.g. 5 peak sun hours/day in most of Australia): Solar Panel Wattage = Daily Wh ÷ Sun Hours 1490 Wh ÷ 5 hrs = 298W □ So, aim for at least 400W of solar to replenish your battery daily.

How much sunlight does a 300W solar panel Draw?

Let's say you get 1500W of sunlight from your 300W solar panel (ideal weather). A 125ah battery will draw 1500W for an hour. A 6.5ah battery is enough for 1500W for 30 minutes (125 / 2 = 6.5). You can slow the discharge rate by reducing the inverter load or drawing power for brief periods only.



## How big a battery is needed for a 300W solar panel



### [How Many Batteries Do You Need For a 300W Solar Panel?](#)

Specify the solar panel wattage you plan to use. The result will estimate how many panels you need to meet your energy goals. Enter the ...

[Request Quote](#)

### [What Size Battery For 300w Solar Panel?](#)

In general, most small scale solar systems require 12V batteries, meaning that a 300W solar panel will likely need a 24V battery bank or two 12V batteries connected together ...

[Request Quote](#)



### [How Many Batteries Do You Need For a 300W Solar Panel?](#)

A 300W solar panel needs at least a 100ah battery to draw 1000W. A smaller battery is enough if you are drawing the power for a short period, but a bigger battery is needed for a longer ...

[Request Quote](#)



### [Solar Panel and Battery Sizing Calculator](#)

Specify the solar panel wattage you plan to use. The result will estimate how many panels you need to meet your energy goals. Enter the battery storage capacity, allowing the ...

[Request Quote](#)



## How Many Batteries for 300 Watt Solar Panel: A Complete Guide ...

To determine the number of batteries needed for a 300-watt solar panel, consider your daily energy intake and the battery capacity. Generally, you may need at least two 12-volt ...

[Request Quote](#)



## Sizing Your Solar System: Panel & Battery Calculators Simplified

To find the right battery size, convert watt-hours to amp-hours (Ah) using the formula:  $\text{Battery Ah} = (\text{Total Wh} \div \text{Battery Voltage})$  Now consider depth of discharge (DoD) ...

[Request Quote](#)



## How to Calculate Solar Panel, Battery, and Inverter Size

Determine how long you want your battery system to provide power during a grid outage or periods of low sunlight. This backup time will influence the battery capacity you ...

[Request Quote](#)



## How many ah batteries are suitable



## for 300 watt solar panels

Understanding energy requirements allows one to define the total watt-hours needed per day. Assuming the user requires 1,500 watt-hours (Wh) per day for basic ...

[Request Quote](#)



## [How Many Batteries Do I Need for a 300 Watt Solar Panel?](#)

Accurately determine the battery capacity required for your energy needs, factoring in system voltage and your 300W solar panel's recharge limits.

[Request Quote](#)

## [How to Calculate Battery Capacity for Solar System](#)

To calculate battery capacity for a solar system, divide your total daily watt-hours by depth of discharge and system voltage to get amp-hours needed. Battery capacity depends ...

[Request Quote](#)



## [What Size Battery For 300w Solar Panel?](#)

In general, most small scale solar systems require 12V batteries, meaning that a 300W solar panel will likely need a 24V battery ...

[Request Quote](#)

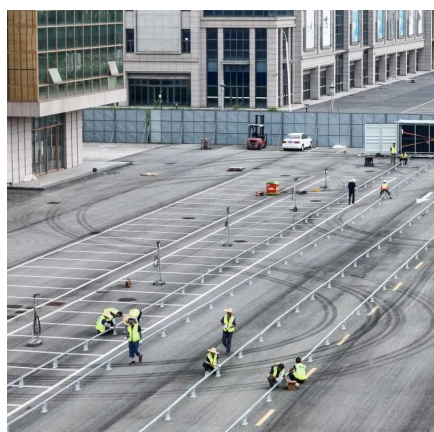
## How Much Battery Do I Need For



## Solar? A Complete Guide To ...

To size your solar battery bank accurately, you should consider several key factors that influence its capacity and performance. Understanding these factors provides a solid ...

[Request Quote](#)



### [How many ah batteries are suitable for 300 watt ...](#)

Understanding energy requirements allows one to define the total watt-hours needed per day. Assuming the user requires 1,500 watt ...

[Request Quote](#)



## Contact Us

---

For catalog requests, pricing, or partnerships, please visit:

<https://www.energyinnovationday.pl>

Phone: +48 22 335 1273

Email: [info@energyinnovationday.pl](mailto:info@energyinnovationday.pl)

Scan the QR code to contact us via WhatsApp.

