



High quality 220 gfcı breaker in Algeria





Overview

Buy SIEMENS Q220GF Ground Fault Circuit Interrupter, 20 Amp, 2-Pole GFCI Circuit Breaker Replaces QF220A online on Amazon.eg at best prices. ✓ Fast and Free Shipping ✓ Free Returns ✓ Cash on Delivery available on eligible purchase.

Buy SIEMENS Q220GF Ground Fault Circuit Interrupter, 20 Amp, 2-Pole GFCI Circuit Breaker Replaces QF220A online on Amazon.eg at best prices. ✓ Fast and Free Shipping ✓ Free Returns ✓ Cash on Delivery available on eligible purchase.

A 220V GFCI breaker (Ground Fault Circuit Interrupter) is a critical safety device in modern electrical systems, designed to protect against electric shock and fire hazards by detecting ground faults. These breakers monitor current imbalances between hot and neutral wires, cutting off power within.

Underwriters laboratories (UL) suggests that afci/GFCI Devices be tested every 30 days after installation to ensure they are properly working. Now the new self test & lockout feature enables the dual function circuit breaker to automatically and continuously test itself to ensure that it is working.

Siemens QF220 Ground Fault Circuit Interrupter 800300A01 20A The Siemens QF220 Ground Fault Circuit Interrupter (GFCI) 800300A01 20A is a high-performance safety device designed to protect electrical circuits and personnel. Need More Details?

If you'd like to check stock availability, request the.

Where to Find 220 gfci breaker factory Suppliers?

B2B buyers seeking reliable 220 gfci breaker factory suppliers can access global manufacturing hubs, digital platforms, and industry networks. This chapter outlines the most effective channels for identifying credible suppliers with proven.

Siemens GFCI circuit breakers are UL Listed and cUL Certified to provide Class A GFCI protection. Current imbalances of 4-6 mA or more between load conductors will cause the ground fault sensor to trip the circuit breaker. These circuit breakers offer Self-Test and Lockout features as required by.



The SIEMENS B220GF is a 20 Amp, 2-pole GFCI circuit breaker designed for efficient bolt-on installation. It offers ground fault protection, making it a reliable choice for safety in electrical systems. This breaker operates at a voltage of 120/240V and features a high interrupting capacity of.



High quality 220 gfci breaker in Algeria



[20A 2-Pole GFCI Thermal Circuit Breaker, LB220-G, Leviton](#)

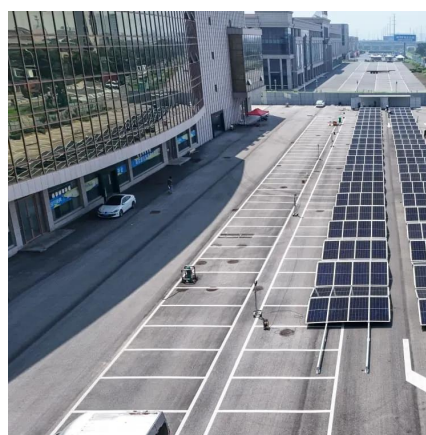
The Relevance Inspector will open in the Coveo Administration Console. 20A 2-Pole GFCI Branch Circuit Breaker with Hydraulic Magnetic Trip Technology and Plug-On Installation. Supports ...

[Request Quote](#)

GFEP220

CIRCUIT BREAKER SUPERSTORE® is the online leader of high-quality and hard to find circuit breakers and other electrical parts. Call 888-340-5979

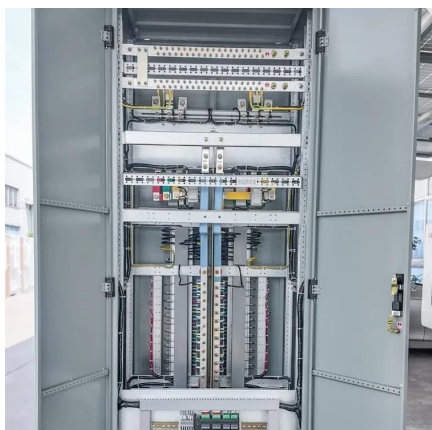
[Request Quote](#)



Siemens P220GFA Low Voltage Residential GFCI Circuit Breaker ...

The Siemens P220GFA is a low voltage residential Ground Fault Circuit Interrupter (GFCI) circuit breaker, designed to provide reliable protection against electrical shock hazards in residential ...

[Request Quote](#)



SIEMENS QF220A Ground Fault Circuit Interrupter, 20 Amp, 2 ...

Now the new self test & lockout feature enables the dual function circuit breaker to automatically and continuously test itself to ensure that it is working properly.



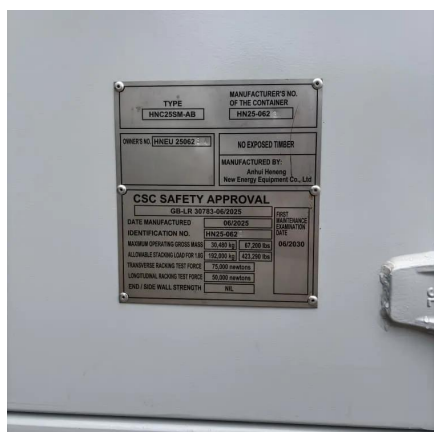
[Request Quote](#)



[CHFP220GF , Eaton CH GFCI circuit breaker , Eaton](#)

Authenticated: The product is verified as being authentic; however, this does not guarantee the condition or fit for purpose of the product. Note: If file (s) are missing from the .zip download ...

[Request Quote](#)



Siemens Qf220 Ground Fault Circuit Interrupter 800300A01 20A

The Siemens QF220 Ground Fault Circuit Interrupter 800300A01 20A ensures reliable protection against electrical faults and enhances safety for personnel and equipment. Trusted for quality ...

[Request Quote](#)



220V GFCI Breakers

Enhance safety with 220v gfcı breakers. Reliable residual current devices for home and commercial use. Shop high-quality, durable, and efficient solutions.

[Request Quote](#)



[SIEMENS B220GF 20 Amp 2-Pole GFCI](#)



[Circuit Breaker](#)

The SIEMENS B220GF is a 20 Amp, 2-pole GFCI circuit breaker designed for efficient bolt-on installation. It offers ground fault protection, making it a reliable choice for safety in electrical ...

[Request Quote](#)



SIEMENS Q220GF Ground Fault Circuit Interrupter, 20 Amp, 2-Pole GFCI

These circuit breakers offer Self-Test and Lockout features as required by UL 943, enabling the GFCI to automatically and continuously test itself to ensure that it is working properly.

[Request Quote](#)



[Siemens P220GFA Low Voltage Residential GFCI Circuit ...](#)

The Siemens P220GFA is a low voltage residential Ground Fault Circuit Interrupter (GFCI) circuit breaker, designed to provide reliable protection against electrical shock hazards in residential ...

[Request Quote](#)



SIEMENS Q220GF Ground Fault Circuit Interrupter, 20 Amp, 2 ...

These circuit breakers offer Self-Test and Lockout features as required by UL 943, enabling the GFCI to automatically and continuously test itself to ensure that it is working properly.

[Request Quote](#)



[220 GFCI Breaker Factory: Reliable &](#)



[Certified](#)

Find trusted 220 GFCI breaker factories with verified suppliers. Get certified, customizable options for industrial and residential use. Click to explore top-rated ...

[Request Quote](#)





Contact Us

For catalog requests, pricing, or partnerships, please visit:

<https://www.energyinnovationday.pl>

Phone: +48 22 335 1273

Email: info@energyinnovationday.pl

Scan the QR code to contact us via WhatsApp.

