



High power solar panel size





Overview

While commercial and utility-scale panels can exceed 700W, residential applications are typically limited to panels in the 450W to 670W range due to size, weight, and handling constraints, with most standard residential installations using panels in the 450-550W range.

While commercial and utility-scale panels can exceed 700W, residential applications are typically limited to panels in the 450W to 670W range due to size, weight, and handling constraints, with most standard residential installations using panels in the 450-550W range.

Space Efficiency Drives Value: High-wattage panels (550W+) are most cost-effective for homes with limited roof space, providing up to 30 square feet of space savings compared to standard 400W panels for equivalent power output. Technology Convergence in 2025: N-type TOPCon cells have become the.

Today in 2025, we're seeing commercially available panels reaching close to 750W, and early production modules already exceeding 760W, with several manufacturers targeting 800W+ within the next two years. A key factor in this leap forward has been the transition to larger wafer formats, such as M10.

Standard residential solar panels are typically around 5.8 feet long by 3.5 feet wide and weigh between 40 to 50 pounds. However, the exact dimensions depend heavily on the panel's technology, wattage, and the manufacturer's design. Understanding these specifications is crucial for determining roof.

Here are the most powerful, highest wattage solar panels currently available, with all the analysis you need to pick the best model for your home. What kind of home do you live in?

The more electricity your solar panel system produces, the more money you can save on your energy bills – so it's.

Understanding solar panel dimensions is crucial for planning your solar system installation, maximizing efficiency, and ensuring compatibility with your available space. In this blog, we'll break down the standard sizes of solar panels, explain how panel dimensions impact performance, and help you.



Highest Wattage Solar Panels utilize advanced solar cell technology and optimized designs to capture and convert more sunlight into electricity. With a greater number of highly efficient monocrystalline or polycrystalline cells, half-cut cells reducing resistive losses, and multi-busbars improving.



High power solar panel size



[The 11 most powerful solar panels \[2026\]](#)

Here are the most powerful, highest wattage solar panels currently available, with all the analysis you need to pick the best model ...

[Request Quote](#)

Understanding Solar Panel Dimensions In 2025: A Complete Size

...

Explore the most common solar panel dimensions in 2025, including residential and commercial sizes. Learn how solar panel size dimensions affect power, installation, and ...

[Request Quote](#)



[Perfect Solar Panel Sizes for Your Home \(Expert Sizing Guide\)](#)

Most residential solar panels measure between 65 to 75 inches long and 39 to 41 inches wide, delivering power outputs ranging from 250 to 400 watts per panel.

[Request Quote](#)

Most powerful solar panels 2025

Here, we list the most powerful panels and look at the benefits of using larger format panels on utility-scale solar farms and commercial solar systems.

[Request Quote](#)



[Highest Wattage Solar Panels: Everything You Need to Know](#)

In the commercial sector, the highest wattage solar panels currently available on the market are 700W Wattage Solar Panels. These panels, featuring a remarkable 144 half-cut solar cells, ...

[Request Quote](#)

[Detailed Guide to Solar Panel Size & Dimensions](#)

Choosing the proper system is not only about the solar panel dimensions. You should also consider wattage, number of cells, layout possibilities, and energy consumption. ...

[Request Quote](#)



[Understanding Solar Panel Dimensions In 2025: A ...](#)

Explore the most common solar panel dimensions in 2025, including residential and commercial sizes. Learn how solar panel size ...

[Request Quote](#)



Solar panels size



For a very long time--basically the entire 2000s and 2010s--solar panels were built using silicon squares that were roughly 6 inches by 6 inches (156 mm).

[Request Quote](#)



[The Ultimate Guide to Solar Panel Size, Weight](#)

Standard residential solar panels are typically around 5.8 feet long by 3.5 feet wide and weigh between 40 to 50 pounds. However, the ...

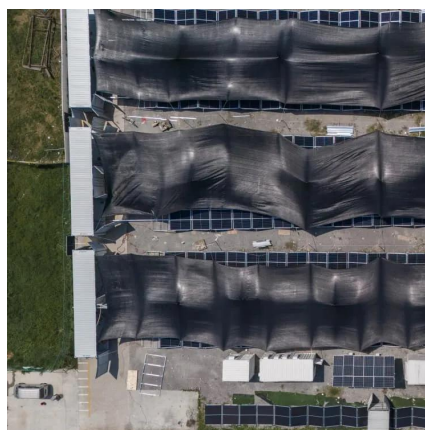
[Request Quote](#)



The Ultimate Guide to Solar Panel Size, Weight & Wattage (2025)

Standard residential solar panels are typically around 5.8 feet long by 3.5 feet wide and weigh between 40 to 50 pounds. However, the exact dimensions depend heavily on the ...

[Request Quote](#)



[Highest Watt Residential Solar Panels 2025 ...](#)

While commercial and utility-scale panels can exceed 700W, residential applications are typically limited to panels in the 450W to ...

[Request Quote](#)

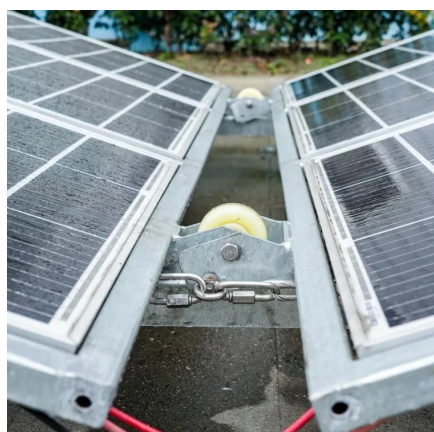


[The 11 most powerful solar panels \[2026\]](#)



Here are the most powerful, highest wattage solar panels currently available, with all the analysis you need to pick the best model for your home.

[Request Quote](#)



Complete Guide to Solar Panel Size

Understand 60-cell, 72-cell, and half-cut solar panel sizes, their wattage, and roof requirements. Optimize your Southern California home's energy system today. Switching to ...

[Request Quote](#)

[Highest Watt Residential Solar Panels 2025 \[Complete Guide\]](#)

While commercial and utility-scale panels can exceed 700W, residential applications are typically limited to panels in the 450W to 670W range due to size, weight, and ...

[Request Quote](#)





Contact Us

For catalog requests, pricing, or partnerships, please visit:

<https://www.energyinnovationday.pl>

Phone: +48 22 335 1273

Email: info@energyinnovationday.pl

Scan the QR code to contact us via WhatsApp.

