



High-power AP outdoor base station installation





Overview

This article describes the best practices for mounting outdoor access points (APs). For full installation instructions, read the ANU B350 Outdoor Access Point Installation Guide. Most defective access point claims are damages from lighting strikes caused by improper or.

This article describes the best practices for mounting outdoor access points (APs). For full installation instructions, read the ANU B350 Outdoor Access Point Installation Guide. Most defective access point claims are damages from lighting strikes caused by improper or.

This article mainly provides you with the installation steps for the outdoor wireless access point, which mainly involves wall-mounting and pole-mounting methods. Before we begin, let's take a moment to explore the potential challenges you might face during outdoor deployments. While outdoor access.

The HPE Aruba Networking 580 Series outdoor wireless access points (AP-584, AP-585 and AP-587) support the IEEE 802.11ax standard, delivering high performance with the MIMO (Multiple-Input, Multiple-Output) and OFDMA (Orthogonal Frequency Division Multiple Access) technologies, while also.

There are basically four options in outdoor AP installation: wall mounting, pole mounting, corner mounting and roof mounting. Wall mounting is one of the most common and fastest methods to install the access points to the outside wall, but multiple holes need to be drilled to let the Ethernet.

Optionally, the UniFi AP may be installed on a wall using additional hardware. Perform the steps for the appropriate installation: The Mounting Bracket must be mounted directly to a wood stud or other structurally stable surface using four fasteners (not included). Note: Ensure at least two holes.

TP-LINK's 5GHz 300Mbps * Outdoor Wireless Base Station is specifically designed to provide an effective solution for outdoor wireless networking applications. With its centralized management platform and high degree of flexibility, it is the ideal choice for providing point-to-point.

This article describes the best practices for mounting outdoor access points (APs).



For full installation instructions, read the ANU B350 Outdoor Access Point Installation Guide. Most defective access point claims are damages from lightning strikes caused by improper or missing good earth grounding. How difficult is outdoor access point installation?

While outdoor access point installation is generally manageable, it does come with its set of challenges. Here is a summary of the most common issues encountered during installation: Lack of Power Supply: One of the main difficulties in outdoor deployments is ensuring a reliable power source.

How do you install an outdoor access point?

The Process of Outdoor Access Point Installation Use a marker pen to mark the location of the installation holes on the wall. Use an impact drill to drill holes in the wall according to the marked positions. Use a hammer to tap the expansion bolts vertically into the hole. Fix the bracket on the wall with four M6 screws.

Should APS be mounted on a pole?

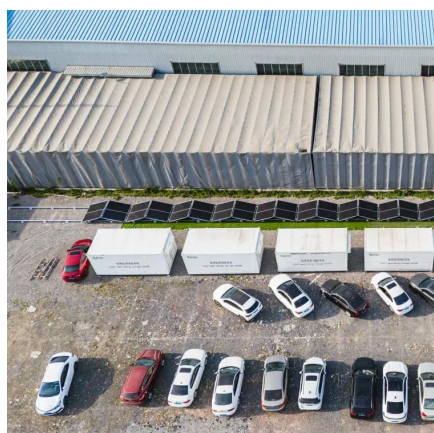
Pole mounting is a good option when installing the APs away from the buildings, which is more common in a wireless mesh system where no cables need to be pulled to each location. It's ideal for providing a 360° overall coverage for your premises, but if the access point is mounted too close to the pole, the RF will be severely attenuated.

What are the different types of outdoor AP installation options?

There are basically four options in outdoor AP installation: wall mounting, pole mounting, corner mounting and roof mounting.



High-power AP outdoor base station installation



UAP-AC-Outdoor Quick Start Guide

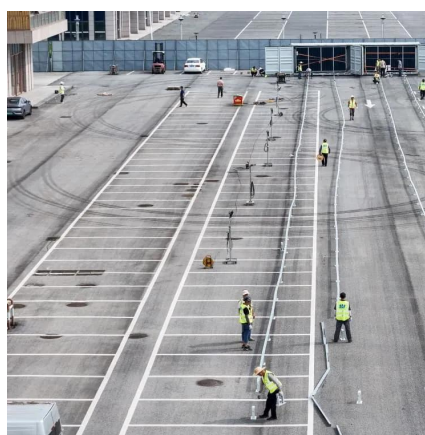
We recommend that you protect your networks from harmful outdoor environments and destructive ESD events with industrial-grade, shielded Ethernet cable from Ubiquiti.

[Request Quote](#)

Outdoor Access Point High Power - 12db Omni WiFi Antenna kit

The o2Surf Access Point includes all necessary parts to install a high power, sensitive, 2.4 GHz public or private access point, which is ideal for RV Parks, Marinas, Ranches, Farms and rural ...

[Request Quote](#)



[Quick Installation Guide-Outdoor Wireless AP Kits-HW6100](#)

This document provides instructions for installing an outdoor wireless access point base station kit. It describes: 1) Attaching the antenna, lightning arrester, and mounting brackets to the ...

[Request Quote](#)



[Installation Guide for Outdoor Access Points](#)

Estimate The Required Coverage Areas and Bandwidth Needs
Identify The Mounting Locations For Outdoor APs
Install The Poe Surge Protectors For Lightning Protection
The mounting options and locations somehow have a great impact on what

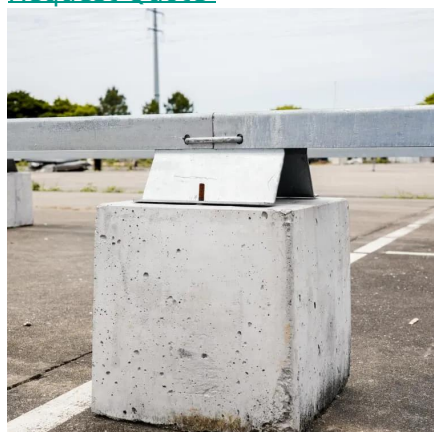


the final design will be and determine whether it could meet the required coverage areas. There are basically four options in outdoor AP installation: wall mounting, pole mounting, corner mounting and roof mounting. Wall mounting is one of the most common and fastest methods to See more on fastcabling Scribd

Quick Installation Guide- Outdoor Wireless AP Kits ...

This document provides instructions for installing an outdoor wireless access point base station kit. It describes: 1) Attaching the antenna, lightning ...

[Request Quote](#)



AP-580_Install_Guide

Mounting instructions for the antennas for the AP-584 access points are provided with the antennas. The mounting must be consistent with the instructions provided to ensure ...

[Request Quote](#)

Step-by-Step Outdoor Access Point Installation Guide

This comprehensive guide covers the step-by-step process for outdoor access point installation to provide reliable network coverage in open areas such as campuses or parks.

[Request Quote](#)



Outdoor AP installation recommendations

It is recommended for AP outdoor installation to protect the AP as well as the indoor equipment electrical surges. Surges that can reach the internal ...

[Request Quote](#)



[Installation Guide for Outdoor Access Points](#)

Since the fiber optic cables can only transmit data over the long cable runs, to install the outdoor APs in places where there's no power source available, you can either run ...

[Request Quote](#)



[Best practices for mounting outdoor access points](#)

This article describes the best practices for mounting outdoor access points (APs). For full installation instructions, read the ANU B350 Outdoor Access Point Installation Guide.

[Request Quote](#)



[Step-by-Step Outdoor Access Point Installation ...](#)

This comprehensive guide covers the step-by-step process for outdoor access point installation to provide reliable network coverage ...

[Request Quote](#)



[5GHz 300Mbps Outdoor Wireless Base](#)



Station

Up to 8% cash back · Pharos Base Stations works seamlessly with TP-LINK dish and sector antennas to provide efficient ...

[Request Quote](#)

Video Series: Best Practices for Installing Outdoor Wireless ...

This video series outlines the various best practices to be followed and common pitfalls to be avoided while installing outdoor wireless access points.

[Request Quote](#)



5GHz 300Mbps Outdoor Wireless Base Station

Pharos Base Stations works seamlessly with TP-LINK dish and sector antennas to provide efficient PtP and PtMP data transmission. Pharos Base Stations also feature a built-in ...

[Request Quote](#)



Outdoor AP installation recommendations . Knowledge Base

It is recommended for AP outdoor installation to protect the AP as well as the indoor equipment electrical surges. Surges that can reach the internal equipment from the outside, or least ...

[Request Quote](#)





Contact Us

For catalog requests, pricing, or partnerships, please visit:

<https://www.energyinnovationday.pl>

Phone: +48 22 335 1273

Email: info@energyinnovationday.pl

Scan the QR code to contact us via WhatsApp.

