



Flywheel energy storage field capacity





Overview

Flywheel energy storage systems can store significant amounts of energy, ranging from a few kilowatt-hours to a few megawatt-hours. The actual capacity, however, is contingent on several factors including flywheel design, material composition, rotational speed, and size.

Flywheel energy storage systems can store significant amounts of energy, ranging from a few kilowatt-hours to a few megawatt-hours. The actual capacity, however, is contingent on several factors including flywheel design, material composition, rotational speed, and size.

Flywheel energy storage (FES) works by spinning a rotor (flywheel) and maintaining the energy in the system as rotational energy. When energy is extracted from the system, the flywheel's rotational speed is reduced as a consequence of the principle of conservation of energy; adding energy to the.

They use very large flywheels with a mass in the order of 100 tonnes. These are directly connected to a synchronous condenser in order to provide grid inertia. Their main advantage is their immediate response, since the energy does not need to pass any power electronics. However, only a small.

The rapid growth of renewable energy sources like photovoltaic solar and wind generation is driving the need for cost-effective energy storage to capture energy during peak generation periods so it can be used during peak demand periods. The available solutions today have many drawbacks including.

Yes, with grid-forming drive. 2.2 m diameter x 7 m deep, 6 m of which buried. No flammable electrolyte or gaseous hydrogen release. Flywheel – 40 years. Power conversion components on 10-year replacement cycle. £750k per 1 MW, 2 MWh system. Equipment installation up to low voltage connection point.

Flywheel energy storage systems can store significant amounts of energy, ranging from a few kilowatt-hours to a few megawatt-hours. The actual capacity, however, is contingent on several factors including flywheel design, material composition, rotational speed, and size. Notably, flywheels.

Energy storage flywheels are usually supported by active magnetic bearing (AMB)



systems to avoid friction loss. Therefore, it can store energy at high efficiency over a long duration. Although it was estimated in [3] that after 2030, li-ion batteries would be more cost-competitive than any.



Flywheel energy storage field capacity



[How much electricity can flywheel energy storage store](#)

Flywheel energy storage systems can store significant amounts of energy, ranging from a few kilowatt-hours to a few megawatt-hours. The actual capacity, however, is ...

[Request Quote](#)

Applications of flywheel energy storage system on load frequency

Optimal capacity configurations of FESS on power generations including dynamic characteristics, technical research, and capital investigations are presented. Applications and ...

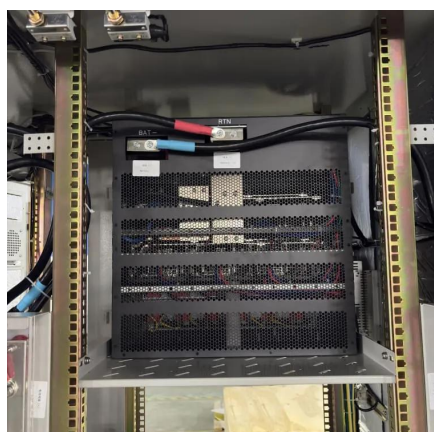
[Request Quote](#)



[China Connects World's Largest Flywheel Energy Storage ...](#)

Previously, the largest flywheel energy storage system was the Beacon Power flywheel station in Stephentown, New York, with a capacity of 20 MW. Now, with Dinglun's 30 ...

[Request Quote](#)



[Flywheel Systems for Utility Scale Energy Storage](#)

Flywheel Systems for Utility Scale Energy Storage is the final report for the Flywheel Energy Storage System project (contract number EPC-15-016) conducted by Amber Kinetics, Inc. The ...



[Request Quote](#)



A review of flywheel energy storage systems: state of the art ...

Primary candidates for large-deployment capable, scalable solutions can be narrowed down to three: Li-ion batteries, supercapacitors, and flywheels. The lithium-ion ...

[Request Quote](#)



[Grid-Scale Flywheel Kinetic Energy Storage Systems](#)

£750k per 1 MW, 2 MWh system. Equipment installation up to low voltage connection point. switchgear, substation. Includes excavation for flywheel.

[Request Quote](#)



Technology: Flywheel Energy Storage

Suitable fields of application FESS is used for short-time storage and typically offered with a charging/discharging duration between 20 seconds and 20 minutes. However, one 4-hour ...

[Request Quote](#)



Flywheel storage power system



China has the largest grid-scale flywheel energy storage plant in the world with 30 MW capacity. The system was connected to the grid in 2024 and it was the first such system in China.

[Request Quote](#)



Flywheel energy storage

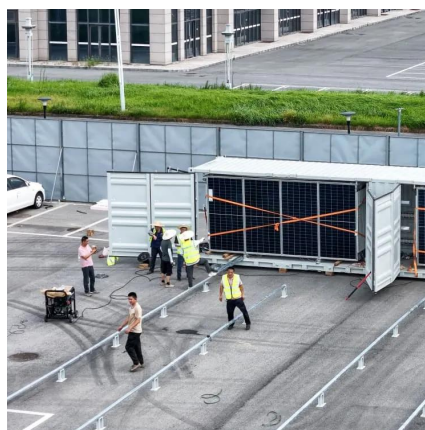
First-generation flywheel energy-storage systems use a large steel flywheel rotating on mechanical bearings. Newer systems use carbon-fiber composite rotors that have a higher ...

[Request Quote](#)

Flywheel Energy Storage in Action

Explore real-world examples and case studies of flywheel energy storage in renewable energy systems, and learn from the successes and challenges of implementing this ...

[Request Quote](#)





Contact Us

For catalog requests, pricing, or partnerships, please visit:

<https://www.energyinnovationday.pl>

Phone: +48 22 335 1273

Email: info@energyinnovationday.pl

Scan the QR code to contact us via WhatsApp.

