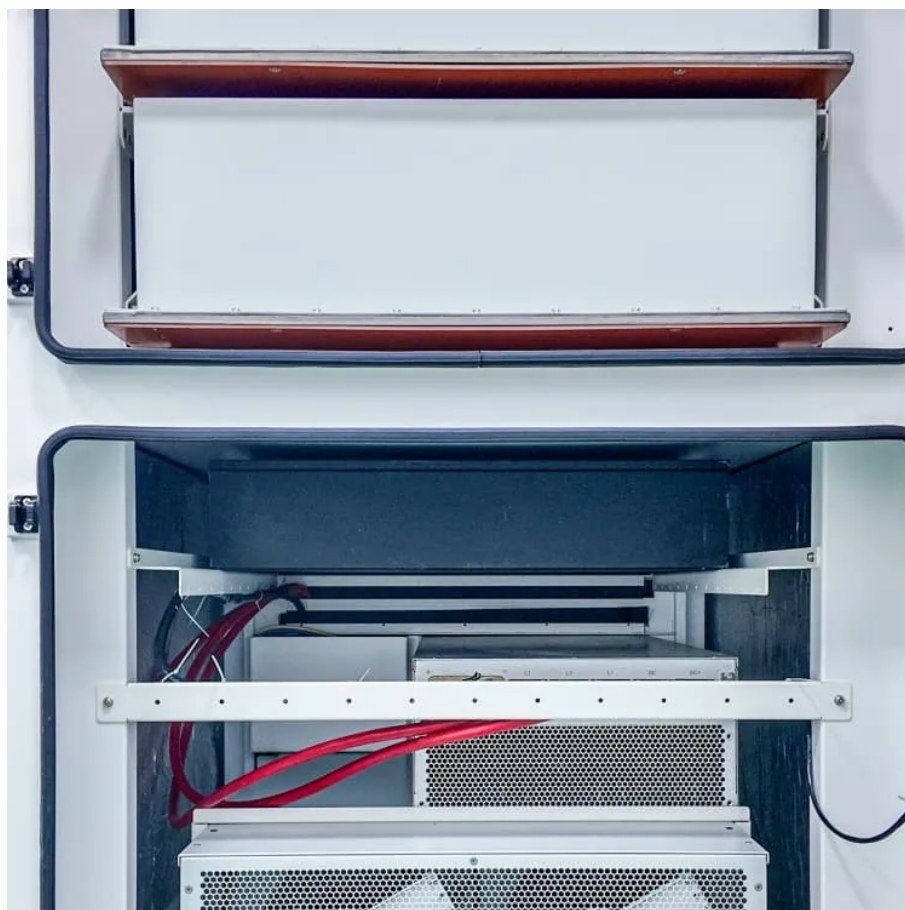




# Ethiopia Communication Wind Power Base Station Manufacturer





## Overview

---

The power station is owned by the national electricity utility company, (EEP). The station comprises 29 energy-generating wind mills, each rated at 3.45 megawatts capacity, for a total of 100 megawatts at maximum output. The generated energy will be integrated into Ethiopia's national electricity grid, through a substation to be built by the state-owned EEP, with a loan of US\$10 million, borrowed from the (AfDB). Assela Wind.

Constructed by the Spanish-German company Siemens Gamesa, the Assela wind farm also exemplifies the European Global Gateway strategy, which utilizes finance and expertise from public and private Team Europe partners to develop smart, clean, and secure energy connections worldwide.

Constructed by the Spanish-German company Siemens Gamesa, the Assela wind farm also exemplifies the European Global Gateway strategy, which utilizes finance and expertise from public and private Team Europe partners to develop smart, clean, and secure energy connections worldwide.

Today, Global Gateway with its Team Europe partner Denmark has reached a significant milestone in Ethiopia with the Assela wind farm: its first turbines have started feeding power into the national grid of Ethiopia. By the end of 2025, once all turbines are fully operational, the wind farm will.

Assela, Ethiopia – 22 May 2025 – The Assela 100 MW wind farm has reached a significant milestone as its first turbines have started feeding power into Ethiopia's national grid. By the end of 2025, when all 29 turbines are fully operational, the wind farm will generate over 300 GWh of clean and.

Assela Wind Power Station is a 100 MW (130,000 hp) wind farm, under construction in the Oromia Region of Ethiopia. [1] The power station is located near the town of Iteya, the capital of Oromia Region, approximately 140 kilometres (87 mi), southeast of Addis Ababa, the nation's capital city. [1][2].

Key Figures & Findings: Ethiopia has begun receiving electricity from its newest large-scale wind project as the Assela Wind Farm delivers first power to the national grid. Located in the Oromia region, 150 km south of Addis Ababa, the 100-MW farm is fully owned by state utility Ethiopian Electric.

5kw wind solar diesel hybrid system supply power for a communication base



Installation type: Ground mounting frame. In order to ensure the power generation, the best inclination angle shall be determined according to the geographical location of different regions and the actual situation. In order to.

The power station is owned by the national electricity utility company, (EEP). The station comprises 29 energy-generating wind mills, each rated at 3.45 megawatts capacity, for a total of 100 megawatts at maximum output. The generated energy will be integrated into Ethiopia's national electricity. Where is Ethiopian power station located?

The power station is located near the town of Iteya, the capital of Oromia Region, approximately 140 kilometres (87 mi), southeast of Addis Ababa, the nation's capital city. Overview[edit] The power station is owned by the national electricity utility company, Ethiopian Electric Power(EEP).

Are Ethiopia's energy ambitions regional?

Ethiopia's energy ambitions are increasingly regional in scope, as electricity exports have generated \$220 million in revenue within just nine months—double the earnings recorded during the same period last year.

How much electricity will Assela wind power station supply?

Assela Wind Power Station's annual energy output will be capable of supplying 300,000 Kilo-Watt-Hours of electricity, enough to power 400,000 Ethiopian homes. Construction[edit] The Engineering, Procurement and Construction contract was awarded to Siemens Gamesa, the Spanish subsidiary of Siemens, the German conglomerate.

How will Ethiopia diversify its energy mix?

Looking ahead, Ethiopia is set to further diversify its energy mix by scaling up solar and geothermal projects, complementing its strong hydropower and wind investments. The government is also focusing on strengthening public-private partnerships to accelerate project implementation and attract global expertise.



## Ethiopia Communication Wind Power Base Station Manufacturer



### Ethiopia Emerges as Africa's Renewable Energy Powerhouse ...

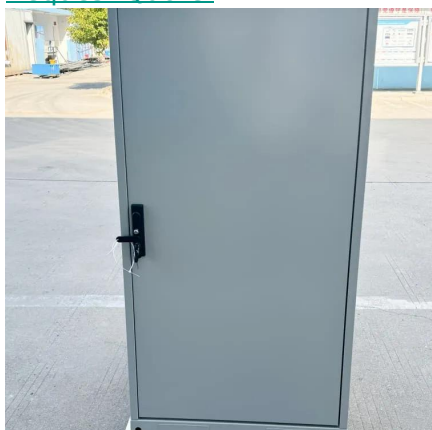
The Asella Wind Farm, developed by Ethiopian Electric Power (EEP), has officially begun generating electricity, with three of its 29 turbines now operational.

[Request Quote](#)

### 5kw wind solar diesel hybrid system supply power for a communication base

Application: 5kw wind solar diesel hybrid system supply power for a communication base station in Ethiopia with no state grid coverage. System characteristics: high transferring exchange, stable ...

[Request Quote](#)



### Global Gateway and Denmark power up Ethiopia's future with ...

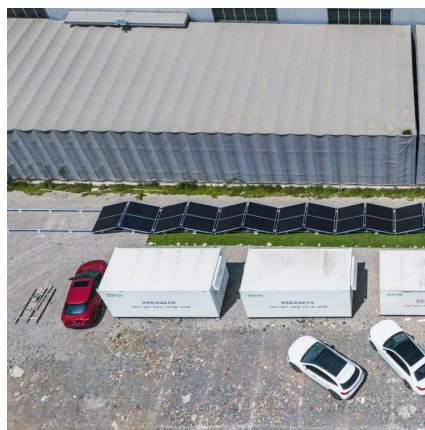
Today, Global Gateway with its Team Europe partner Denmark has reached a significant milestone in Ethiopia with the Assela wind farm: its first turbines have started ...

[Request Quote](#)

### [Feasibility Analysis and Development of Stand ...](#)

This paper proposed a standalone solar/wind/micro-hydro hybrid power generation system to electrify Ethiopian remote areas that ...

[Request Quote](#)



## Assela Wind Power Station

The power station is owned by the national electricity utility company, Ethiopian Electric Power (EEP). The station comprises 29 energy-generating wind mills, each rated at 3.45 megawatts ...

[Request Quote](#)



## [The Assela Wind Farm Delivers First Power to ...](#)

Constructed by the Spanish-German company Siemens Gamesa, the Assela wind farm also exemplifies the European Global ...

[Request Quote](#)



## Ethiopia Emerges as Africa's Renewable Energy Powerhouse through Bold

The Asella Wind Farm, developed by Ethiopian Electric Power (EEP), has officially begun generating electricity, with three of ...

[Request Quote](#)

## Feasibility Analysis and Development



## of Stand-Alone Hybrid Power ...

This paper proposed a standalone solar/wind/micro-hydro hybrid power generation system to electrify Ethiopian remote areas that are far from the national utility grid.

[Request Quote](#)



## Global Gateway and Denmark power up Ethiopia's future with Assela Wind

Today, Global Gateway with its Team Europe partner Denmark has reached a significant milestone in Ethiopia with the Assela wind farm: its first turbines have started ...

[Request Quote](#)

## Assela Wind Powers Ethiopian Grid

Located in the Oromia region, 150 km south of Addis Ababa, the 100-MW farm is fully owned by state utility Ethiopian Electric Power (EEP) and financed by Denmark via a ...

[Request Quote](#)



## The Assela Wind Farm Delivers First Power to Ethiopia's national ...

Constructed by the Spanish-German company Siemens Gamesa, the Assela wind farm also exemplifies the European Global Gateway strategy, which utilizes finance and ...

[Request Quote](#)



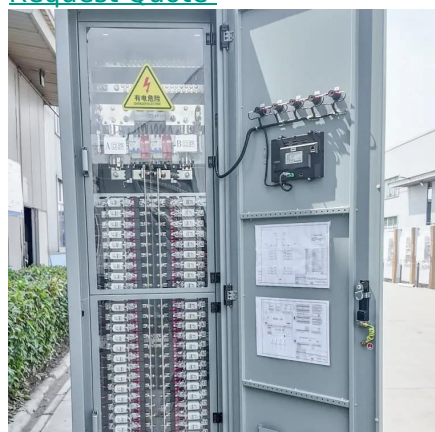
## Assela Wind Power Station



The power station is owned by the national electricity utility company, Ethiopian Electric Power (EEP). The station comprises 29 energy-generating wind mills, each rated at 3.45 megawatts capacity, for a total of 100 megawatts at maximum output. The generated energy will be integrated into Ethiopia's national electricity grid, through a substation to be built by the state-owned EEP, with a loan of US\$10 million, borrowed from the African Development Bank (AfDB). Assela Wind ...



[Request Quote](#)



### [5kw wind solar diesel hybrid system supply power for a ...](#)

Application: 5kw wind solar diesel hybrid system supply power for a communication base station in Ethiopia with no state grid coverage. System characteristics: high transferring exchange, stable ...

[Request Quote](#)

## 400MW WIND PARK FOR ETHIOPIA

Emerging markets in Africa and Latin America are adopting industrial storage solutions for peak shaving and backup power, with typical payback periods of 2-4 years.

[Request Quote](#)



### [Ethiopia base station wind power supply communication](#)

The power station is owned by the national electricity utility company, (EEP). The station comprises 29 energy-generating wind mills, each rated at 3.45 megawatts capacity, for a total ...

[Request Quote](#)

## Assela Wind Powers Ethiopian Grid



Located in the Oromia region, 150 km south of Addis Ababa, the 100-MW farm is fully owned by state utility Ethiopian Electric Power ...

[Request Quote](#)



## ASSELA WIND FARM

Developed by Ethiopian Electric Power (EEP) with financial support from the Danish government. Its primary aim is to diversify Ethiopia's electricity mix, which currently relies heavily on ...

[Request Quote](#)



## Contact Us

---

For catalog requests, pricing, or partnerships, please visit:

<https://www.energyinnovationday.pl>

Phone: +48 22 335 1273

Email: [info@energyinnovationday.pl](mailto:info@energyinnovationday.pl)

Scan the QR code to contact us via WhatsApp.

