



# Enterprise power storage equipment occupies an area of





## Overview

---

Commercial and Industrial (C&I) Energy Storage, fully referred to as commercial and industrial user-side energy storage, is an energy storage system specifically deployed in scenarios such as factories, industrial parks, shopping malls, and office buildings.

Commercial and Industrial (C&I) Energy Storage, fully referred to as commercial and industrial user-side energy storage, is an energy storage system specifically deployed in scenarios such as factories, industrial parks, shopping malls, and office buildings.

How much land does a pumped storage power station occupy?

A pumped storage power station typically occupies a substantial amount of land, primarily due to the requirements for reservoir creation, access roads, and ancillary infrastructure. 1. The size of reservoirs can vary significantly, ranging.

Commercial and Industrial (C&I) Energy Storage, fully referred to as commercial and industrial user-side energy storage, is an energy storage system specifically deployed in scenarios such as factories, industrial parks, shopping malls, and office buildings. Its core positioning is as an.

Electrical Energy Storage (EES) systems store electricity and convert it back to electrical energy when needed. 1 Batteries are one of the most common forms of electrical energy storage. The first battery, Volta's cell, was developed in 1800. 2 The U.S. pioneered large-scale energy storage with the.

Energy can be stored in a variety of ways, including: Pumped hydroelectric. Electricity is used to pump water up to a reservoir. When water is released from the reservoir, it flows down through a turbine to generate electricity. Compressed air. Electricity is used to compress air at up to 1,000.

Battery storage power stations store electrical energy in various types of batteries such as lithium-ion, lead-acid, and flow cell batteries. These facilities require efficient operation and management functions, including data collection capabilities, system control, and management capabilities.



Energy storage systems are crucial for improving the flexibility, efficiency, and reliability of the electrical grid. They are crucial to integrating renewable energy sources, meeting peak demand, increasing power quality, and ensuring power stability. Among the many grid storage technologies. What is electrical energy storage (EES)?

Electrical Energy Storage (EES) systems store electricity and convert it back to electrical energy when needed. 1 Batteries are one of the most common forms of electrical energy storage.

What are energy storage solutions for electricity generation?

Energy storage solutions for electricity generation include pumped-hydro storage, batteries, flywheels, compressed-air energy storage, hydrogen storage and thermal energy storage components. The ability to store energy can facilitate the integration of clean energy and renewable energy into power grids and real-world, everyday use.

What are energy storage devices & how do they work?

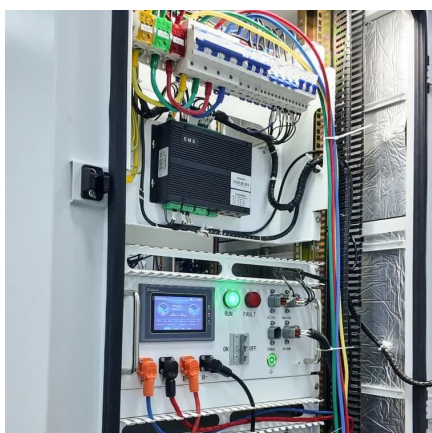
During these times, energy storage devices can swiftly release stored electricity to the grid, relieving strain on power plants and avoiding the need to activate additional, typically inefficient and polluting, peaking power plants.

What are the core functions of energy storage power stations?

In addition to these core functions, functions such as anti-backflow protection, support for parallel/off-grid operation, and islanding protection further enhance the reliability and versatility of energy storage power stations.



## Enterprise power storage equipment occupies an area of



### [Energy Storage Power Station Project Land Area: What You ...](#)

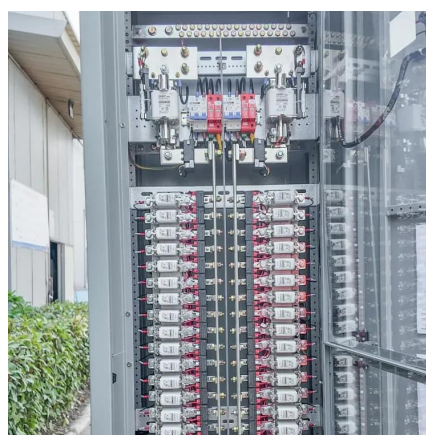
As battery densities improve by 8-12% annually, today's energy storage project land needs might shrink faster than polar ice caps. But for now, smart planning remains crucial.

[Request Quote](#)

### [Energy storage for electricity generation](#)

The United States has one operating compressed-air energy storage (CAES) system: the PowerSouth Energy Cooperative facility in Alabama, which has 100 MW power capacity and ...

[Request Quote](#)



### **What is energy storage?**

Energy storage is the capturing and holding of energy in reserve for later use. Energy storage solutions include pumped-hydro storage, batteries, flywheels and compressed ...

[Request Quote](#)

### [Energy storage power station land use standards](#)

Therefore, power station equipped with energy storage has become a feasible solution to address the issue of power curtailment and alleviate the tension in electricity supply



[Request Quote](#)



## Energy Storage Systems

Energy storage systems are crucial for improving the flexibility, efficiency, and reliability of the electrical grid. They are crucial to integrating renewable energy sources, meeting peak ...

[Request Quote](#)



## Electricity Storage , US EPA

The guide covers the construction, operation, management, and functionalities of these power stations, including their contribution to grid stability, peak shaving, load shifting, ...

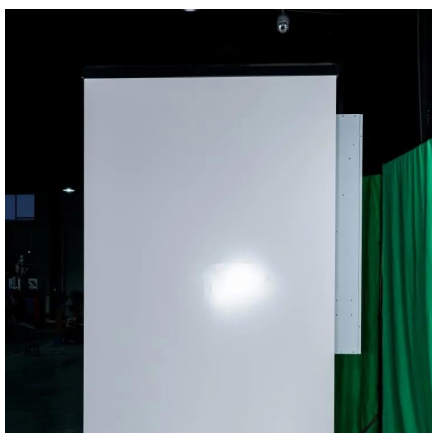
[Request Quote](#)



## U.S. Grid Energy Storage Factsheet

Of the 1,643 operational energy storage projects worldwide, 49% are located in the U.S., with another 131 projects under construction. 10 California leads U.S. capacity with 15.5 GW, ...

[Request Quote](#)



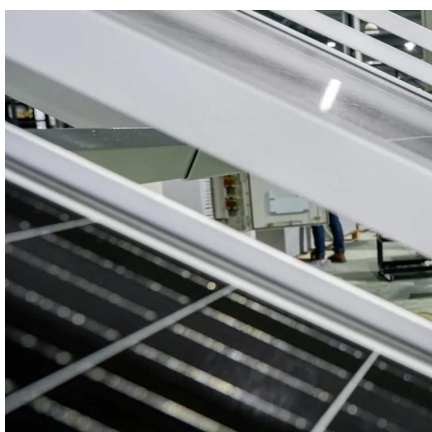
[How much land does a pumped storage](#)



## [power ...](#)

A pumped storage power station typically occupies a substantial amount of land, primarily due to the requirements for reservoir ...

[Request Quote](#)



## [Battery storage power station - a comprehensive guide](#)

The guide covers the construction, operation, management, and functionalities of these power stations, including their contribution to grid stability, peak shaving, load shifting, and backup ...

[Request Quote](#)

## **Electricity Storage , US EPA**

Depending on the extent to which it is deployed, electricity storage could help the utility grid operate more efficiently, reduce the likelihood of brownouts during peak demand, ...

[Request Quote](#)



## **Commercial and Industrial Energy Storage: A Complete Guide ...**

With a typical capacity ranging from 50kWh to 10MWh, its core value lies in helping enterprises reduce electricity costs and ensure continuous power supply for ...

[Request Quote](#)

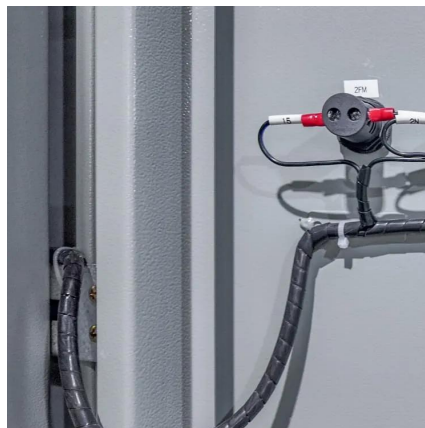
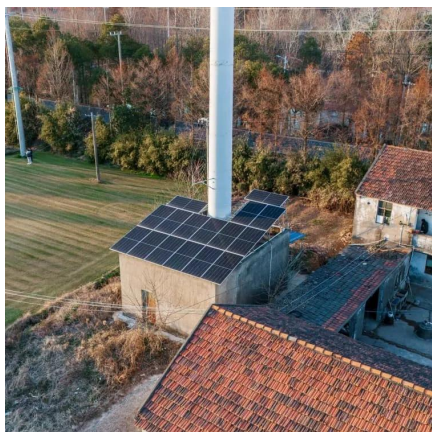
## [How much land does a pumped storage](#)



## [power station occupy?](#)

A pumped storage power station typically occupies a substantial amount of land, primarily due to the requirements for reservoir creation, access roads, and ancillary infrastructure.

[Request Quote](#)



## **What is energy storage?**

Energy storage is the capturing and holding of energy in reserve for later use. Energy storage solutions include pumped-hydro ...

[Request Quote](#)



## Contact Us

---

For catalog requests, pricing, or partnerships, please visit:

<https://www.energyinnovationday.pl>

Phone: +48 22 335 1273

Email: [info@energyinnovationday.pl](mailto:info@energyinnovationday.pl)

Scan the QR code to contact us via WhatsApp.

